

**NEW**

# The Practice Room

Learn to Sight Sing.

## Dictation Workbook

### Templates for: Rhythmic Dictation Melodic Dictation

The image displays two musical exercises in 4/4 time, each consisting of a treble and bass staff. The first exercise is marked *mp* and contains four measures. The second exercise is marked *mf* and contains four measures. Each measure is numbered from 1 to 4.

**Exercise 1 (*mp*):**

- Measure 1: Treble clef, G4 quarter, A4 quarter, B4 quarter, C5 quarter.
- Measure 2: Treble clef, D5 quarter, C5 quarter, B4 quarter, A4 quarter.
- Measure 3: Treble clef, G4 quarter, F4 quarter, E4 quarter, D4 quarter.
- Measure 4: Treble clef, C4 quarter, B3 quarter, A3 quarter, G3 quarter.

**Exercise 2 (*mf*):**

- Measure 5: Treble clef, G4 quarter, eighth-note triplet (A4, B4, C5), D5 quarter.
- Measure 6: Treble clef, E5 quarter, D5 quarter, C5 quarter, B4 quarter.
- Measure 7: Treble clef, A4 quarter, G4 quarter, F4 quarter, E4 quarter.
- Measure 8: Treble clef, D4 quarter, C4 quarter, B3 quarter, A3 quarter.

# Dictation Template

## Rhythmic Dictation

































































































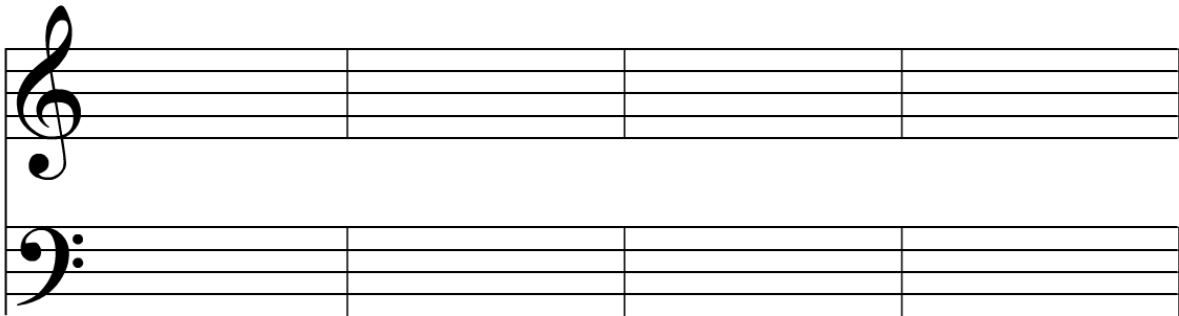


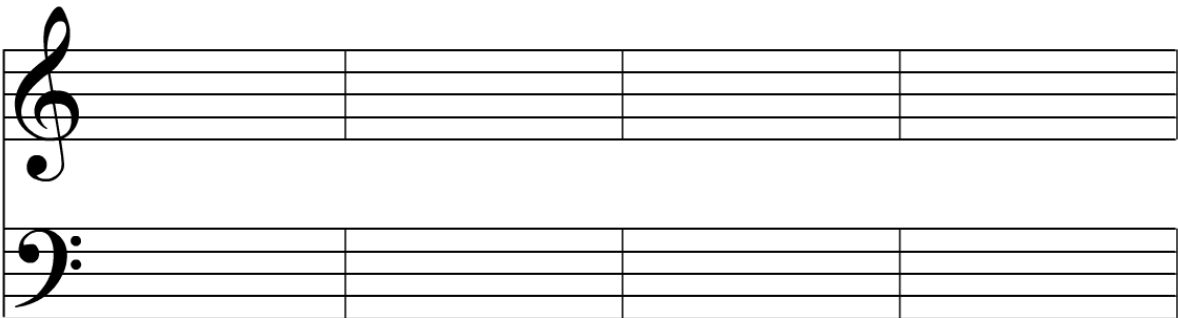
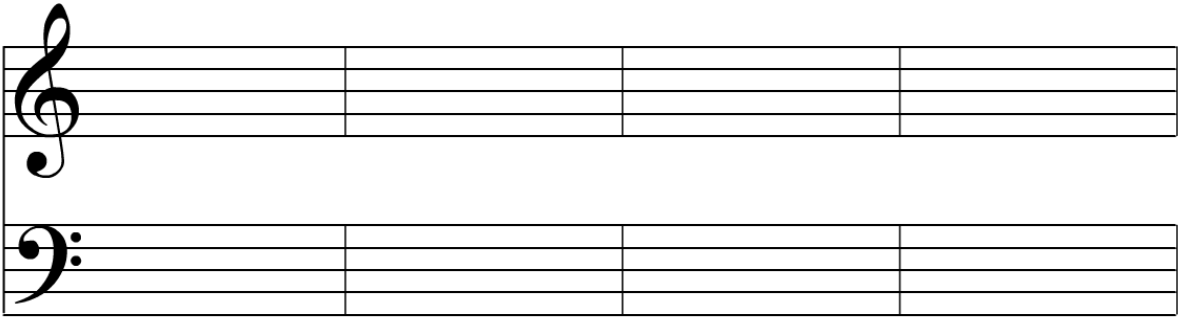
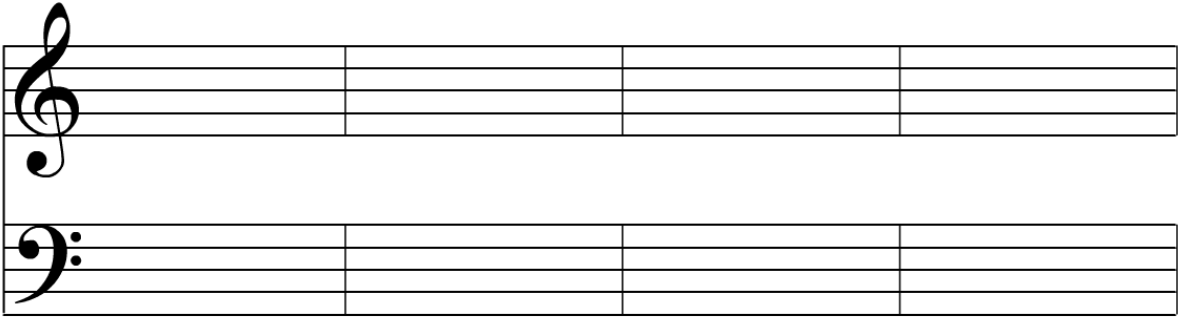
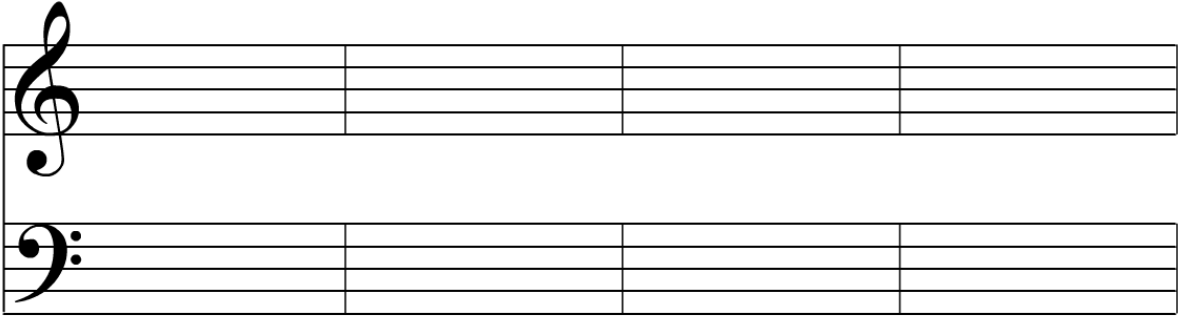


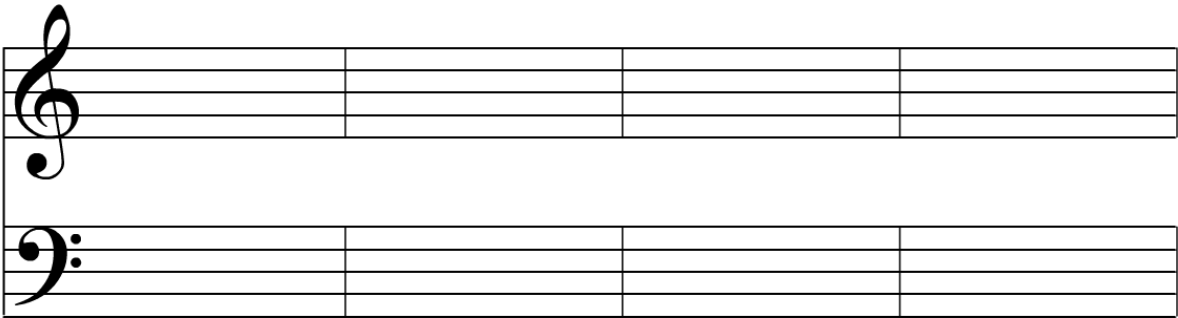
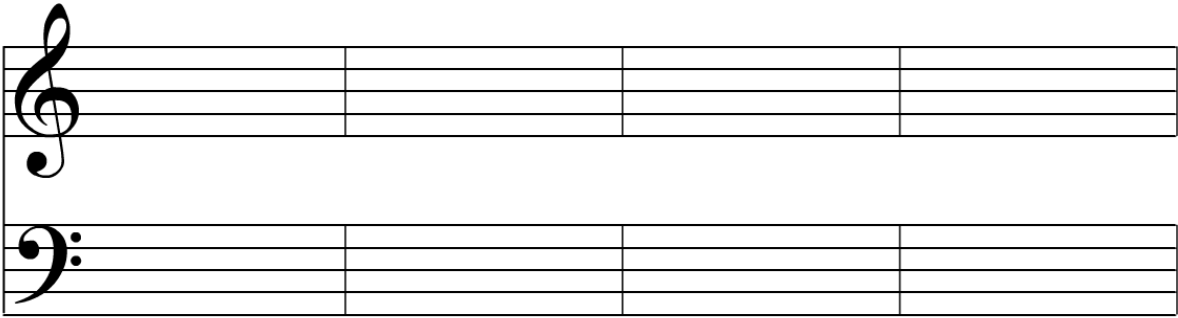
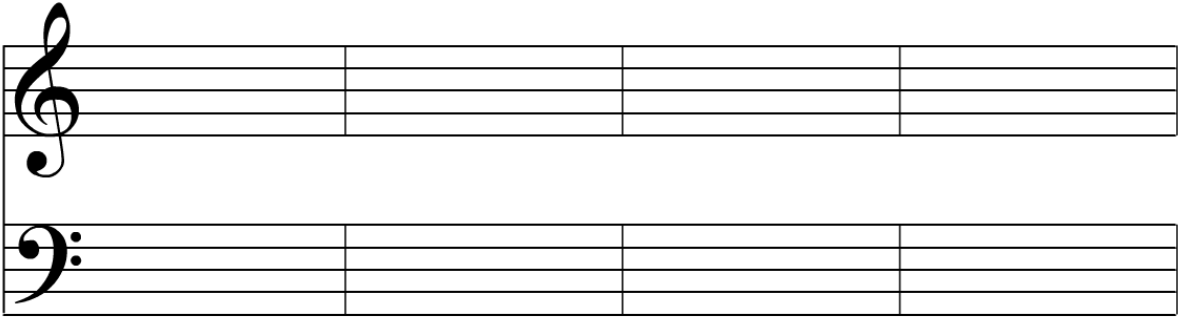
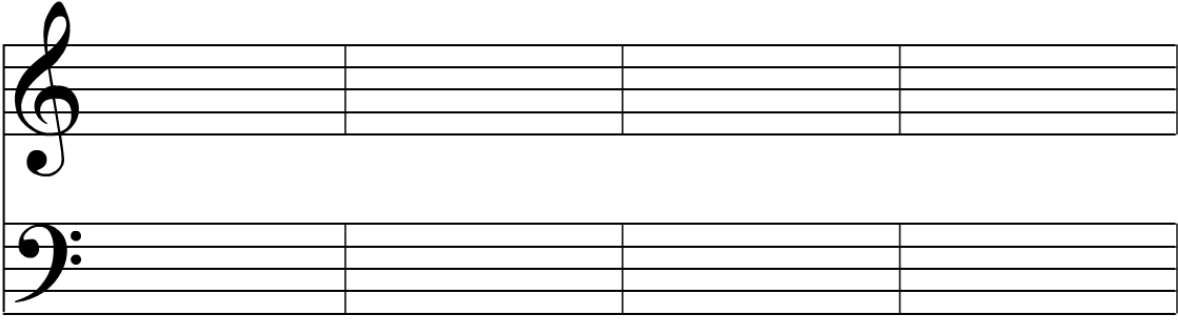


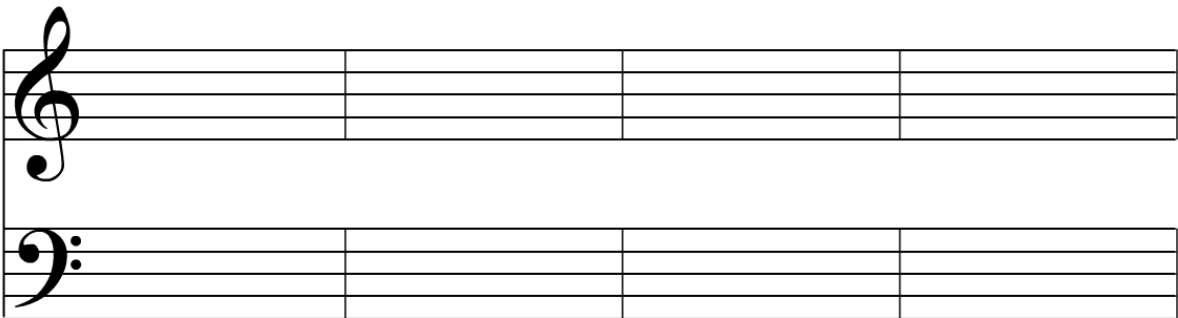
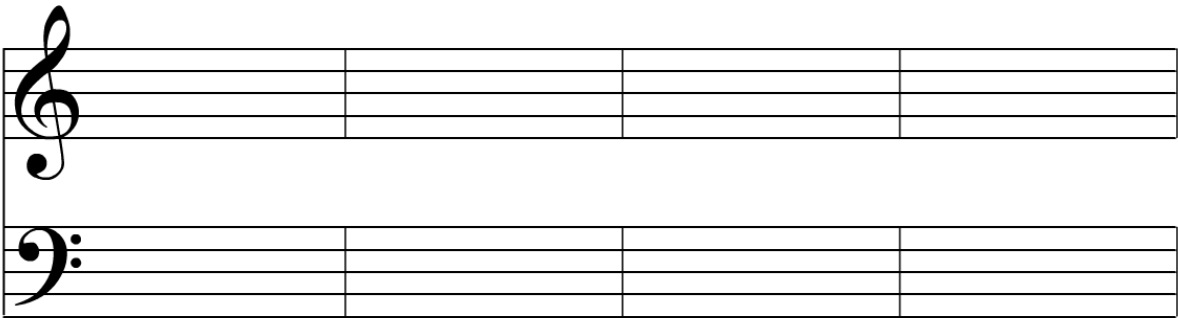
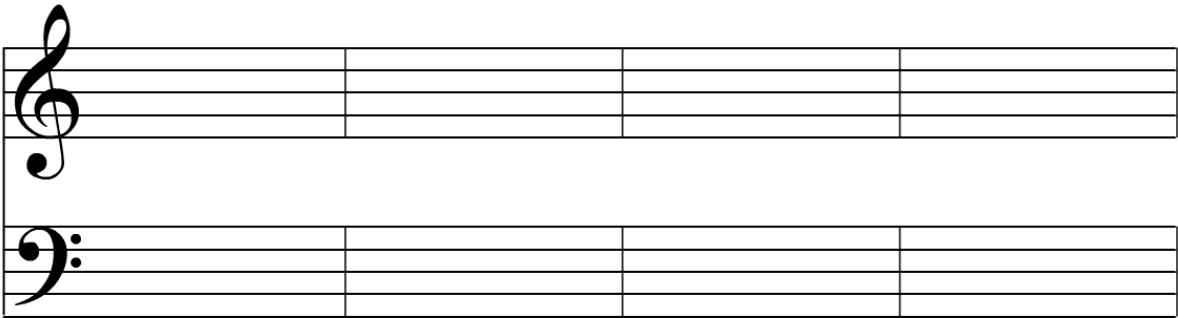
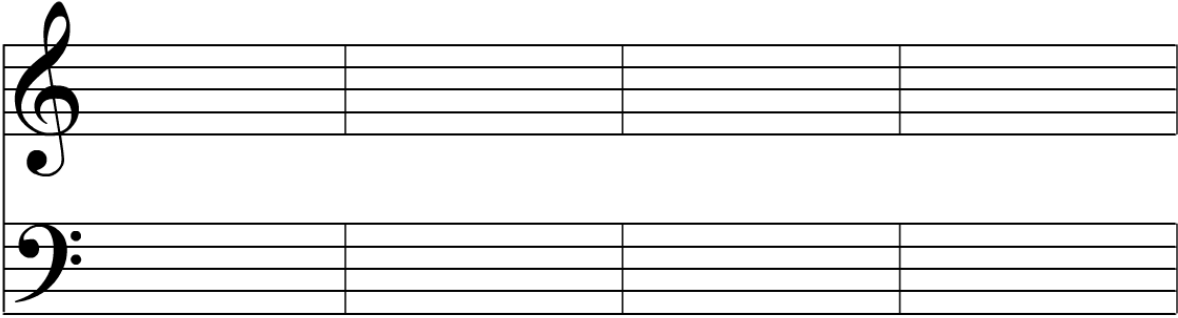

# Dictation Template

## Single Melody Dictation

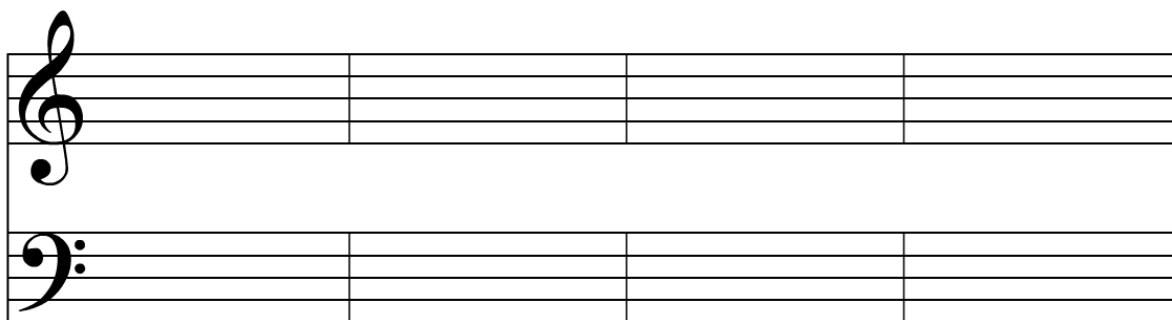
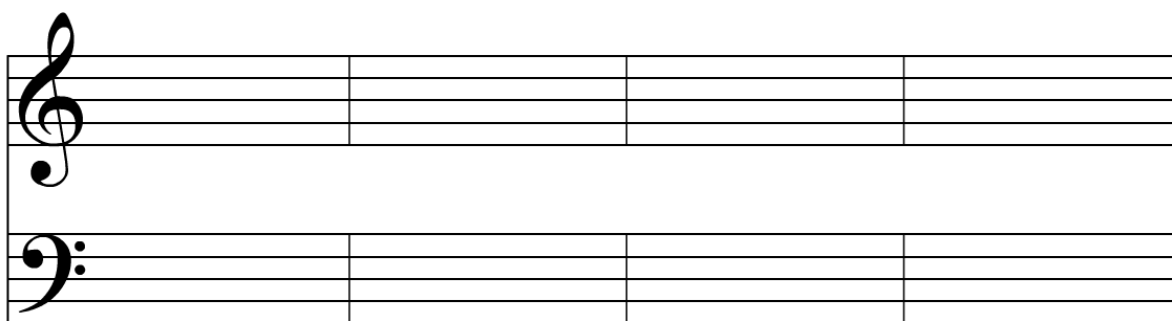
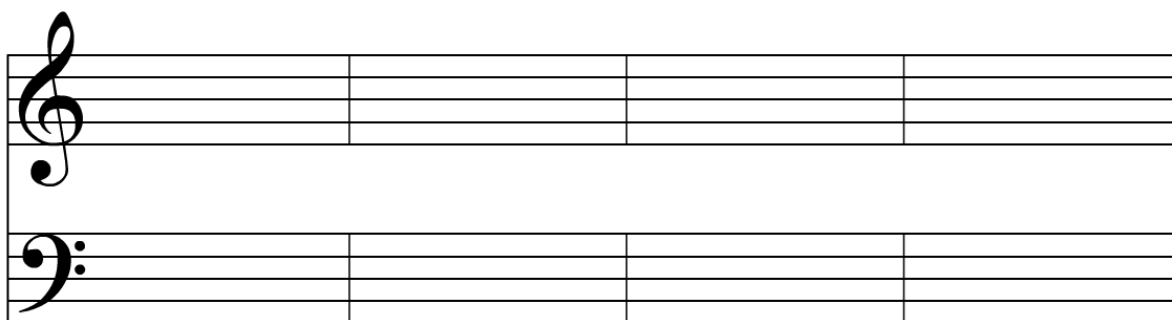
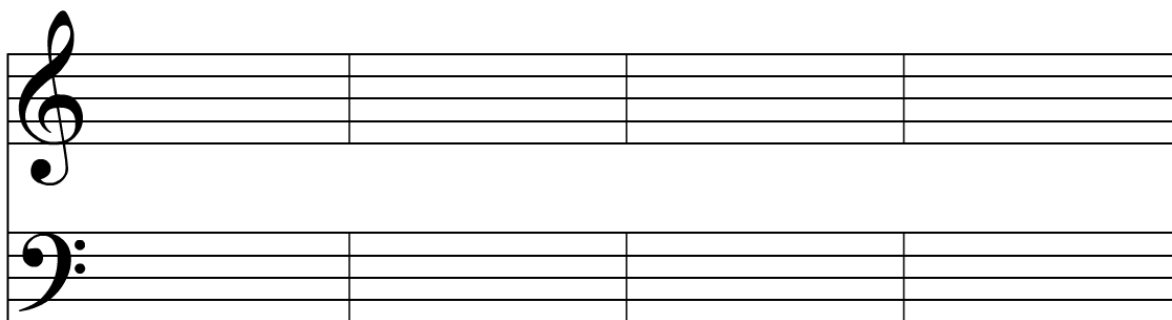


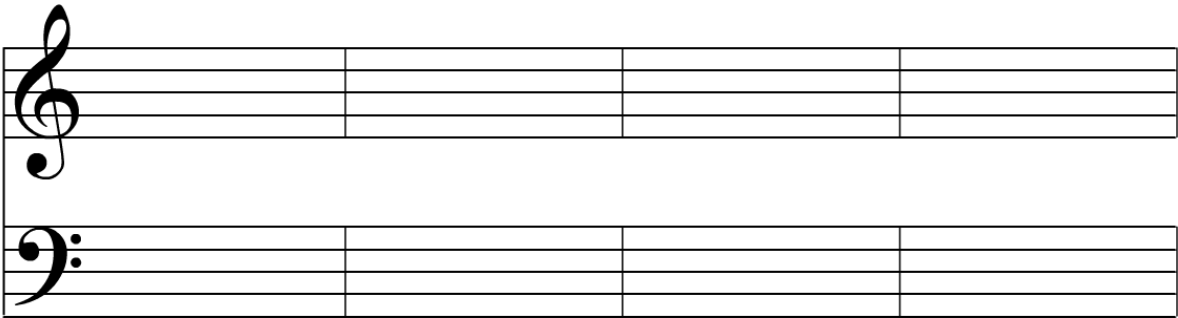
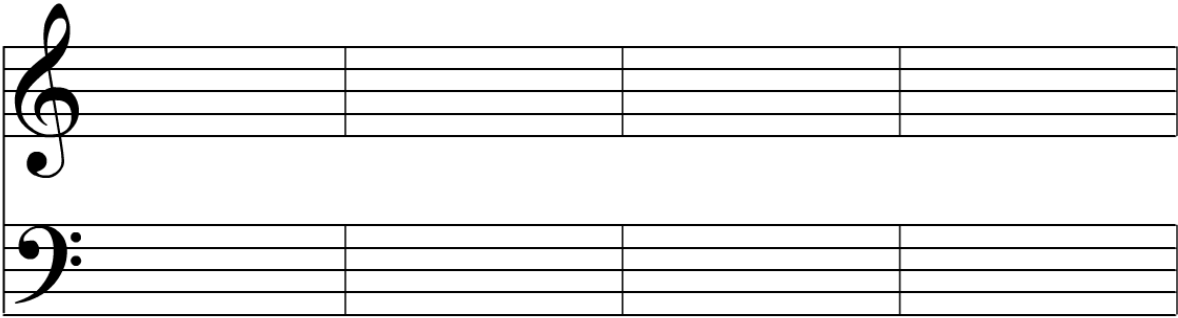
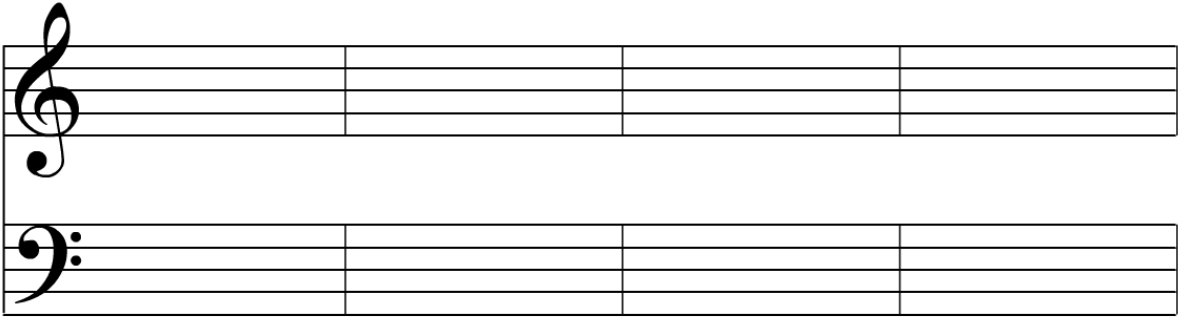
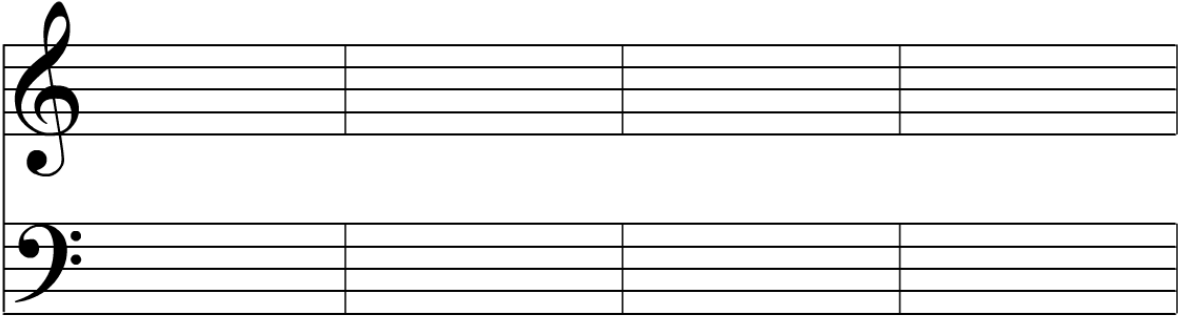


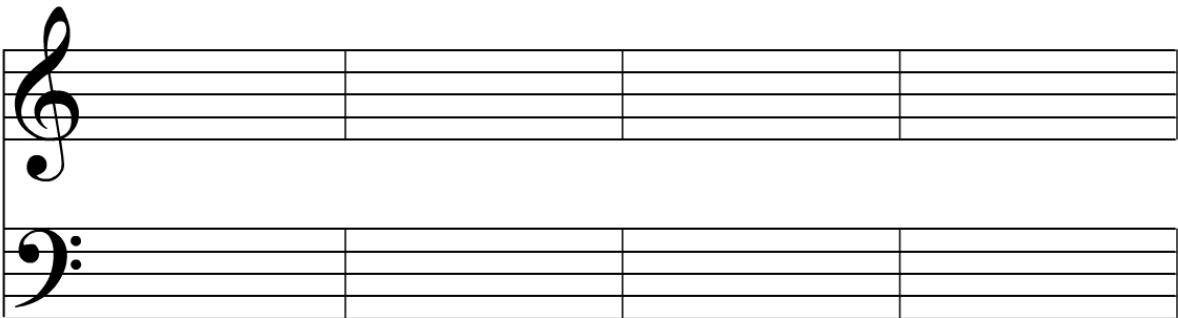
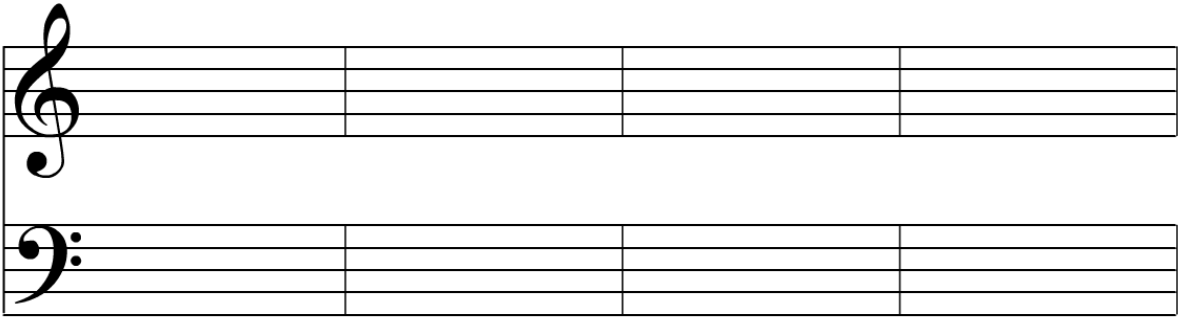
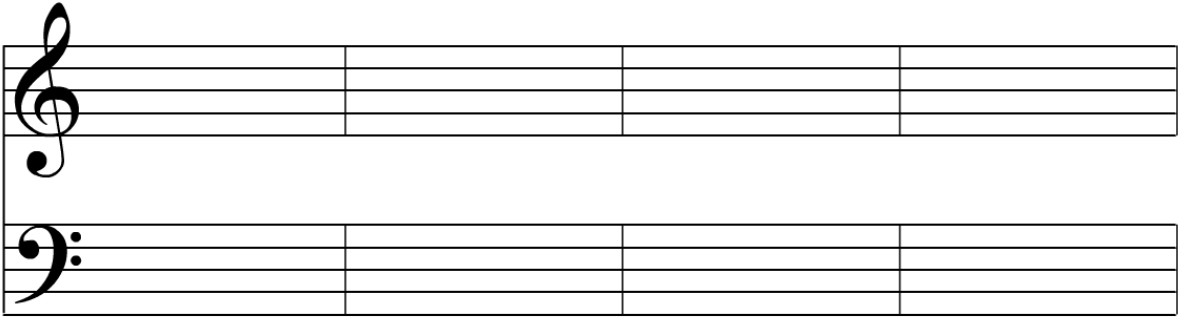
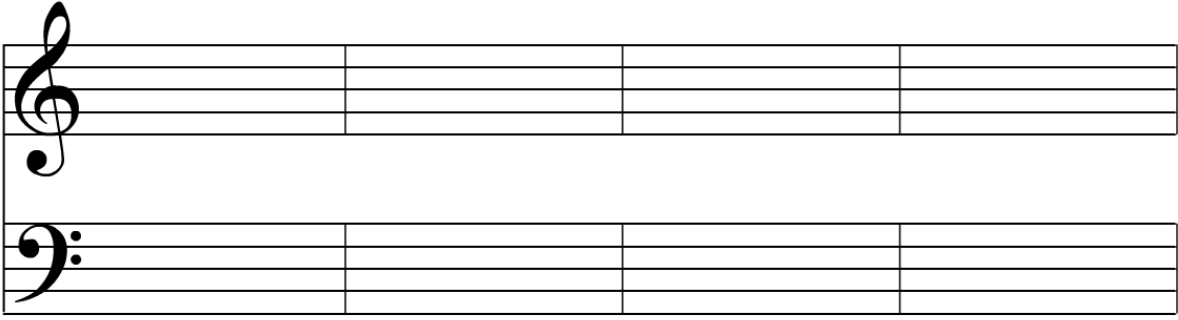


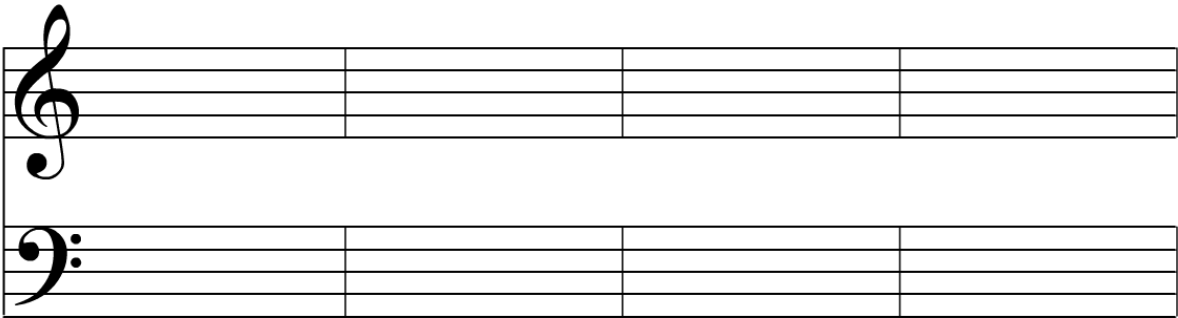
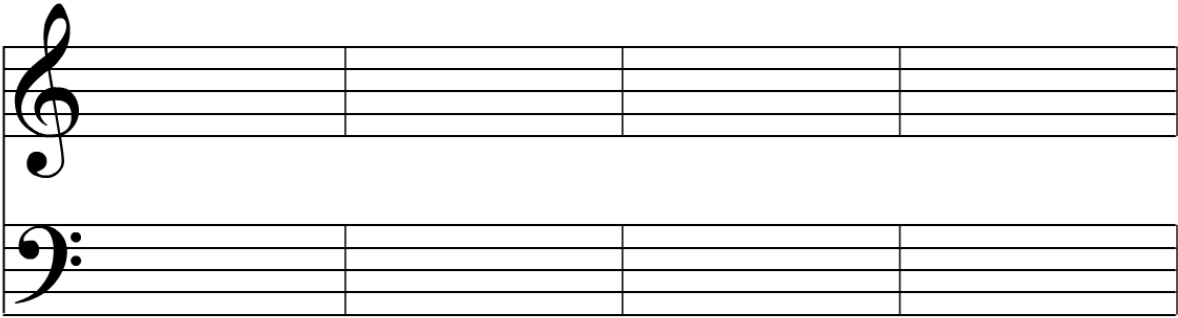
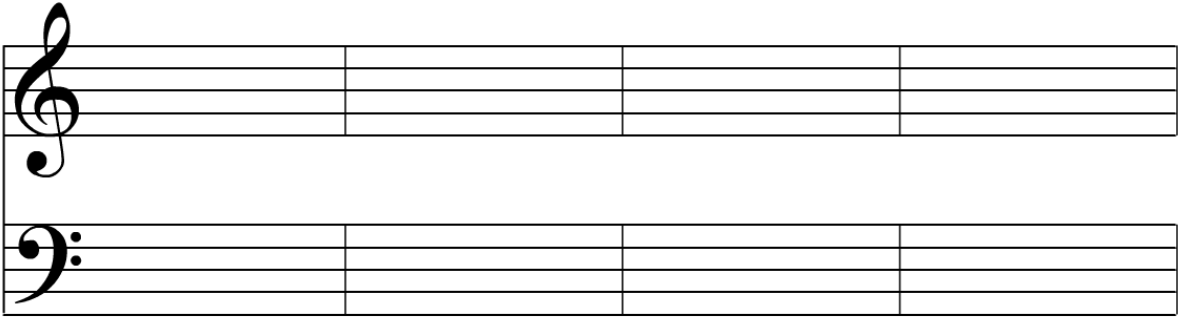
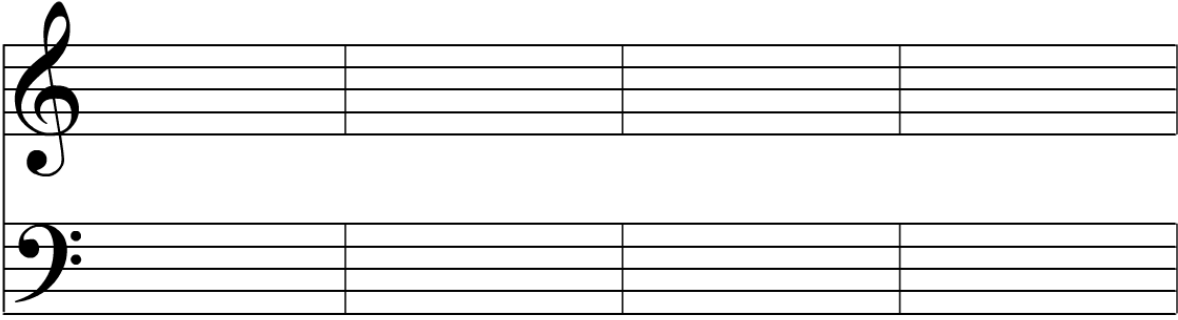


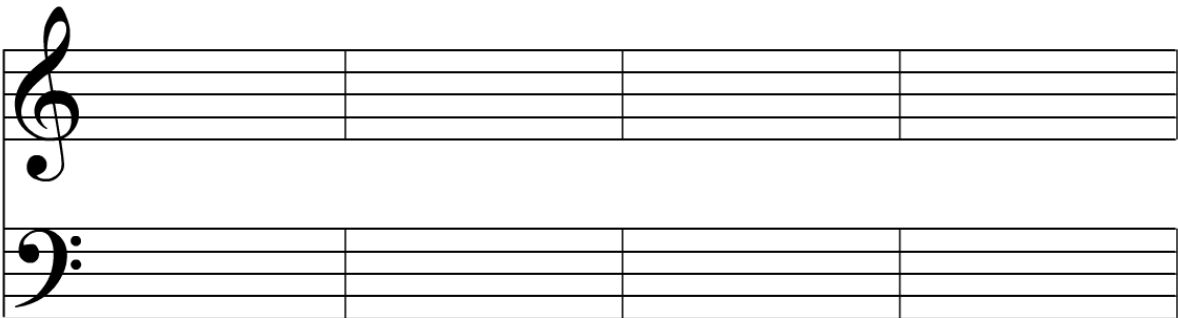
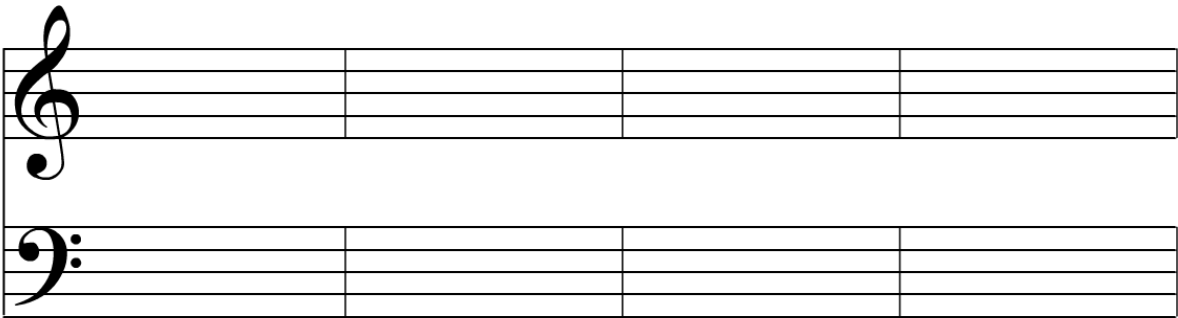
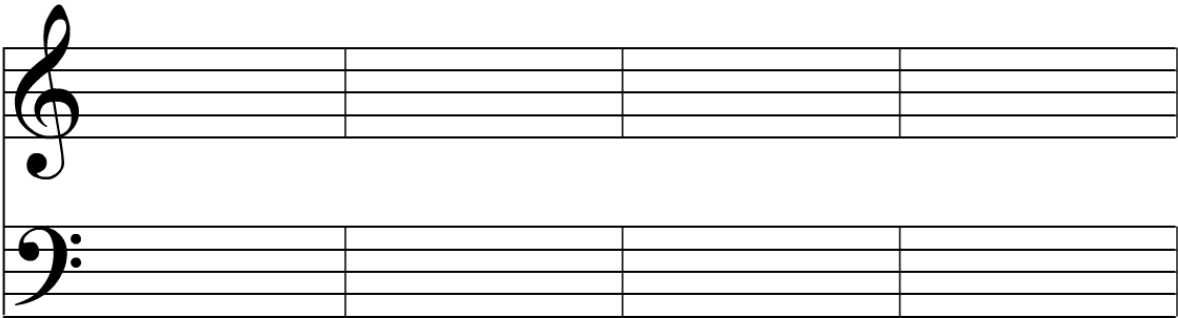
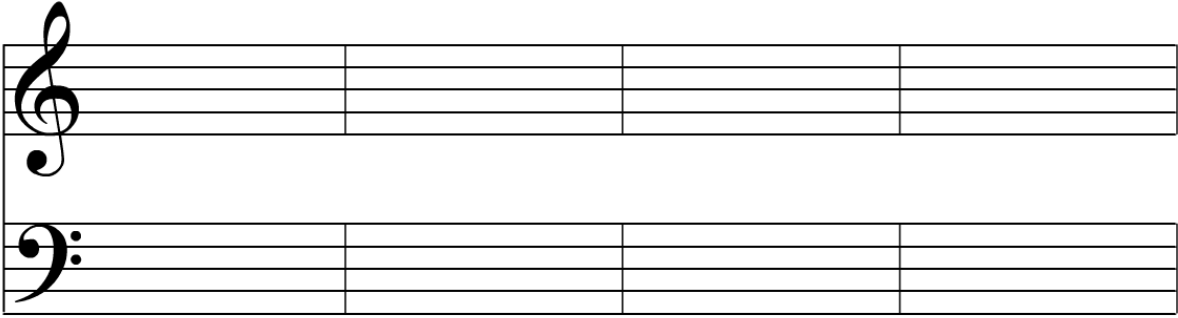


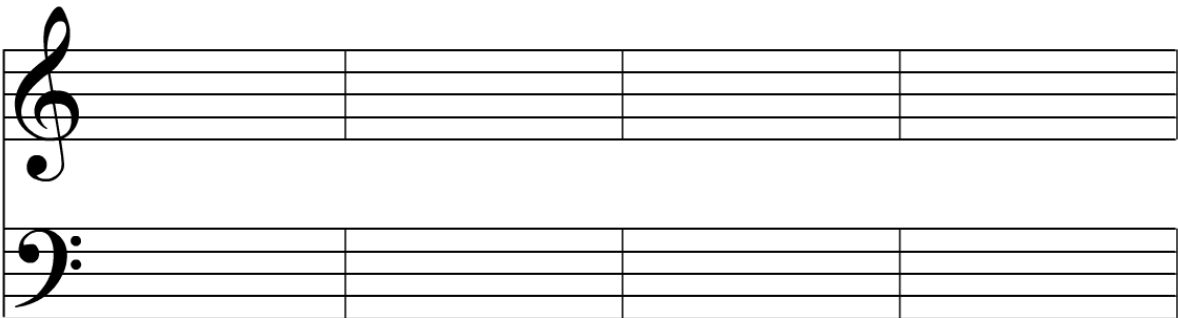
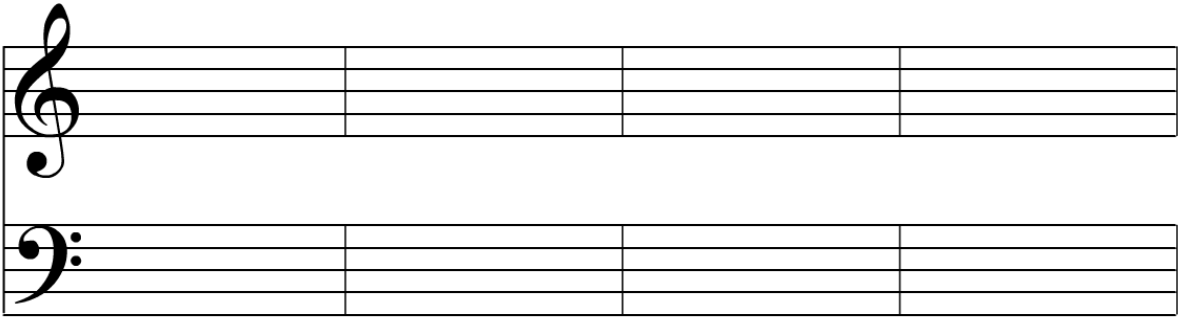
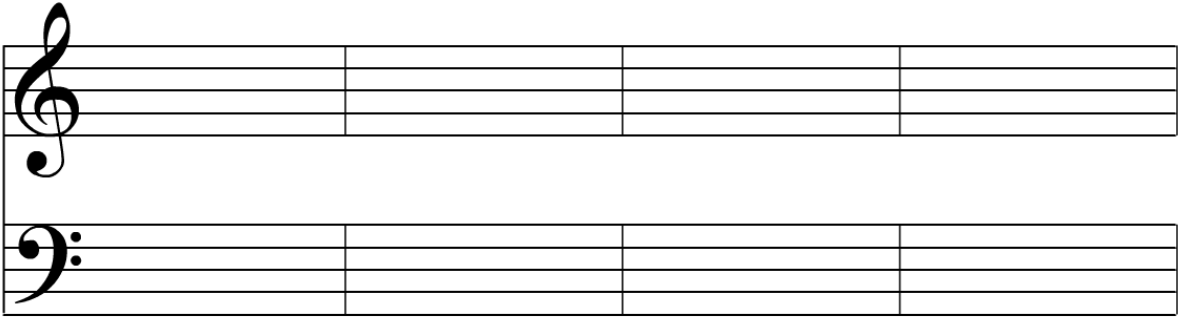
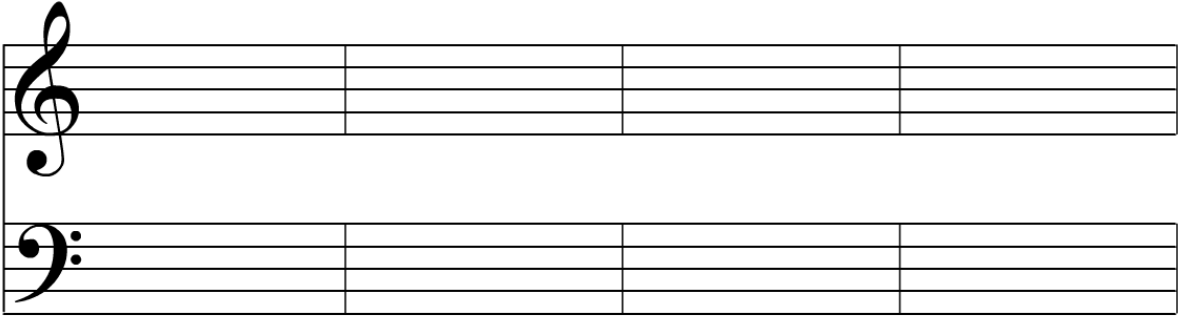


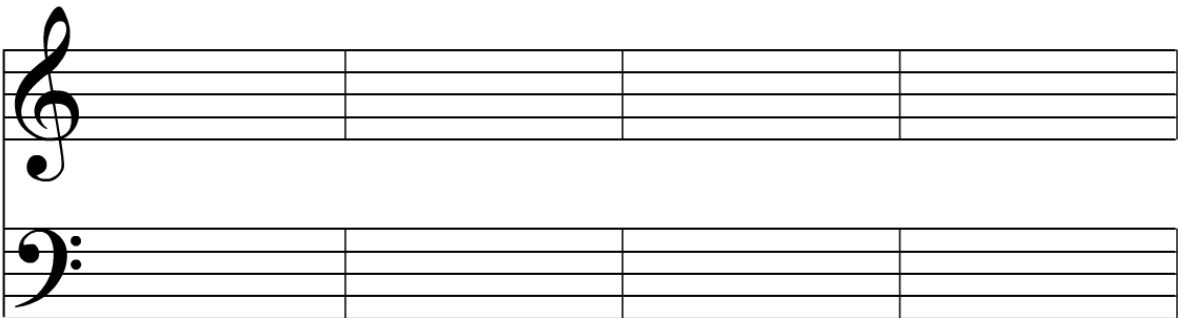
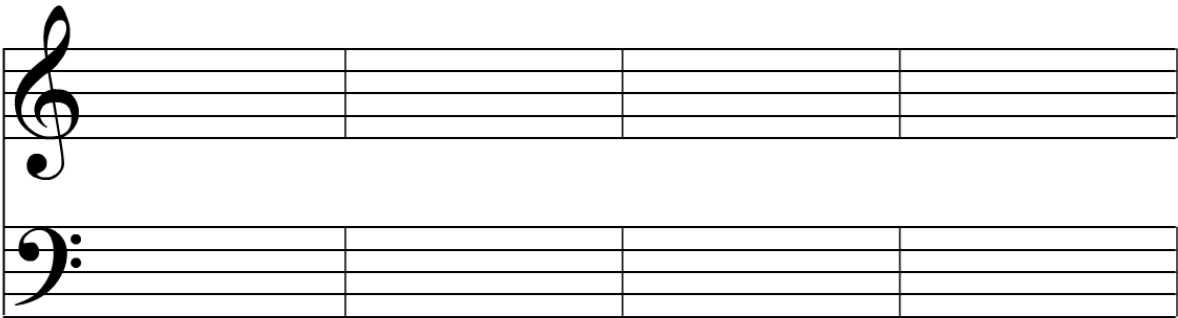
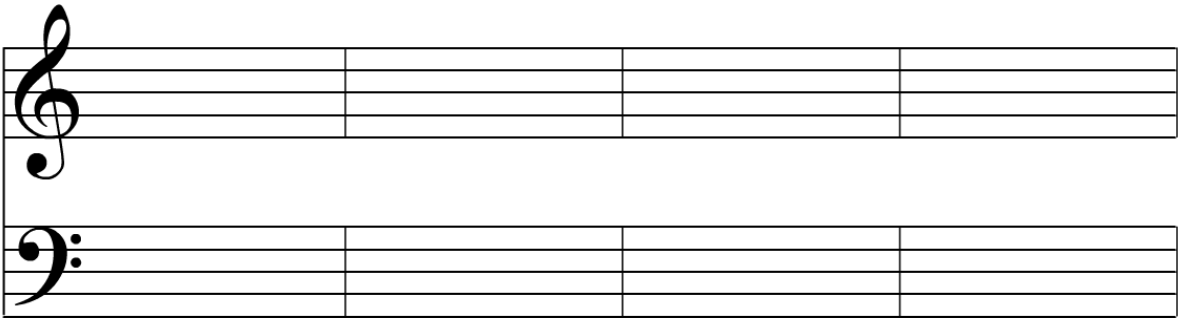
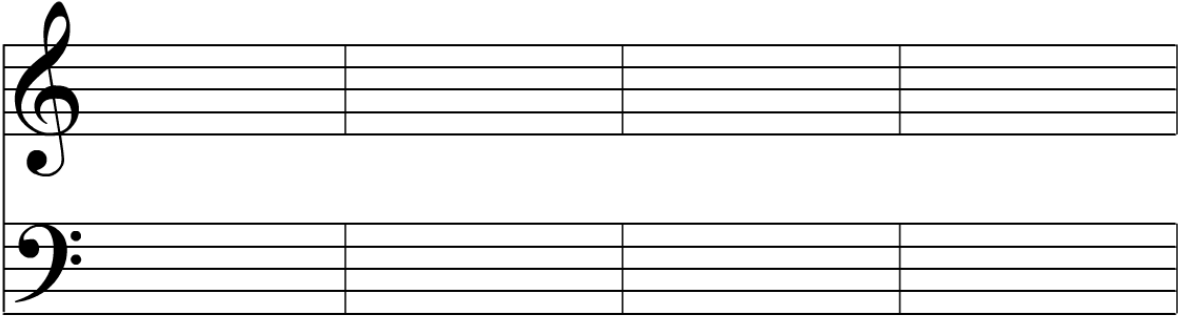






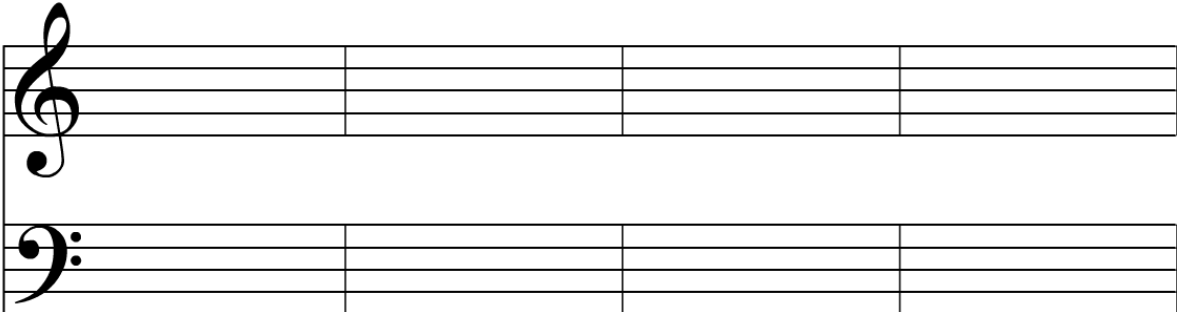




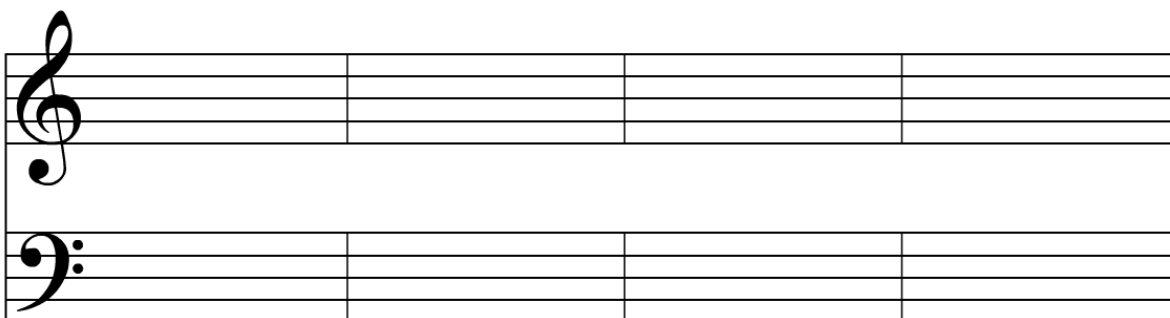
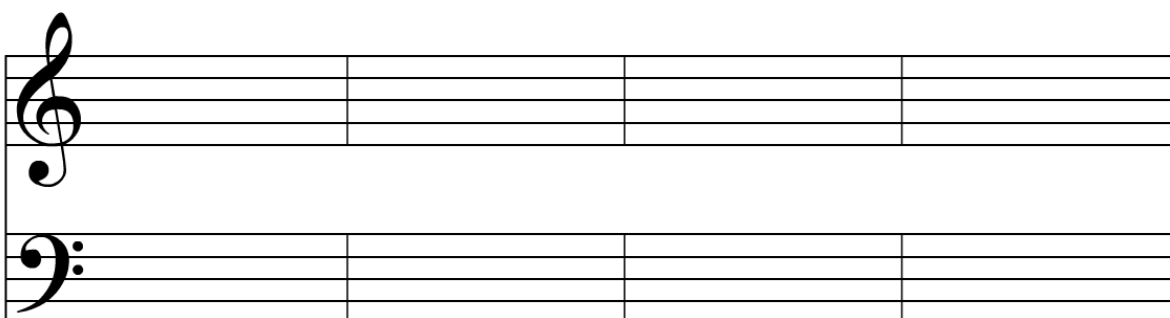
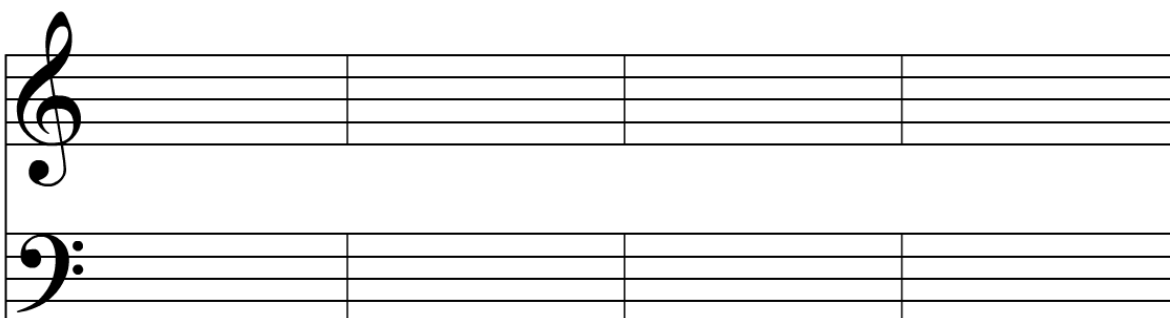
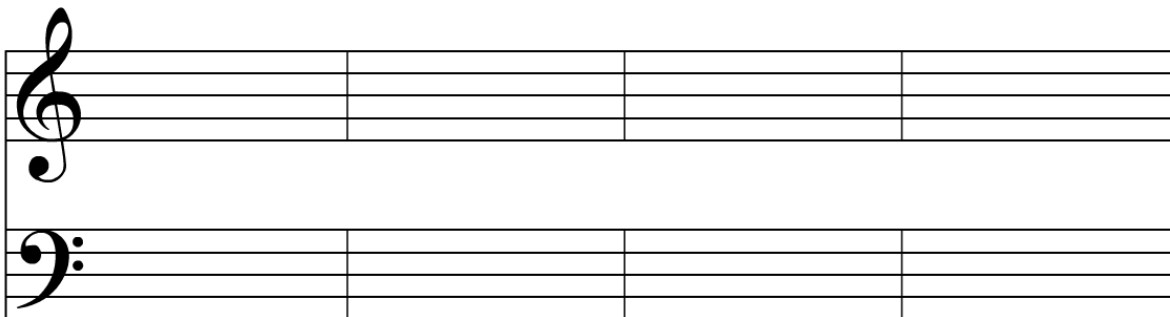


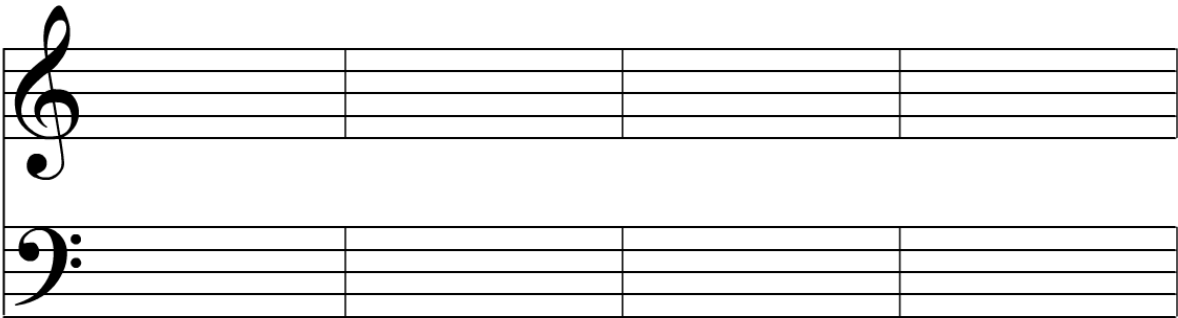
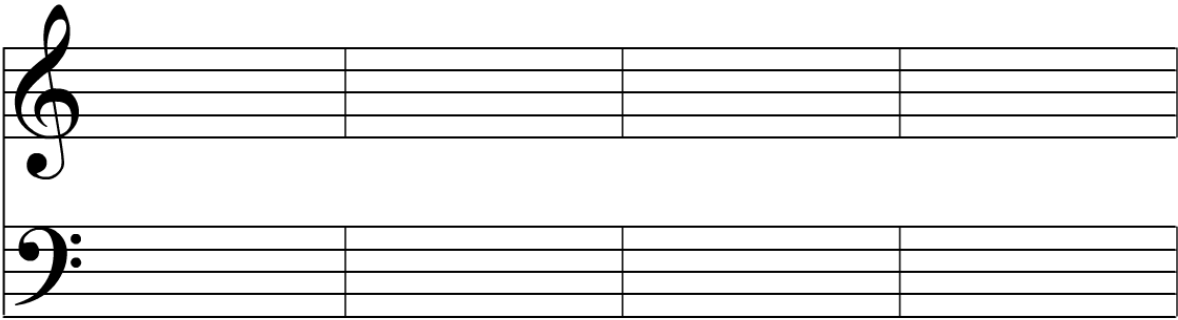
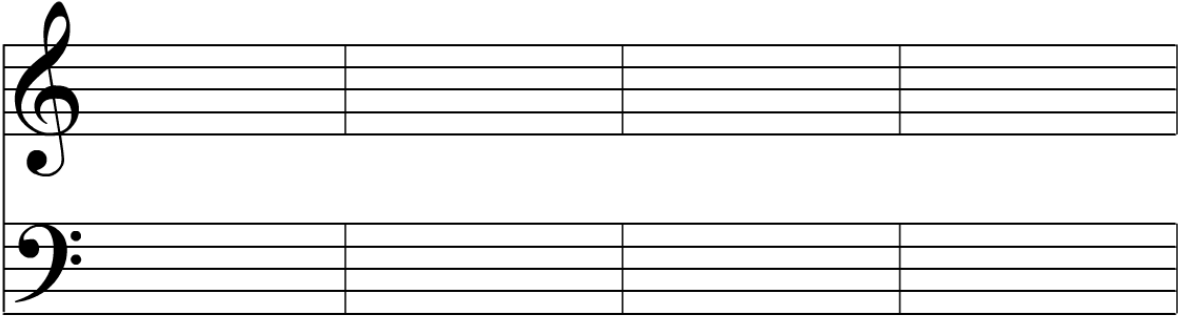
# Dictation Template

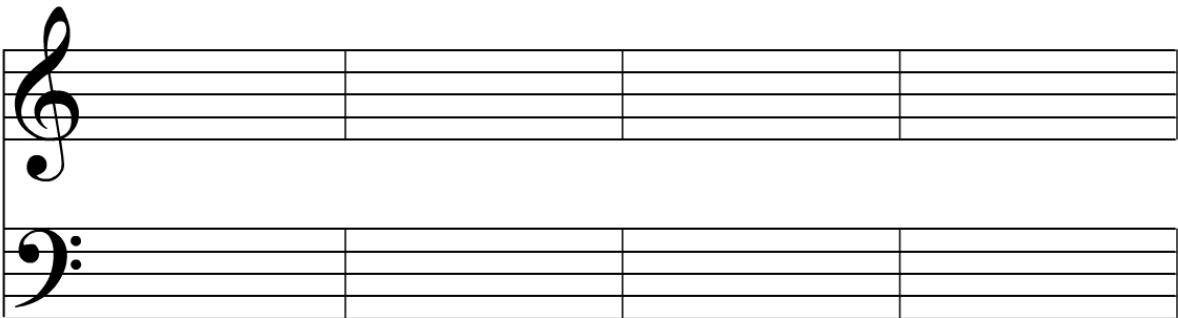
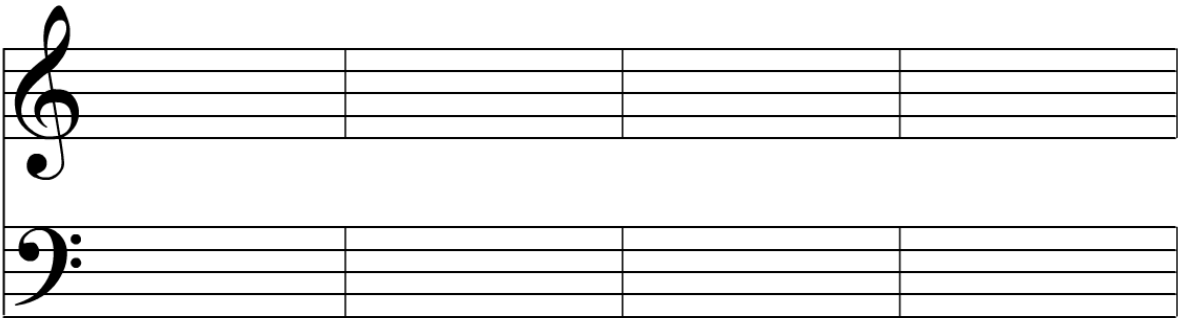
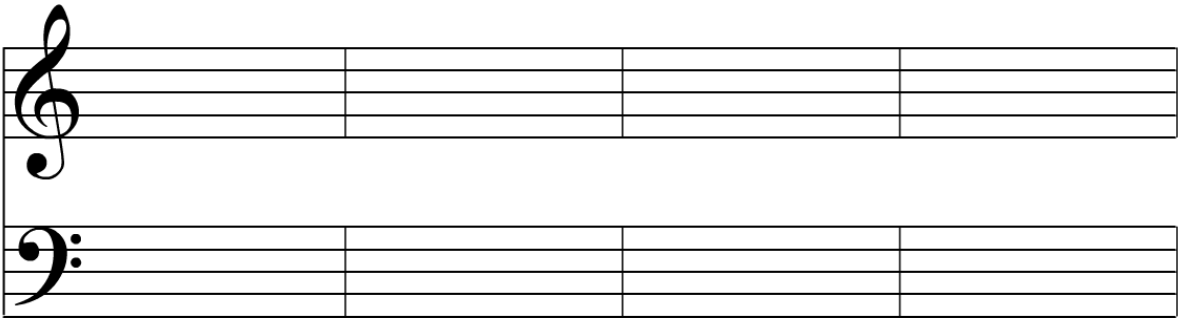
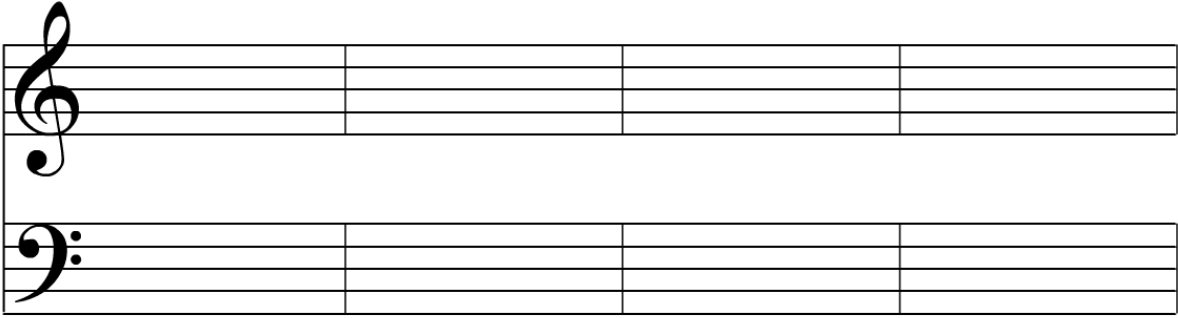
## Two Part Dictation

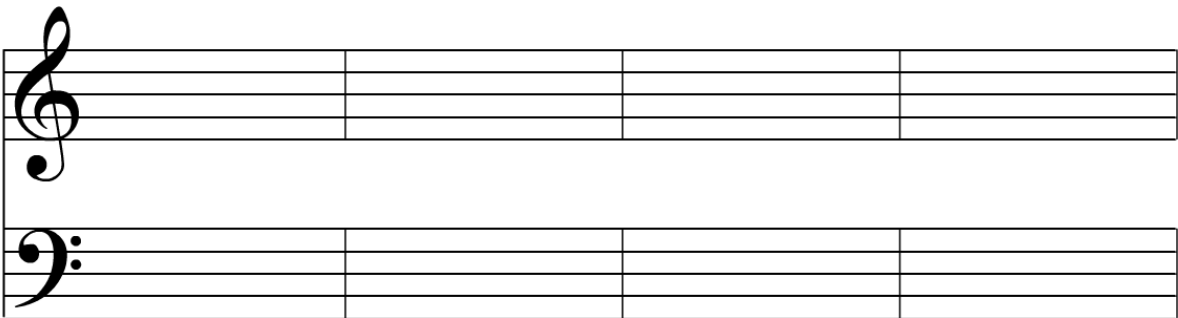
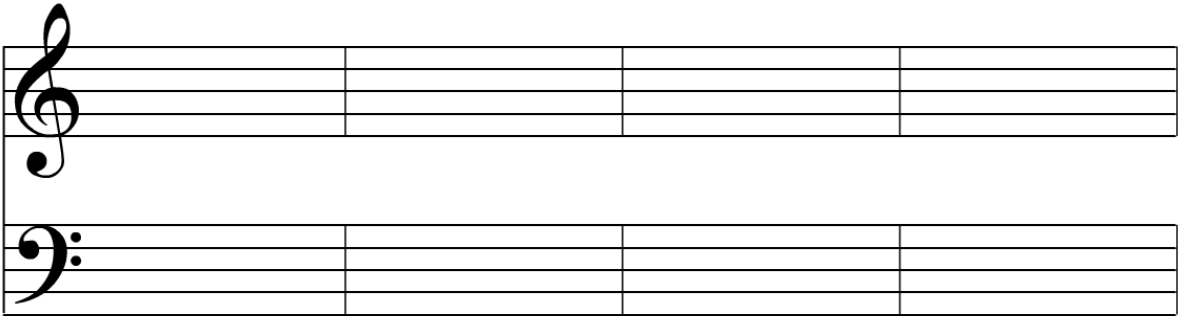
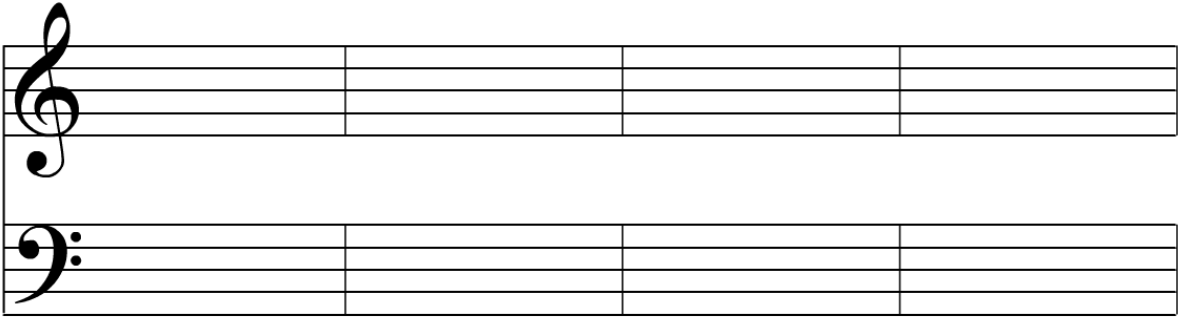
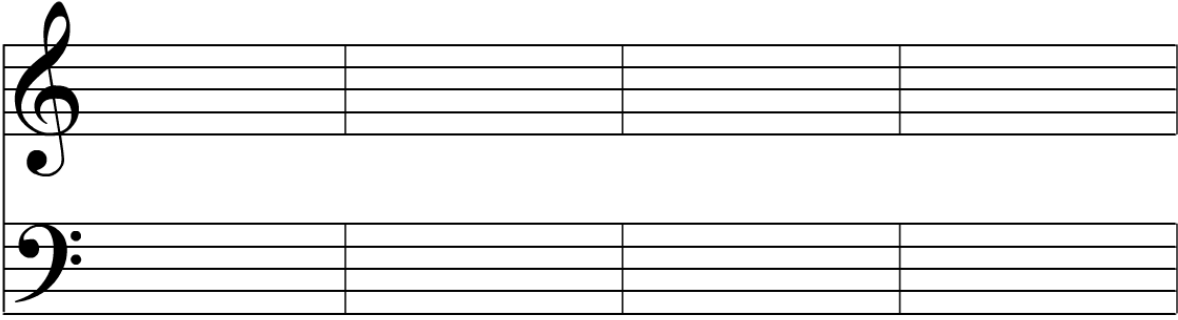


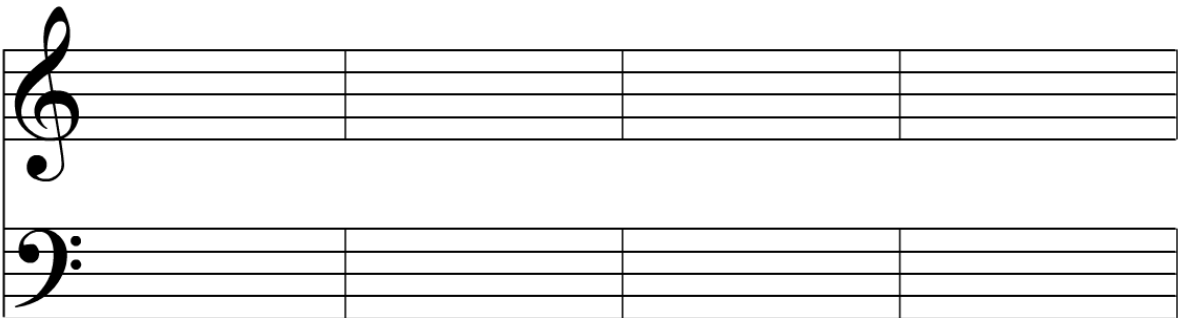
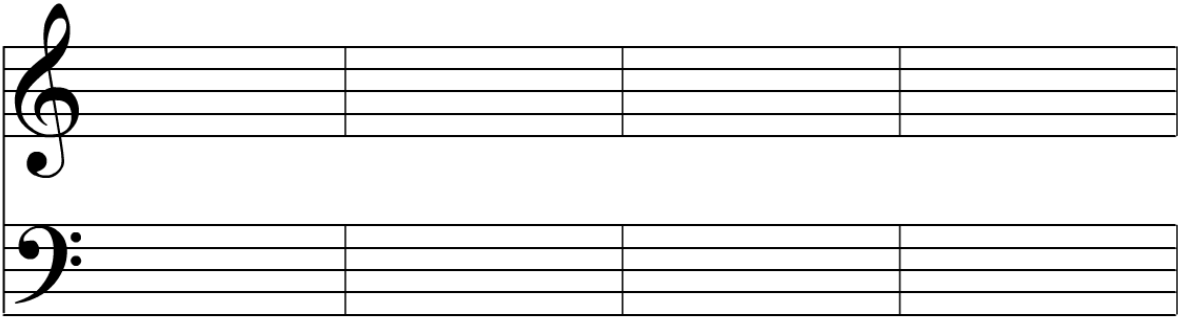
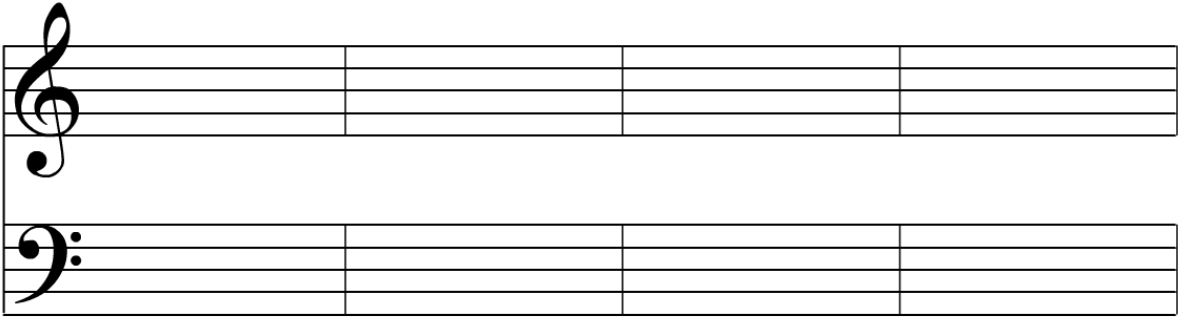
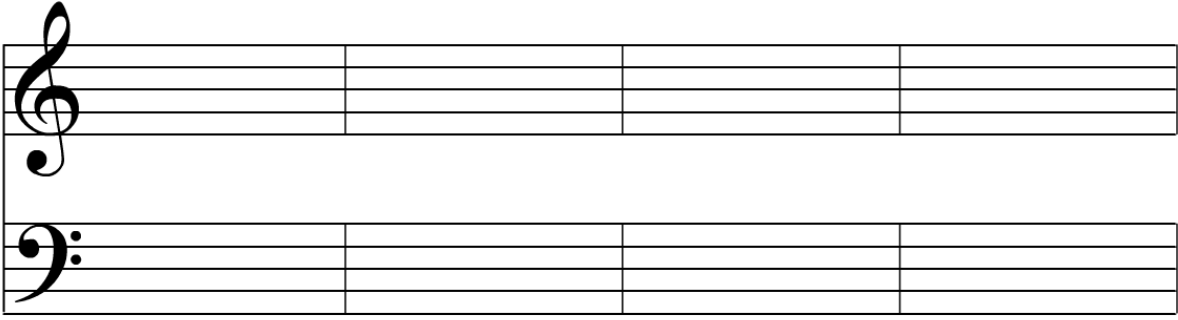


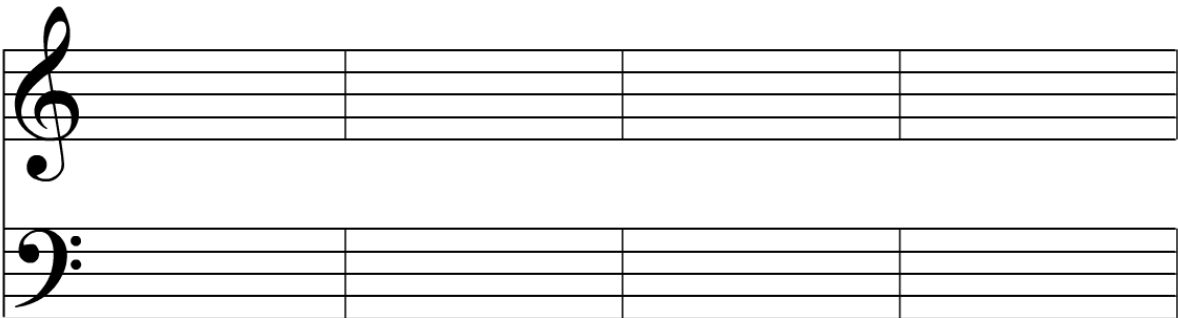
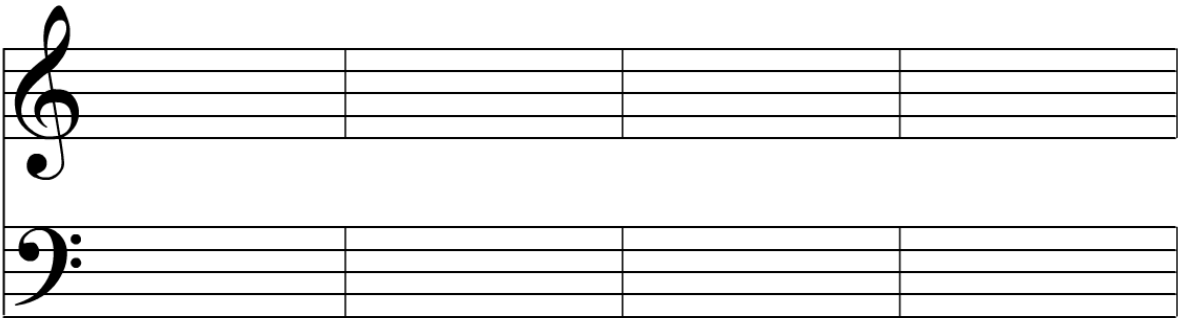
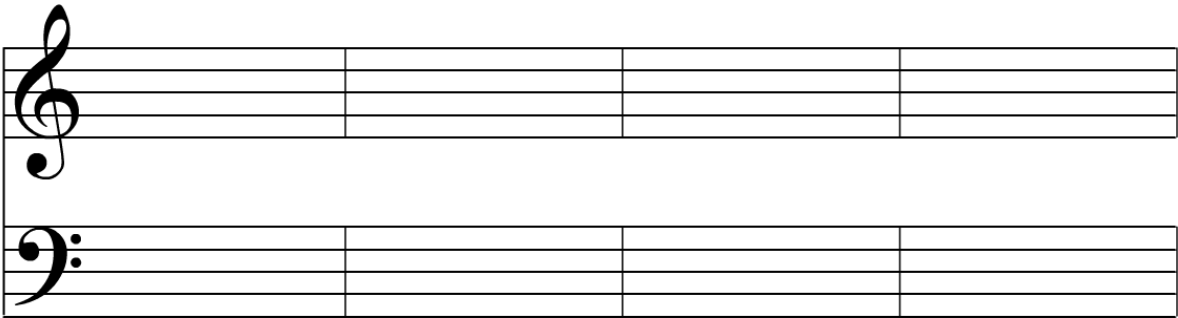
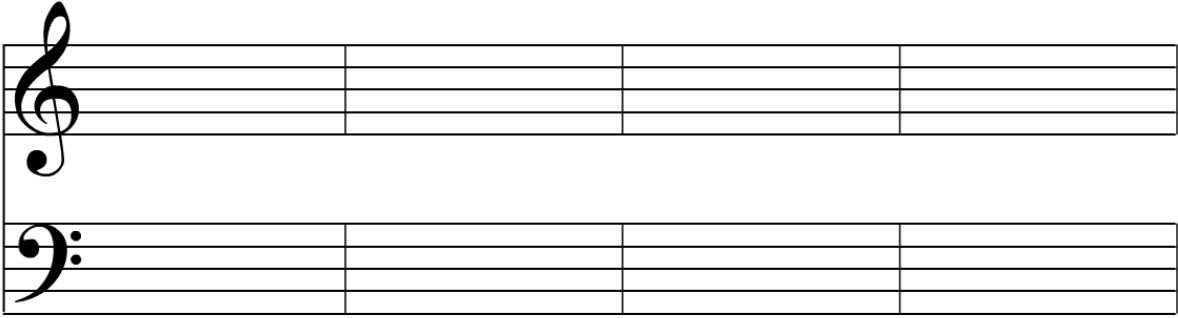


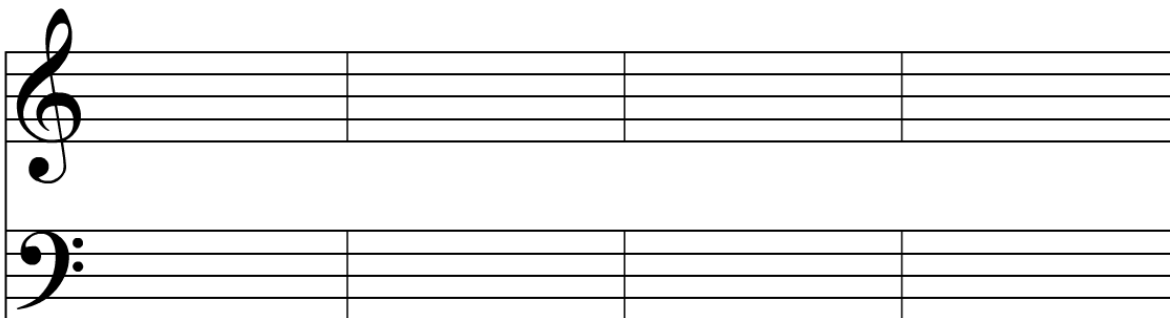
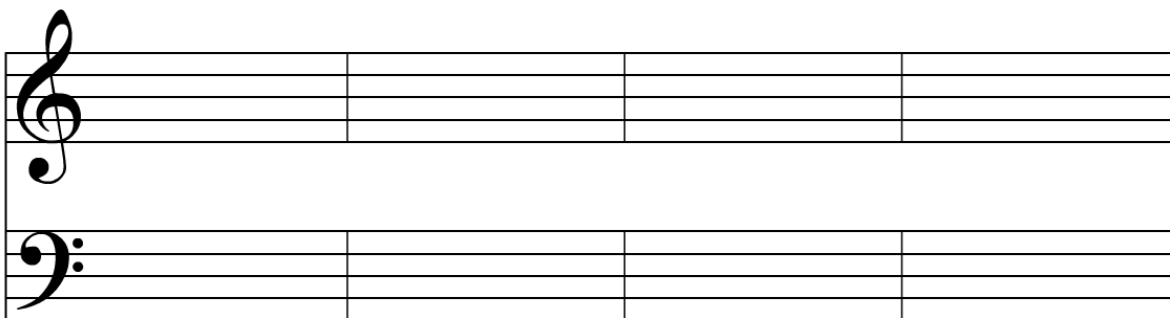
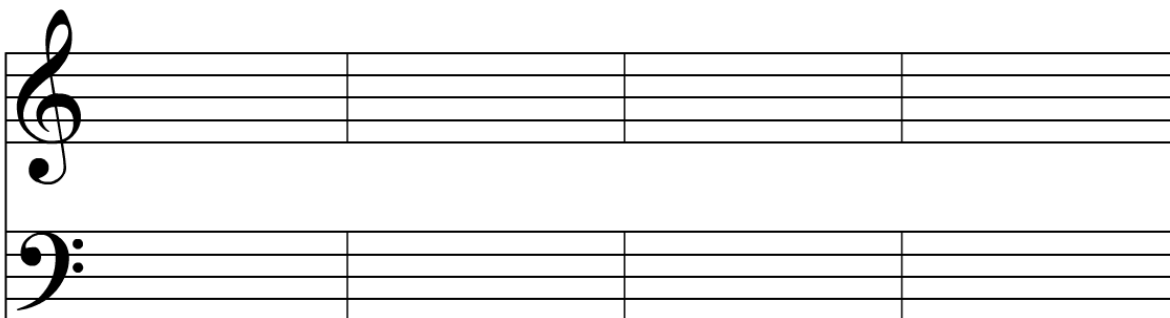
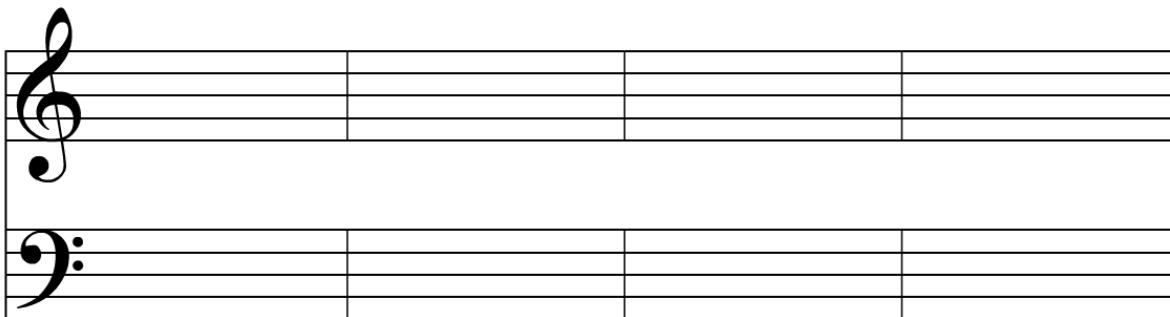


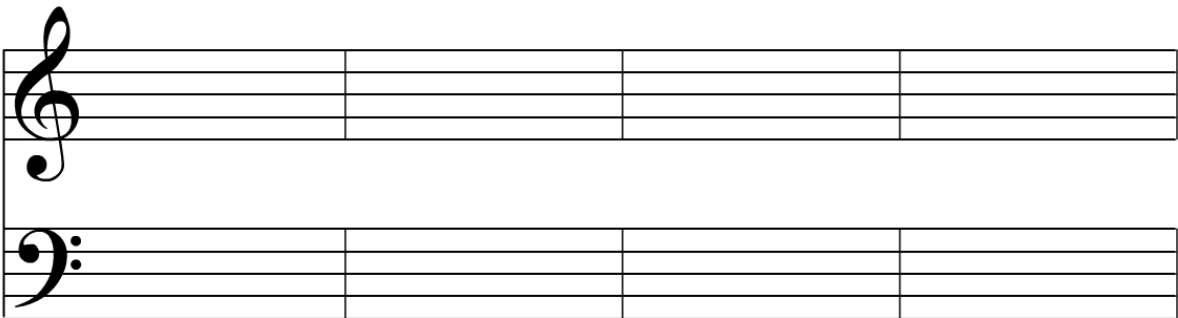
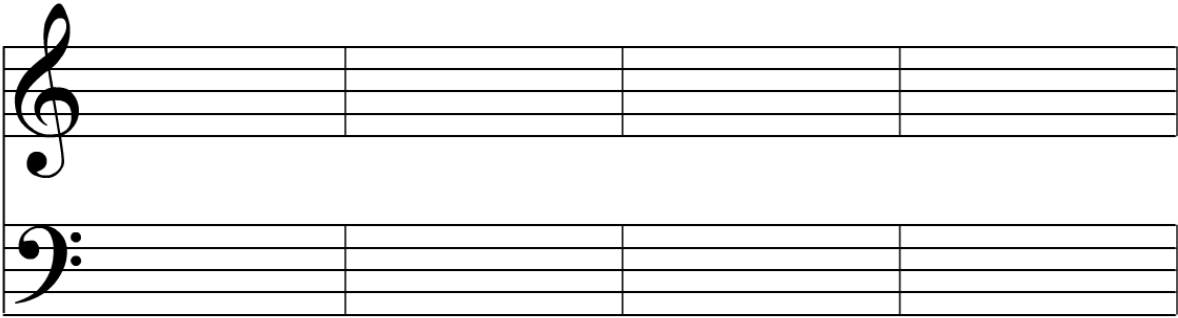
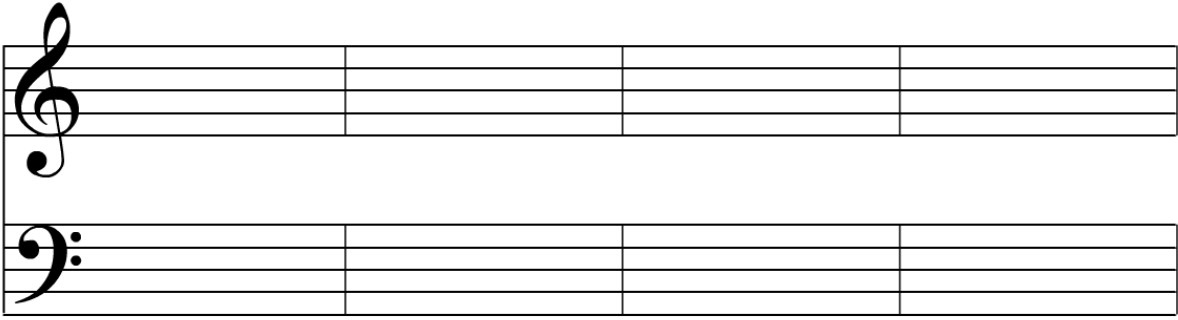
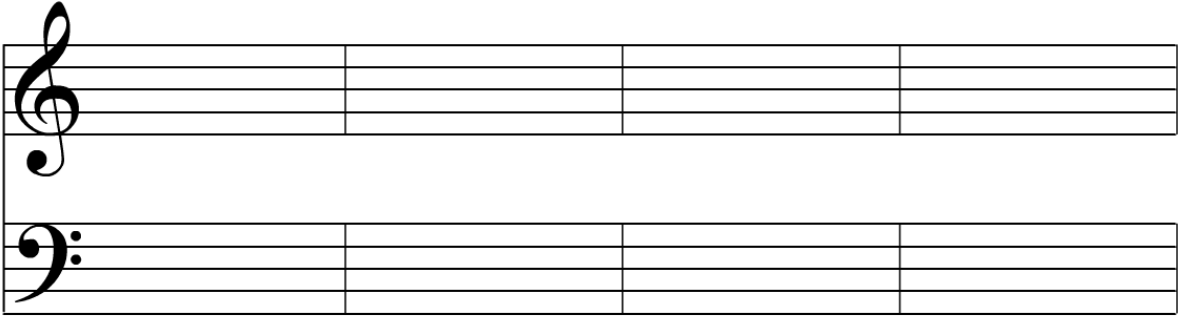




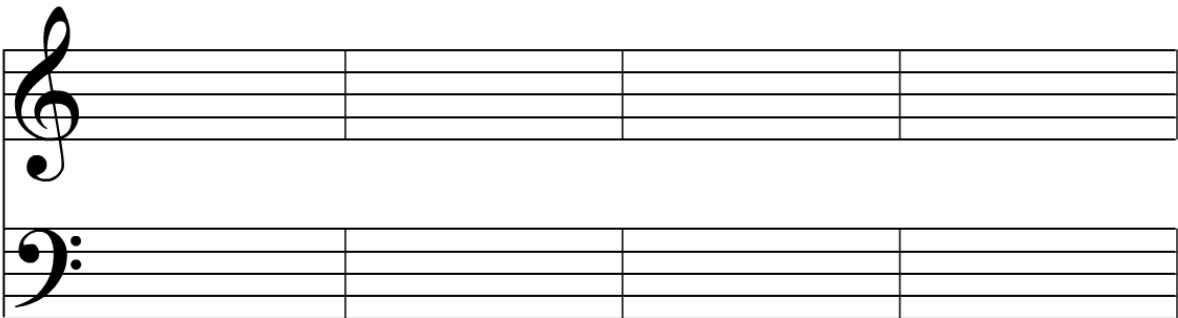
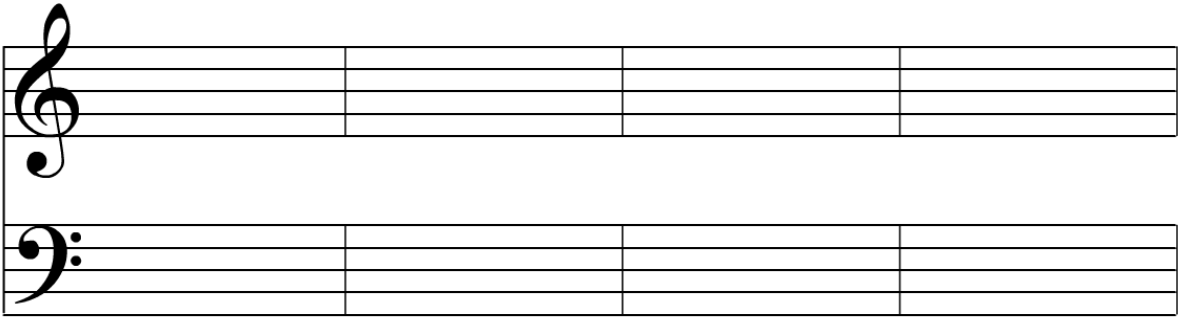
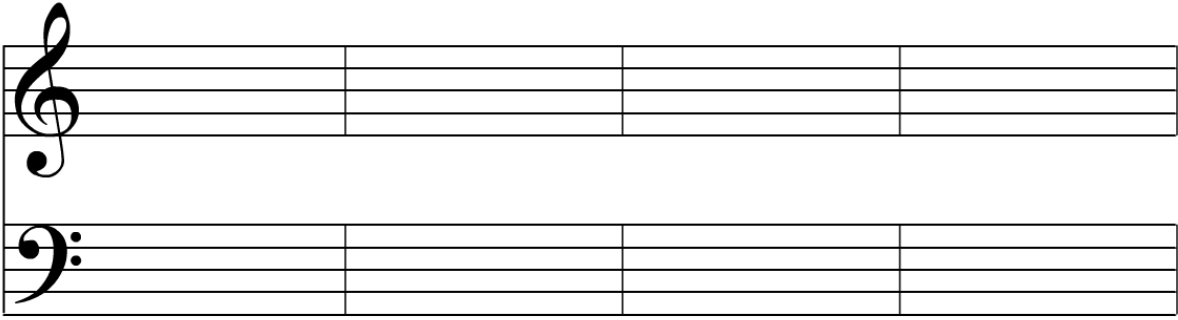
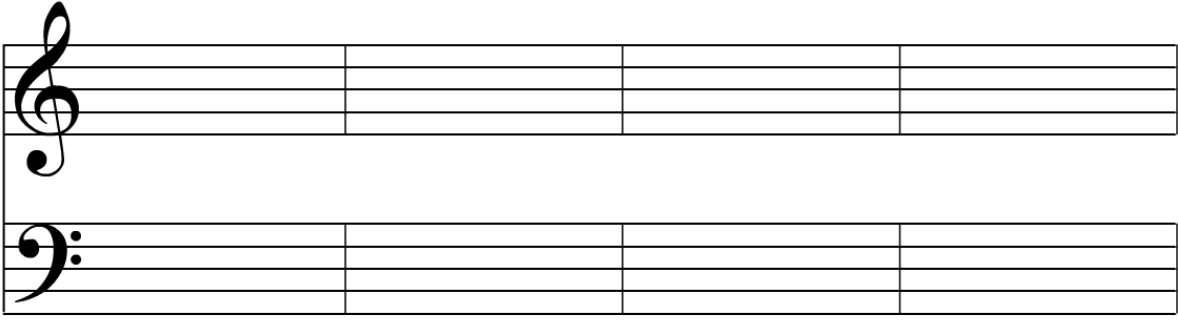


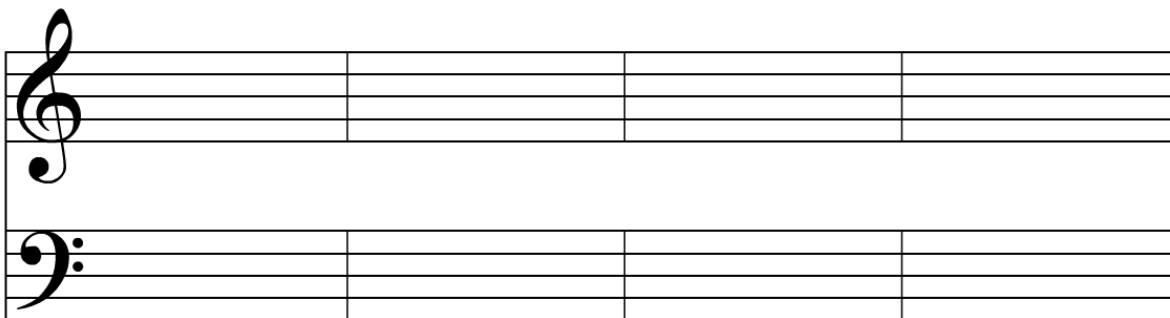
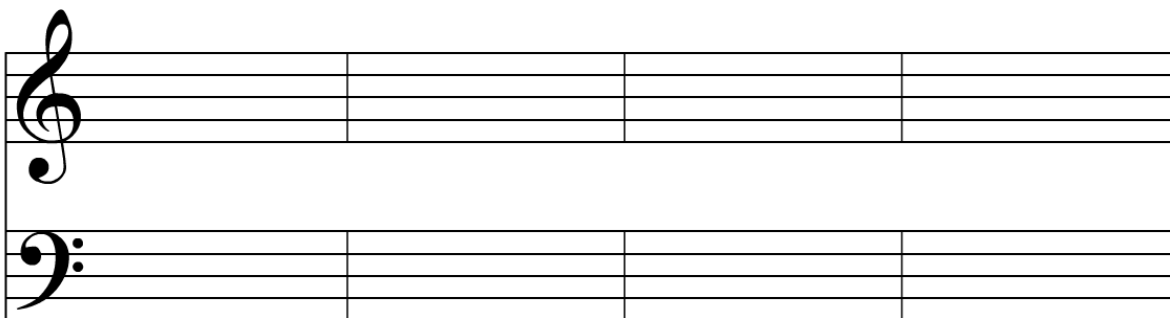
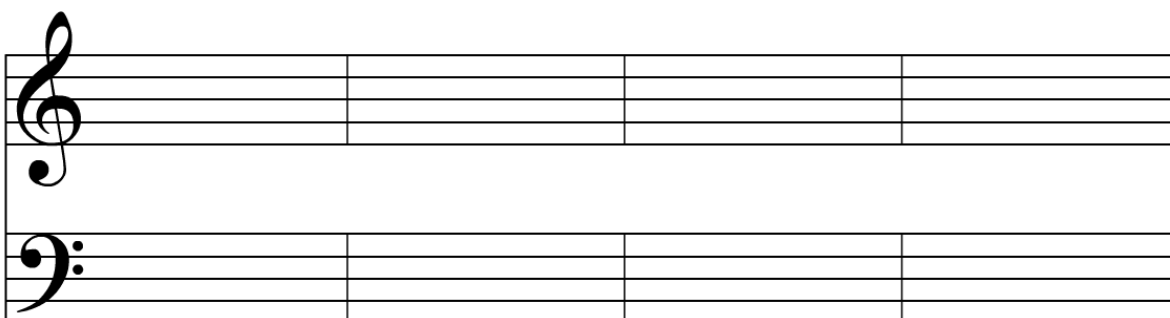
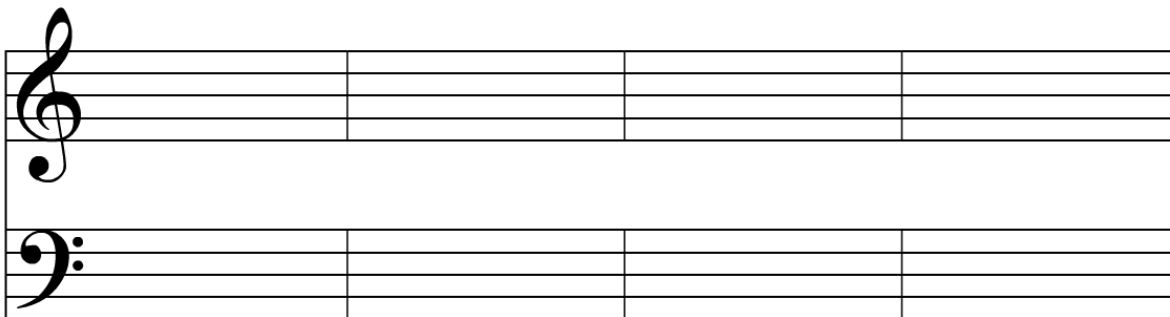












# Dictation Template

## Four Part Dictation

A musical dictation template consisting of four horizontal staves. The staves are labeled on the left side with a large curly bracket. From top to bottom, the labels are: Soprano, Alto, Tenor, and Bass. Each staff is a five-line musical staff, currently empty.

Soprano

Alto

Tenor

Bass

A musical staff system consisting of four staves. The top staff is labeled 'Soprano', the second 'Alto', the third 'Tenor', and the bottom 'Bass'. A large curly brace on the left side groups all four staves together.An empty musical staff system consisting of four staves, grouped by a large curly brace on the left side.An empty musical staff system consisting of four staves, grouped by a large curly brace on the left side.

Soprano

Alto

Tenor

Bass

A musical staff system consisting of four staves. The top staff is labeled 'Soprano', the second 'Alto', the third 'Tenor', and the bottom 'Bass'. A large curly brace on the left side groups all four staves together.

An empty musical staff system consisting of four staves, grouped by a large curly brace on the left side.


An empty musical staff system consisting of four staves, grouped by a large curly brace on the left side.

Soprano

Alto

Tenor

Bass



This block contains the first system of a four-part vocal score. It consists of four horizontal musical staves, each with five lines. The staves are labeled on the left as Soprano, Alto, Tenor, and Bass. A large curly brace on the left side of the staves groups them together. The staves are currently empty.



This block contains the second system of the musical score, consisting of four empty musical staves grouped by a large curly brace on the left.



This block contains the third system of the musical score, consisting of four empty musical staves grouped by a large curly brace on the left.

Soprano

Alto

Tenor

Bass

A musical staff system consisting of four staves. The top staff is labeled 'Soprano', the second 'Alto', the third 'Tenor', and the bottom 'Bass'. A large curly brace on the left side groups all four staves together.

An empty musical staff system consisting of four staves, grouped by a large curly brace on the left side.


An empty musical staff system consisting of four staves, grouped by a large curly brace on the left side.

Soprano

Alto

Tenor

Bass





Soprano

Alto

Tenor

Bass

This block contains four blank musical staves, each consisting of five horizontal lines. The staves are arranged vertically and are grouped by a large curly brace on the left side. The labels 'Soprano', 'Alto', 'Tenor', and 'Bass' are positioned to the left of the first, second, third, and fourth staves, respectively.This block contains four blank musical staves, each consisting of five horizontal lines. The staves are arranged vertically and are grouped by a large curly brace on the left side.This block contains four blank musical staves, each consisting of five horizontal lines. The staves are arranged vertically and are grouped by a large curly brace on the left side.

Soprano

Alto

Tenor

Bass



Soprano

Alto

Tenor

Bass



This block contains the first system of a four-part vocal score. It consists of four horizontal musical staves, each with five lines. The staves are grouped together by a large curly brace on the left side. The labels 'Soprano', 'Alto', 'Tenor', and 'Bass' are positioned to the left of their respective staves. The staves are currently empty, with no musical notation.



This block contains the second system of the musical score, consisting of four empty musical staves grouped by a large curly brace on the left side. No labels are present for this system.



This block contains the third system of the musical score, consisting of four empty musical staves grouped by a large curly brace on the left side. No labels are present for this system.

Soprano

Alto

Tenor

Bass



A musical staff system consisting of four staves. The staves are labeled from top to bottom: Soprano, Alto, Tenor, and Bass. Each staff is a five-line musical staff, and the entire system is enclosed in a large left-facing curly bracket.



An empty musical staff system consisting of four staves, enclosed in a large left-facing curly bracket. This system is identical in structure to the one above but contains no musical notation.



A second empty musical staff system consisting of four staves, enclosed in a large left-facing curly bracket. This system is identical in structure to the one above but contains no musical notation.

Soprano

Alto

Tenor

Bass

A musical staff system consisting of four staves. The top staff is labeled 'Soprano', the second 'Alto', the third 'Tenor', and the bottom 'Bass'. A large curly brace on the left side groups all four staves together.

An empty musical staff system consisting of four staves, grouped by a large curly brace on the left side.

An empty musical staff system consisting of four staves, grouped by a large curly brace on the left side.