

# The Practice Room

Learn to Sight Sing.

## Level 1

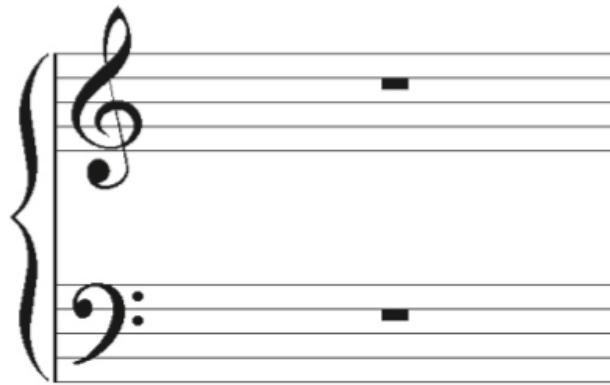
*Rhythmic Reading*  
*Sight Singing*  
*Two Part Reading*

## 60 Examples

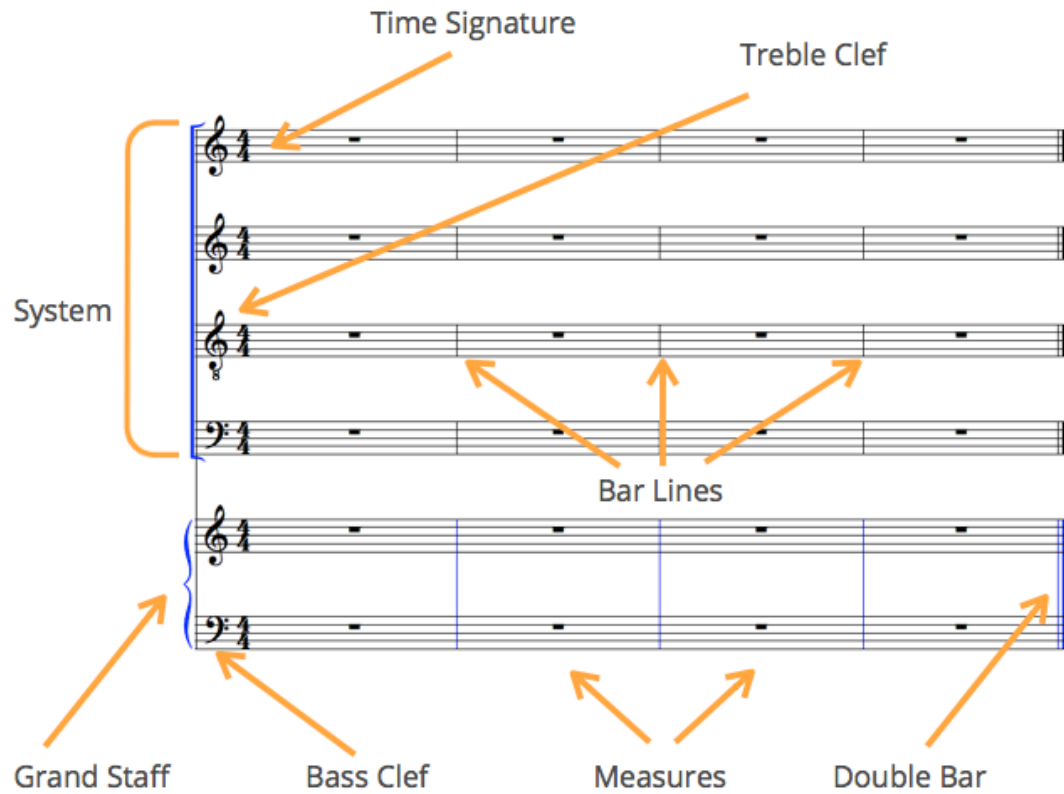


# Stuff to know

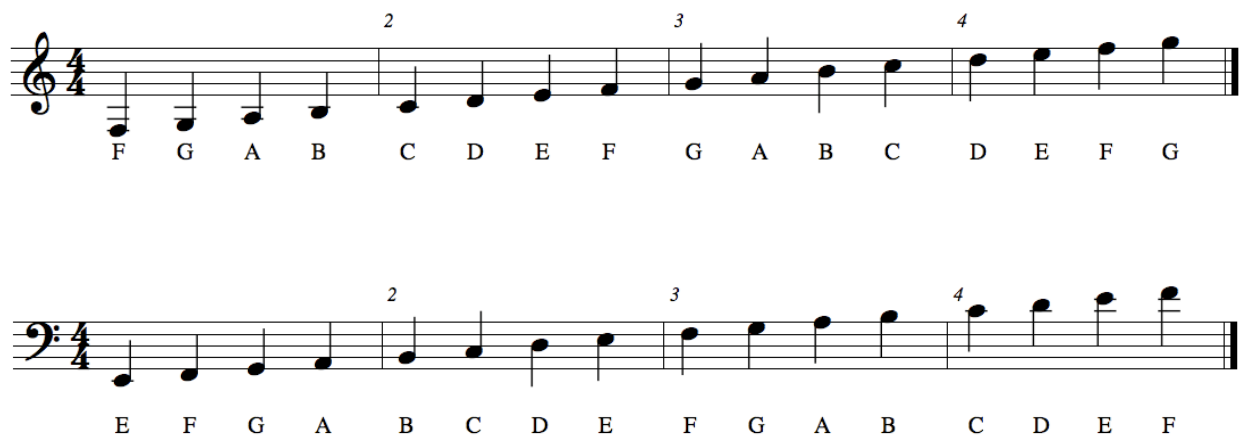
## Music Basics



## Quick Guide to Sheet Music



## Note Names



## Basic Count Singing

Count singing can help you understand where you are in time in a piece of music. Here are some basic guidelines.

First look at the time signature. In this book, we'll be focusing on 3 time signatures.



The bottom number means the quarter note gets the beat. The top number tells us how many beats are in a measure.

Count Singing just means we will sing the rhythm we see. If we see four quarter notes we sing:



A half note lasts for two beats, so if we had a measure with one half note and one quarter note, we'd sing:



Notice that I wrote a dash between beats one and two to indicate holding the note lasts for two beats. But we'd still just be singing 1 2 3 4.

# Rhythmic Reading One

## 20 Exercises



## In Rhythmic Reading Level One we will cover:

- Quarter Notes
- Half Notes
- Dotted Half Notes
- Whole Notes

The following time signatures will be used:



The four on the bottom represents a quarter. That's the note that "feels" the beat.

The number on the top represents how many beats are in a measure.

Quarter Note = 1 beat



Half Note = 2 beats



Dotted Half Note = 3 beats

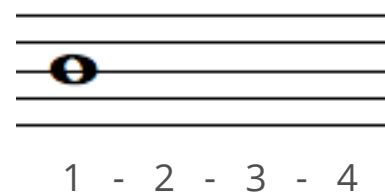
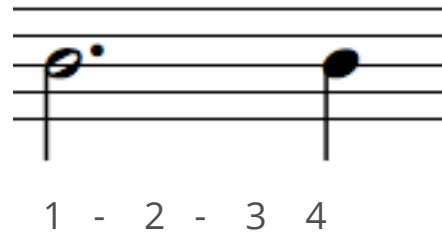
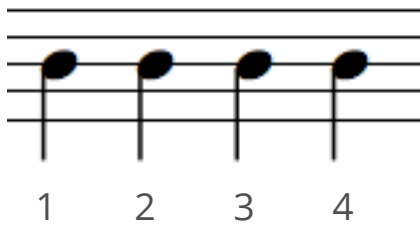


Whole Note = 4 beats



When writing out the counts, use a dash to count notes of longer duration.

Look at the top number to determine the number of beats. Any combination of notes can be used as long as it's not more than the beats indicated in the time signature. Here are some examples of 4/4 time.



## Example 1

Example 1, measures 1-4. The score is in 4/4 time, featuring a treble and bass staff. The melody in the treble staff consists of quarter notes: G4 (measure 1), A4 (measure 2), B4 (measure 3), and C5 (measure 4). The bass staff consists of quarter notes: G3 (measure 1), A3 (measure 2), B3 (measure 3), and C4 (measure 4). Fingering numbers 2, 3, and 4 are indicated above the notes in measures 2, 3, and 4 respectively.

## Example 2

Example 2, measures 1-4. The score is in 4/4 time, featuring a treble and bass staff. The melody in the treble staff consists of quarter notes: G4 (measure 1), A4 (measure 2), B4 (measure 3), and C5 (measure 4). The bass staff consists of quarter notes: G3 (measure 1), A3 (measure 2), B3 (measure 3), and C4 (measure 4). Fingering numbers 2, 3, and 4 are indicated above the notes in measures 2, 3, and 4 respectively.



## Example 3



## Example 4



## Example 5

Example 5 is a musical score in 3/4 time, consisting of two systems of two staves each. The first system contains measures 1 through 4, and the second system contains measures 5 through 8. The melody is written in the treble clef, and the bass line is in the bass clef. The key signature is one flat (B-flat). The melody consists of quarter notes, with the final measure of each system being a half note. The bass line consists of quarter notes, with the final measure of each system being a half note. Fingerings are indicated by numbers 2, 3, and 4 above the notes in the first system, and 5, 6, 7, and 8 above the notes in the second system.

## Example 6

Example 6 is a musical score in 3/4 time, consisting of two systems of two staves each. The first system contains measures 1 through 4, and the second system contains measures 5 through 8. The melody is written in the treble clef, and the bass line is in the bass clef. The key signature is one flat (B-flat). The melody consists of quarter notes, with the final measure of each system being a half note. The bass line consists of quarter notes, with the final measure of each system being a half note. Fingerings are indicated by numbers 2, 3, and 4 above the notes in the first system, and 5, 6, 7, and 8 above the notes in the second system.

## Example 7

Example 7 shows the first four measures of a piece in 2/4 time. The melody in the treble clef consists of quarter notes: C4 (measure 1), D4 (measure 2), E4 (measure 3), and F4 (measure 4). The bass line in the bass clef consists of half notes: C3 (measure 1), D3 (measure 2), E3 (measure 3), and F3 (measure 4). Fingering numbers 2, 3, and 4 are written above the notes in measures 2, 3, and 4 respectively.

## Example 8

Example 8 shows the next four measures of the piece. The melody in the treble clef continues with quarter notes: G4 (measure 5), A4 (measure 6), B4 (measure 7), and C5 (measure 8). The bass line continues with half notes: G3 (measure 5), A3 (measure 6), B3 (measure 7), and C4 (measure 8). Fingering numbers 5, 6, 7, and 8 are written above the notes in measures 5, 6, 7, and 8 respectively.

## Example 9

Example 9 is an 8-measure musical exercise in 4/4 time, presented in two systems. The first system contains measures 1 through 4, and the second system contains measures 5 through 8. The notation is written on a grand staff with a treble and bass clef. Fingerings are indicated by numbers 2, 3, and 4 above the notes in the first system, and 5, 6, 7, and 8 above the notes in the second system. The melody in the treble clef consists of quarter notes in measures 1-3, followed by a dotted quarter note and an eighth note in measure 4, and then quarter notes in measures 5-7, ending with a whole note in measure 8. The bass line consists of quarter notes in measures 1-3, followed by a dotted quarter note and an eighth note in measure 4, and then quarter notes in measures 5-7, ending with a whole note in measure 8.

## Example 10

Example 10 is an 8-measure musical exercise in 4/4 time, presented in two systems. The first system contains measures 1 through 4, and the second system contains measures 5 through 8. The notation is written on a grand staff with a treble and bass clef. Fingerings are indicated by numbers 2, 3, and 4 above the notes in the first system, and 5, 6, 7, and 8 above the notes in the second system. The melody in the treble clef begins with a whole rest in measure 1, followed by quarter notes in measures 2-4, and then quarter notes in measures 5-7, ending with a dotted quarter note and an eighth note in measure 8. The bass line consists of quarter notes in measures 1-3, followed by a dotted quarter note and an eighth note in measure 4, and then quarter notes in measures 5-7, ending with a dotted quarter note and an eighth note in measure 8.

## Workbook Check Sheet

Name \_\_\_\_\_ Check # \_\_\_\_\_

Grade	Completion	Comprehension
A	All examples are complete.	Student shows clear understanding of all concepts.
B	Most examples are complete.	Student shows clear understanding of all concepts with occasional minor errors.
C	About half the examples are complete.	Student is struggling with some major concepts.
D	Less than half the examples are complete.	Student shows very little understanding of major concepts.
F	Almost no examples have been completed.	No comprehension is evident.

Grade \_\_\_\_\_

Comments:

## Example 11

Example 11 shows a musical score in 4/4 time, measures 2 through 8. The score is written for two staves, Treble and Bass. The key signature is one flat (B-flat). The melody in the Treble staff begins with a whole rest in measure 2, followed by a dotted half note G4 in measure 3, and then eighth notes A4, B4, C5, D5, E5, F5, G5 in measures 4 through 8. The bass line in the Bass staff begins with a whole rest in measure 2, followed by a dotted half note F3 in measure 3, and then eighth notes G3, A3, B3, C4, D4, E4, F4 in measures 4 through 8. The piece concludes with a double bar line at the end of measure 8.

## Example 12

Example 12 shows a musical score in 4/4 time, measures 2 through 8. The score is written for two staves, Treble and Bass. The key signature is one flat (B-flat). The melody in the Treble staff begins with eighth notes G4, A4, B4, C5 in measure 2, followed by eighth notes D5, E5, F5, G5 in measure 3, and then eighth notes A5, B5, C6, D6 in measure 4. The bass line in the Bass staff begins with eighth notes G3, A3, B3, C4 in measure 2, followed by eighth notes D4, E4, F4, G4 in measure 3, and then eighth notes A4, B4, C5, D5 in measure 4. The piece concludes with a double bar line at the end of measure 8.

## Example 13

Example 13 shows a musical score in 2/4 time, measures 1 through 4. The score is written for two staves, Treble and Bass. The notes are as follows:

Measure	Treble Staff	Bass Staff
1	C4 (quarter)	C4 (quarter)
2	D4 (quarter)	D4 (quarter)
3	E4 (quarter)	E4 (quarter)
4	F4 (quarter)	F4 (quarter)

## Example 14

Example 14 shows a musical score in 3/4 time, measures 1 through 4. The score is written for two staves, Treble and Bass. The notes are as follows:

Measure	Treble Staff	Bass Staff
1	C4 (half)	C4 (half)
2	D4 (quarter)	D4 (quarter)
3	E4 (quarter)	E4 (quarter)
4	F4 (quarter)	F4 (quarter)

## Example 15

Example 15 is an 8-measure exercise in 4/4 time. The notation is as follows:

- Measures 1-4:** Treble and bass staves. Treble: Quarter notes (F4, G4, A4, B4). Bass: Quarter notes (F3, G3, A3, B3). Fingering: Treble (2, 3, 4), Bass (2, 3, 4).
- Measures 5-8:** Treble and bass staves. Treble: Half notes (B4, A4), then whole notes (G4, F4). Bass: Half notes (B3, A3), then whole notes (G3, F3). Fingering: Treble (5, 6, 7, 8), Bass (5, 6, 7, 8).

## Example 16

Example 16 is an 8-measure exercise in 4/4 time. The notation is as follows:

- Measures 1-4:** Treble and bass staves. Treble: Quarter notes (F4, G4, A4, B4). Bass: Quarter notes (F3, G3, A3, B3). Fingering: Treble (2, 3, 4), Bass (2, 3, 4).
- Measures 5-8:** Treble and bass staves. Treble: Half notes (B4, A4), then quarter notes (G4, F4). Bass: Half notes (B3, A3), then quarter notes (G3, F3). Fingering: Treble (5, 6, 7, 8), Bass (5, 6, 7, 8).



## Example 17

Example 17 shows the first four measures of a piece in 4/4 time. The melody in the treble clef consists of quarter notes: C4 (measure 1), D4 (measure 2), E4 (measure 3), and F4 (measure 4). The bass line in the bass clef consists of quarter notes: C3 (measure 1), D3 (measure 2), E3 (measure 3), and F3 (measure 4). Fingering numbers 2, 3, and 4 are written above the notes in measures 2, 3, and 4 respectively.

## Example 18

Example 18 shows measures 5 through 8 of the piece. The melody in the treble clef consists of quarter notes: G4 (measure 5), A4 (measure 6), B4 (measure 7), and C5 (measure 8). The bass line in the bass clef consists of quarter notes: G3 (measure 5), A3 (measure 6), B3 (measure 7), and C4 (measure 8). Fingering numbers 5, 6, 7, and 8 are written above the notes in measures 5, 6, 7, and 8 respectively.

## Example 19



## Example 20



## Workbook Check Sheet

Name \_\_\_\_\_ Check # \_\_\_\_\_

Grade	Completion	Comprehension
A	All examples are complete.	Student shows clear understanding of all concepts.
B	Most examples are complete.	Student shows clear understanding of all concepts with occasional minor errors.
C	About half the examples are complete.	Student is struggling with some major concepts.
D	Less than half the examples are complete.	Student shows very little understanding of major concepts.
F	Almost no examples have been completed.	No comprehension is evident.

Grade \_\_\_\_\_

Comments:

The musical score for 'The Rose Tree' is presented in a two-staff format (treble and bass clef) with a 4/4 time signature. The melody is written in the treble staff, and the bass line is in the bass staff. The score is divided into eight measures, each numbered above the treble staff. The melody consists of eighth and quarter notes, while the bass line features a mix of quarter and eighth notes, often with beamed pairs. The key signature has one flat (B-flat).

Measure 1: Treble staff has a quarter note G4, a quarter note A4, and a half note B4. Bass staff has a quarter note G2, a quarter note F2, and a half note E2.

Measure 2: Treble staff has a quarter note G4, a quarter note A4, and a half note B4. Bass staff has a quarter note G2, a quarter note F2, and a half note E2.

Measure 3: Treble staff has a quarter note G4, a quarter note A4, and a half note B4. Bass staff has a quarter note G2, a quarter note F2, and a half note E2.

Measure 4: Treble staff has a quarter note G4, a quarter note A4, and a half note B4. Bass staff has a quarter note G2, a quarter note F2, and a half note E2.

Measure 5: Treble staff has a quarter note G4, a quarter note A4, and a half note B4. Bass staff has a quarter note G2, a quarter note F2, and a half note E2.

Measure 6: Treble staff has a quarter note G4, a quarter note A4, and a half note B4. Bass staff has a quarter note G2, a quarter note F2, and a half note E2.

Measure 7: Treble staff has a quarter note G4, a quarter note A4, and a half note B4. Bass staff has a quarter note G2, a quarter note F2, and a half note E2.

Measure 8: Treble staff has a quarter note G4, a quarter note A4, and a half note B4. Bass staff has a quarter note G2, a quarter note F2, and a half note E2.

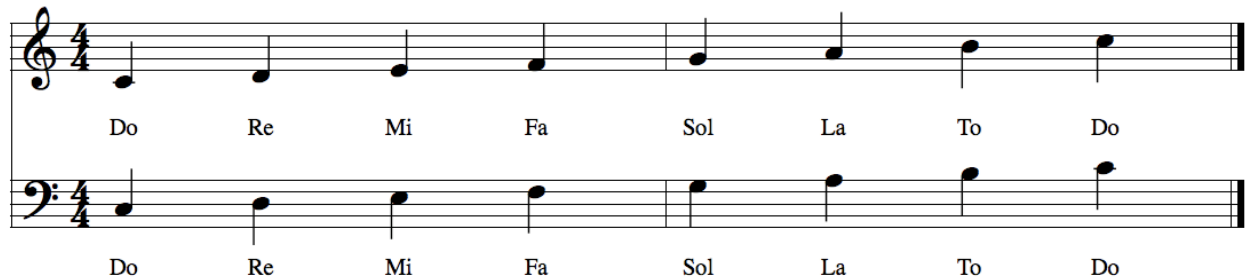
In Sight Singing Level One we will continue to cover:

- Quarter Notes, Half Notes, Dotted Half Notes, Whole Notes
- 4/4, 3/4, and 2/4 time

We will add:

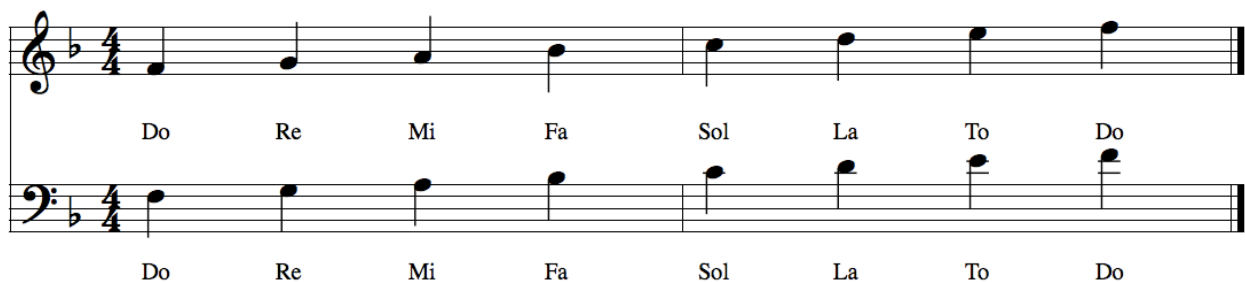
- Stepwise Motion - the only leap will be from Sol to Do
- C Major, F Major, and G Major
- Examples will start and end on Do.

## C Major



Musical notation for the C Major scale in 4/4 time. The scale is written on two staves: Treble and Bass. The notes are: Do (C4), Re (D4), Mi (E4), Fa (F4), Sol (G4), La (A4), To (B4), and Do (C5). The notes are written as quarter notes. The Treble staff starts on middle C (Do) and the Bass staff starts on the C below middle C (Do). The scale ends on the final Do in each staff.

## F Major



Musical notation for the F Major scale in 4/4 time. The scale is written on two staves: Treble and Bass. The notes are: Do (F3), Re (G3), Mi (A3), Fa (Bb3), Sol (C4), La (D4), To (E4), and Do (F4). The notes are written as quarter notes. The Treble staff starts on F3 (Do) and the Bass staff starts on F3 (Do). The scale ends on the final Do in each staff.

## G Major

Musical notation for the G Major scale in 4/4 time. The notation is presented in two staves: Treble Clef (top) and Bass Clef (bottom). The key signature is one sharp (F#). The scale is written in a stepwise manner, starting on G4 in the treble and G3 in the bass, and ending on G4 in the treble and G3 in the bass. Solfège labels (Do, Re, Mi, Fa, Sol, La, To, Do) are placed below the notes.

Staff	1	2	3	4	5	6	7	8
Treble	G4	A4	B4	C5	D5	E5	F#5	G5
Bass	G3	A2	B2	C3	D3	E3	F#3	G3
Solfège	Do	Re	Mi	Fa	Sol	La	To	Do

## Example 1

Example 1 is a musical score in 4/4 time, consisting of eight measures. The notation is presented in two systems, each with a treble and bass staff. The key signature is one flat (B-flat). The notes and fingerings are as follows:

Measure	Treble Staff	Bass Staff
1	C4 (half note)	C3 (half note)
2	D4 (quarter), E4 (quarter), F4 (quarter)	D3 (quarter), E3 (quarter), F3 (quarter)
3	G4 (quarter), A4 (quarter), B4 (quarter)	G3 (quarter), A3 (quarter), B3 (quarter)
4	C5 (quarter), B4 (quarter), A4 (quarter)	C4 (quarter), B3 (quarter), A3 (quarter)
5	G4 (quarter), F4 (quarter), E4 (quarter)	G3 (quarter), F3 (quarter), E3 (quarter)
6	D4 (quarter), C4 (quarter), B3 (quarter)	D3 (quarter), C3 (quarter), B2 (quarter)
7	A3 (quarter), G3 (quarter), F3 (quarter)	A2 (quarter), G2 (quarter), F2 (quarter)
8	E3 (quarter), D3 (quarter), C3 (half)	E2 (quarter), D2 (quarter), C2 (half)

## Example 2

Example 2 is a musical score in 4/4 time, consisting of eight measures. The notation is presented in two systems, each with a treble and bass staff. The key signature is two flats (B-flat and E-flat). The notes and fingerings are as follows:

Measure	Treble Staff	Bass Staff
1	C4 (half note)	C3 (half note)
2	D4 (quarter), E4 (quarter), F4 (quarter)	D3 (quarter), E3 (quarter), F3 (quarter)
3	G4 (quarter), A4 (quarter), B4 (quarter)	G3 (quarter), A3 (quarter), B3 (quarter)
4	C5 (quarter), B4 (quarter), A4 (quarter)	C4 (quarter), B3 (quarter), A3 (quarter)
5	G4 (quarter), F4 (quarter), E4 (quarter)	G3 (quarter), F3 (quarter), E3 (quarter)
6	D4 (quarter), C4 (quarter), B3 (quarter)	D3 (quarter), C3 (quarter), B2 (quarter)
7	A3 (quarter), G3 (quarter), F3 (quarter)	A2 (quarter), G2 (quarter), F2 (quarter)
8	E3 (quarter), D3 (quarter), C3 (half)	E2 (quarter), D2 (quarter), C2 (half)

## Example 3

Example 3 is a musical score in 4/4 time, key of D major (one sharp). It consists of two systems of two staves each. The first system contains measures 1 through 4, and the second system contains measures 5 through 8. The melody is written in the treble clef, and the bass line is in the bass clef. Fingerings are indicated by numbers 2, 3, and 4 above the notes in measures 1-4, and 5, 6, 7, and 8 above the notes in measures 5-8. The piece concludes with a double bar line at the end of measure 8.

## Example 4

Example 4 is a musical score in 4/4 time, key of D major (one sharp). It consists of two systems of two staves each. The first system contains measures 1 through 4, and the second system contains measures 5 through 8. The melody is written in the treble clef, and the bass line is in the bass clef. Fingerings are indicated by numbers 2, 3, and 4 above the notes in measures 1-4, and 5, 6, 7, and 8 above the notes in measures 5-8. The piece concludes with a double bar line at the end of measure 8.



## Example 5

Example 5 shows the first four measures of a piece in 3/4 time, key of B-flat major. The melody in the treble clef starts on G4, moves to A4 (fingered 2), B4 (fingered 3), and C5 (fingered 4). The bass line starts on B2, moves to C3 (fingered 2), D3 (fingered 3), and E3 (fingered 4). The piece concludes with a double bar line at the end of measure 4.

## Example 6

Example 6 shows the first four measures of a piece in 3/4 time, key of D major. The melody in the treble clef starts on D4, moves to E4 (fingered 2), F#4 (fingered 3), and G4 (fingered 4). The bass line starts on D2, moves to E2 (fingered 2), F#2 (fingered 3), and G2 (fingered 4). The piece concludes with a double bar line at the end of measure 4.

## Example 7

Example 7 is an 8-measure exercise in 3/4 time. The melody is written in the treble clef, and the bass line is in the bass clef. The key signature is natural (no sharps or flats). The melody consists of quarter notes in measures 1-3, followed by a half note in measure 4, and then quarter notes in measures 5-7, ending with a half note in measure 8. The bass line follows a similar pattern, with quarter notes in measures 1-3, a half note in measure 4, and quarter notes in measures 5-7, ending with a half note in measure 8. Fingering numbers 2, 3, and 4 are indicated above the melody notes in measures 2, 3, and 4 respectively. Fingering numbers 5, 6, 7, and 8 are indicated above the melody notes in measures 5, 6, 7, and 8 respectively.

## Example 8

Example 8 is an 8-measure exercise in 3/4 time. The melody is written in the treble clef, and the bass line is in the bass clef. The key signature has one flat (B-flat). The melody consists of quarter notes in measures 1-3, followed by a half note in measure 4, and then quarter notes in measures 5-7, ending with a half note in measure 8. The bass line follows a similar pattern, with quarter notes in measures 1-3, a half note in measure 4, and quarter notes in measures 5-7, ending with a half note in measure 8. Fingering numbers 2, 3, and 4 are indicated above the melody notes in measures 2, 3, and 4 respectively. Fingering numbers 5, 6, 7, and 8 are indicated above the melody notes in measures 5, 6, 7, and 8 respectively.

## Example 9

Example 9 shows the first four measures of a piece in 2/4 time, key of D major. The melody in the treble clef consists of quarter notes: D4 (measure 1), E4 (measure 2), F#4 (measure 3), and G4 (measure 4). The bass line in the bass clef consists of quarter notes: D3 (measure 1), E3 (measure 2), F#3 (measure 3), and G3 (measure 4). Fingering numbers 2, 3, and 4 are indicated above the notes in measures 2, 3, and 4 respectively.

## Example 10

Example 10 shows the first four measures of a piece in 4/4 time, key of D major. The melody in the treble clef consists of half notes: D4 (measure 1), E4 (measure 2), F#4 (measure 3), and G4 (measure 4). The bass line in the bass clef consists of half notes: D3 (measure 1), E3 (measure 2), F#3 (measure 3), and G3 (measure 4). Fingering numbers 2, 3, and 4 are indicated above the notes in measures 2, 3, and 4 respectively.

## Workbook Check Sheet

Name \_\_\_\_\_ Check # \_\_\_\_\_

Grade	Completion	Comprehension
A	All examples are complete.	Student shows clear understanding of all concepts.
B	Most examples are complete.	Student shows clear understanding of all concepts with occasional minor errors.
C	About half the examples are complete.	Student is struggling with some major concepts.
D	Less than half the examples are complete.	Student shows very little understanding of major concepts.
F	Almost no examples have been completed.	No comprehension is evident.

Grade \_\_\_\_\_

Comments:

## Example 11

Example 11 is a musical score in 2/4 time, consisting of four staves. The first two staves are for the treble and bass clefs, and the next two are for the treble and bass clefs. The melody is written in the treble clef, and the bass line is in the bass clef. The piece is in 2/4 time. The melody consists of a sequence of eighth notes: C4, D4, E4, F4, G4, A4, B4, C5. The bass line consists of a sequence of eighth notes: C3, D3, E3, F3, G3, A3, B3, C4. The piece ends with a double bar line.

## Example 12

Example 12 is a musical score in 3/4 time, consisting of four staves. The first two staves are for the treble and bass clefs, and the next two are for the treble and bass clefs. The melody is written in the treble clef, and the bass line is in the bass clef. The piece is in 3/4 time. The melody consists of a sequence of eighth notes: C4, D4, E4, F4, G4, A4, B4, C5. The bass line consists of a sequence of eighth notes: C3, D3, E3, F3, G3, A3, B3, C4. The piece ends with a double bar line.

## Example 13

Example 13 is a musical score in 4/4 time, key of D major (one sharp). It consists of two systems of two staves each. The first system contains measures 1 through 4, and the second system contains measures 5 through 8. The melody is written in the treble clef, and the bass line is in the bass clef. Fingerings are indicated by numbers 1-4 above the notes in measures 1-4, and 5-8 above the notes in measures 5-8. The piece concludes with a double bar line at the end of measure 8.

## Example 14

Example 14 is a musical score in 4/4 time, key of D major (one sharp). It consists of two systems of two staves each. The first system contains measures 1 through 4, and the second system contains measures 5 through 8. The melody is written in the treble clef, and the bass line is in the bass clef. Fingerings are indicated by numbers 1-4 above the notes in measures 1-4, and 5-8 above the notes in measures 5-8. The piece concludes with a double bar line at the end of measure 8.

## Example 15

Example 15 is a musical exercise in 4/4 time, featuring a key signature of one flat (B-flat). The exercise is presented in two systems, each with a treble and bass staff. The first system contains measures 1 through 4, with fingerings 2, 3, and 4 indicated above the notes. The second system contains measures 5 through 8, with fingerings 5, 6, 7, and 8 indicated above the notes. The exercise concludes with a double bar line at the end of measure 8.

## Example 16

Example 16 is a musical exercise in 2/4 time, featuring a key signature of one sharp (F-sharp). The exercise is presented in two systems, each with a treble and bass staff. The first system contains measures 1 through 4, with fingerings 2, 3, and 4 indicated above the notes. The second system contains measures 5 through 8, with fingerings 5, 6, 7, and 8 indicated above the notes. The exercise concludes with a double bar line at the end of measure 8.

## Example 17

Example 17 is a musical score in 3/4 time, consisting of two systems of two staves each. The first system contains measures 1 through 4, and the second system contains measures 5 through 8. The melody is written in the treble clef, and the bass line is in the bass clef. The key signature is one flat (B-flat). The melody consists of eighth and quarter notes, while the bass line consists of quarter notes. Fingerings are indicated by numbers 2, 3, and 4 above the notes in the first system, and 5, 6, 7, and 8 above the notes in the second system.

## Example 18

Example 18 is a musical score in 4/4 time, consisting of two systems of two staves each. The first system contains measures 1 through 4, and the second system contains measures 5 through 8. The melody is written in the treble clef, and the bass line is in the bass clef. The key signature is one flat (B-flat). The melody consists of quarter and eighth notes, while the bass line consists of quarter notes. Fingerings are indicated by numbers 2, 3, and 4 above the notes in the first system, and 5, 6, 7, and 8 above the notes in the second system.



## Example 19

Example 19 shows a musical score in 3/4 time, key of D major (one sharp). The score consists of two systems, each with a treble and bass staff. The first system contains measures 1 through 4, and the second system contains measures 5 through 8. Fingerings are indicated by numbers 1-4 in the first system and 5-8 in the second system. The melody in the treble staff uses eighth and quarter notes, while the bass staff provides a harmonic accompaniment with quarter and eighth notes. The piece concludes with a double bar line at the end of measure 8.

## Example 20

Example 20 shows a musical score in 4/4 time, key of D major (one sharp). The score consists of two systems, each with a treble and bass staff. The first system contains measures 1 through 4, and the second system contains measures 5 through 9. Fingerings are indicated by numbers 1-4 in the first system and 5-9 in the second system. The melody in the treble staff uses quarter and eighth notes, while the bass staff provides a harmonic accompaniment with quarter and eighth notes. The piece concludes with a double bar line at the end of measure 9.

## Workbook Check Sheet

Name \_\_\_\_\_ Check # \_\_\_\_\_

Grade	Completion	Comprehension
A	All examples are complete.	Student shows clear understanding of all concepts.
B	Most examples are complete.	Student shows clear understanding of all concepts with occasional minor errors.
C	About half the examples are complete.	Student is struggling with some major concepts.
D	Less than half the examples are complete.	Student shows very little understanding of major concepts.
F	Almost no examples have been completed.	No comprehension is evident.

Grade \_\_\_\_\_

Comments:

# Two Part Reading One

## 20 Exercises

Exercise 1: A two-part musical exercise in 3/4 time. The first staff (treble clef) contains four measures with notes G4, A4, B4, and A4, with fingerings 2, 3, and 4 indicated above the second, third, and fourth measures respectively. The second staff (bass clef) contains four measures with notes E3, F3, G3, and F3, with fingerings 2, 3, and 4 indicated above the second, third, and fourth measures respectively. The exercise concludes with a double bar line.

Exercise 2: A two-part musical exercise in 3/4 time. The first staff (treble clef) contains four measures with notes C4, D4, E4, and D4, with fingerings 5, 6, 7, and 8 indicated above the first, second, third, and fourth measures respectively. The second staff (bass clef) contains four measures with notes G2, A2, B2, and A2, with fingerings 5, 6, 7, and 8 indicated above the first, second, third, and fourth measures respectively. The exercise concludes with a double bar line.

In Two Part Reading we will now sight sing in two part harmony.

Women's voices will be singing the treble clef:



Men's voices will be singing the bass clef:



Both voices will start on Do and both voices will have identical rhythms.

**Tip:**

Refer to page 3 for help with note names.

## Example 1

Example 1 is a musical score in 4/4 time, consisting of eight measures. The notation is presented in two systems, each with a treble and bass staff. The key signature is one flat (B-flat). Fingerings are indicated by numbers 2, 3, and 4 above the notes in the first system, and 5, 6, 7, and 8 above the notes in the second system. The melody in the treble staff moves stepwise, while the bass staff provides a harmonic accompaniment with some rests.

## Example 2

Example 2 is a musical score in 4/4 time, consisting of eight measures. The notation is presented in two systems, each with a treble and bass staff. The key signature is one flat (B-flat). Fingerings are indicated by numbers 2, 3, and 4 above the notes in the first system, and 5, 6, 7, and 8 above the notes in the second system. The melody in the treble staff moves stepwise, while the bass staff provides a harmonic accompaniment with some rests.

## Example 3

Example 3 shows a musical score in 2/4 time, key of D major (one sharp). The score consists of two systems of two staves each. The first system contains measures 1 through 4, and the second system contains measures 5 through 8. Fingerings are indicated by numbers 2, 3, and 4 above the notes in measures 2, 3, and 4. Measure 5 begins with a fingering of 5. The piece concludes with a double bar line at the end of measure 8.

## Example 4

Example 4 shows a musical score in 3/4 time, key of D major (one sharp). The score consists of two systems of two staves each. The first system contains measures 1 through 4, and the second system contains measures 5 through 8. Fingerings are indicated by numbers 2, 3, and 4 above the notes in measures 2, 3, and 4. Measure 5 begins with a fingering of 5. The piece concludes with a double bar line at the end of measure 8.

## Example 5

Example 5 is a musical score in 3/4 time, featuring a treble and bass staff. The key signature has one flat (B-flat). The melody in the treble staff consists of quarter notes, with fingerings 2, 3, and 4 indicated above the notes. The bass staff provides a harmonic accompaniment with half notes, also marked with fingerings 2, 3, and 4. The piece concludes with a double bar line after measure 8.

## Example 6

Example 6 is a musical score in 4/4 time, featuring a treble and bass staff. The key signature has one sharp (F-sharp). The melody in the treble staff consists of quarter notes, with fingerings 2, 3, and 4 indicated above the notes. The bass staff provides a harmonic accompaniment with half notes, also marked with fingerings 2, 3, and 4. The piece concludes with a double bar line after measure 8.

## Example 7

Example 7 is a musical score in 2/4 time, consisting of two systems of two staves each. The first system contains measures 2, 3, and 4. The second system contains measures 5, 6, 7, and 8. The melody is written in the treble clef, and the bass line is in the bass clef. The key signature is one flat (B-flat). The melody consists of quarter notes, and the bass line consists of half notes. The notes are: Measure 2: Treble (C4), Bass (C3); Measure 3: Treble (D4), Bass (D3); Measure 4: Treble (E4), Bass (E3); Measure 5: Treble (F4), Bass (F3); Measure 6: Treble (G4), Bass (G3); Measure 7: Treble (A4), Bass (A3); Measure 8: Treble (Bb4), Bass (Bb3). The piece ends with a double bar line at the end of measure 8.

## Example 8

Example 8 is a musical score in 4/4 time, consisting of two systems of two staves each. The first system contains measures 2, 3, and 4. The second system contains measures 5, 6, 7, and 8. The melody is written in the treble clef, and the bass line is in the bass clef. The key signature is one flat (B-flat). The melody consists of quarter notes, and the bass line consists of half notes. The notes are: Measure 2: Treble (C4), Bass (C3); Measure 3: Treble (D4), Bass (D3); Measure 4: Treble (E4), Bass (E3); Measure 5: Treble (F4), Bass (F3); Measure 6: Treble (G4), Bass (G3); Measure 7: Treble (A4), Bass (A3); Measure 8: Treble (Bb4), Bass (Bb3). The piece ends with a double bar line at the end of measure 8.



## Example 9

Example 9 is a musical score in 3/4 time, key of D major (one sharp). It consists of two systems of two staves each. The first system contains measures 1 through 4, and the second system contains measures 5 through 8. The melody is written in the treble clef, and the bass line is in the bass clef. Fingering numbers 2, 3, and 4 are indicated above the treble staff notes in measures 1-4, and 5, 6, 7, and 8 are indicated above the treble staff notes in measures 5-8. The bass line consists of eighth notes in measures 1-4 and quarter notes in measures 5-8.

## Example 10

Example 10 is a musical score in 4/4 time, key of D major (one sharp). It consists of two systems of two staves each. The first system contains measures 1 through 4, and the second system contains measures 5 through 8. The melody is written in the treble clef, and the bass line is in the bass clef. Fingering numbers 2, 3, and 4 are indicated above the treble staff notes in measures 1-4, and 5, 6, 7, and 8 are indicated above the treble staff notes in measures 5-8. The bass line consists of eighth notes in measures 1-4 and quarter notes in measures 5-8.

## Workbook Check Sheet

Name \_\_\_\_\_ Check # \_\_\_\_\_

Grade	Completion	Comprehension
A	All examples are complete.	Student shows clear understanding of all concepts.
B	Most examples are complete.	Student shows clear understanding of all concepts with occasional minor errors.
C	About half the examples are complete.	Student is struggling with some major concepts.
D	Less than half the examples are complete.	Student shows very little understanding of major concepts.
F	Almost no examples have been completed.	No comprehension is evident.

Grade \_\_\_\_\_

Comments:

## Example 11

Example 11 shows a musical score in 4/4 time, measures 2 through 8. The score is written for two staves, Treble and Bass. The key signature is one flat (B-flat). The melody in the Treble staff consists of quarter notes: G2 (measure 2), A2 (measure 3), B2 (measure 4), and C3 (measure 5). The bass line in the Bass staff consists of quarter notes: G1 (measure 2), A1 (measure 3), B1 (measure 4), and C2 (measure 5). The score ends with a double bar line at the end of measure 8.

## Example 12

Example 12 shows a musical score in 3/4 time, measures 2 through 8. The score is written for two staves, Treble and Bass. The key signature is one flat (B-flat). The melody in the Treble staff consists of quarter notes: G2 (measure 2), A2 (measure 3), B2 (measure 4), and C3 (measure 5). The bass line in the Bass staff consists of quarter notes: G1 (measure 2), A1 (measure 3), B1 (measure 4), and C2 (measure 5). The score ends with a double bar line at the end of measure 8.

## Example 13

Example 13 is a musical score in 3/4 time, key of D major (one sharp). It consists of two systems of two staves each. The first system contains measures 1 through 4, and the second system contains measures 5 through 8. The melody in the treble clef starts on D4, moves to E4, then F#4, and ends on G4. The bass line in the bass clef starts on D3, moves to E3, then F#3, and ends on G3. Fingering numbers 2, 3, and 4 are indicated above the notes in measures 2, 3, and 4 respectively. The piece concludes with a double bar line at the end of measure 8.

## Example 14

Example 14 is a musical score in 4/4 time, key of D major (one sharp). It consists of two systems of two staves each. The first system contains measures 1 through 4, and the second system contains measures 5 through 8. The melody in the treble clef starts on D4, moves to E4, then F#4, and ends on G4. The bass line in the bass clef starts on D3, moves to E3, then F#3, and ends on G3. Fingering numbers 2, 3, and 4 are indicated above the notes in measures 2, 3, and 4 respectively. The piece concludes with a double bar line at the end of measure 8.

## Example 15

Example 15 is a musical score in 4/4 time, featuring a treble and bass staff. The key signature has one flat (B-flat). The score consists of eight measures, with fingerings indicated by numbers 2, 3, 4, 5, 6, 7, and 8. The melody in the treble staff begins with a half note G4, followed by quarter notes A4, B4, and C5. The bass staff provides a harmonic accompaniment with half notes and quarter notes. The piece concludes with a double bar line at the end of measure 8.

## Example 16

Example 16 is a musical score in 4/4 time, featuring a treble and bass staff. The key signature has one sharp (F-sharp). The score consists of nine measures, with fingerings indicated by numbers 2, 3, 4, 5, 6, 7, 8, and 9. The melody in the treble staff begins with a half note F#4, followed by quarter notes G#4, A4, and B4. The bass staff provides a harmonic accompaniment with half notes and quarter notes. The piece concludes with a double bar line at the end of measure 9.

## Example 17

Example 17 is a musical score in 3/4 time, spanning measures 2 through 8. It consists of two systems, each with a treble and bass staff. The key signature has one flat (B-flat). The notes and fingerings are as follows:

Measure	Treble Staff	Bass Staff
2	C4 (finger 2)	C3 (finger 2)
3	D4 (finger 3)	D3 (finger 3)
4	E4 (finger 4)	E3 (finger 4)
5	F4 (finger 5)	F3 (finger 5)
6	G4 (finger 6)	G3 (finger 6)
7	A4 (finger 7)	A3 (finger 7)
8	B4 (finger 8)	B3 (finger 8)

## Example 18

Example 18 is a musical score in 4/4 time, spanning measures 2 through 8. It consists of two systems, each with a treble and bass staff. The key signature has two flats (B-flat and E-flat). The notes and fingerings are as follows:

Measure	Treble Staff	Bass Staff
2	C4 (finger 2)	C3 (finger 2)
3	D4 (finger 3)	D3 (finger 3)
4	E4 (finger 4)	E3 (finger 4)
5	F4 (finger 5)	F3 (finger 5)
6	G4 (finger 6)	G3 (finger 6)
7	A4 (finger 7)	A3 (finger 7)
8	B4 (finger 8)	B3 (finger 8)

## Example 19

Example 19 shows a musical score in 2/4 time, key of D major (one sharp). The score consists of two systems, each with a treble and bass staff. The first system contains measures 1 through 4, and the second system contains measures 5 through 8. Fingerings are indicated by numbers 2, 3, and 4 above the notes in measures 2, 3, and 4, and by numbers 5, 6, 7, and 8 above the notes in measures 5, 6, 7, and 8. The melody in the treble staff moves stepwise upwards, while the bass line in the bass staff moves stepwise downwards.

## Example 20

Example 20 shows a musical score in 3/4 time, key of D major (one sharp). The score consists of two systems, each with a treble and bass staff. The first system contains measures 1 through 4, and the second system contains measures 5 through 8. Fingerings are indicated by numbers 2, 3, and 4 above the notes in measures 2, 3, and 4, and by numbers 5, 6, 7, and 8 above the notes in measures 5, 6, 7, and 8. The melody in the treble staff moves stepwise upwards, while the bass line in the bass staff moves stepwise downwards.

## Workbook Check Sheet

Name \_\_\_\_\_ Check # \_\_\_\_\_

Grade	Completion	Comprehension
A	All examples are complete.	Student shows clear understanding of all concepts.
B	Most examples are complete.	Student shows clear understanding of all concepts with occasional minor errors.
C	About half the examples are complete.	Student is struggling with some major concepts.
D	Less than half the examples are complete.	Student shows very little understanding of major concepts.
F	Almost no examples have been completed.	No comprehension is evident.

Grade \_\_\_\_\_

Comments:



# Level One Glossary

**Bar Lines** vertical lines in the music which separate it into measures.



---

**Common Time** 4/4 meter



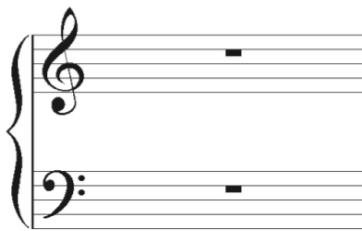
---

**Double Bar** indicates end of a piece of music



---

**Grand Staff** the treble and bass clef combined



**Key Signature** sharps or flats written at the beginning of a staff line to indicate which pitches are to be raised or lowered from their natural state.




---

**Measure** the space between two bar lines

---

**Staff** the 5 horizontal lines upon which music is written; usually including a clef, a time signature, and a key signature




---

**Time Signature** the numbers written on the staff indicating which type of note gets the beat and how many beats are in a measure




---

**Unison** everyone on the same pitch