

# The Practice Room

Learn to Sight Sing.

## Level 4

*Rhythmic Reading*  
*Sight Singing*  
*Two Part Reading*

### 60 Examples

The image shows a musical exercise for two-part reading in 4/4 time, marked with a forte (f) dynamic. The exercise is presented in two systems, each with a treble and bass staff. The key signature has two flats (Bb and Eb). The first system consists of four measures, with numbers 1 through 4 above the notes. The second system consists of four measures, with numbers 5 through 8 above the notes. The notation includes various rhythmic values such as quarter, eighth, and sixteenth notes, as well as rests and repeat signs.

# Rhythmic Reading

## Four

### 20 Exercises

The image displays two systems of musical notation for rhythmic reading exercise 4. Each system consists of a treble clef staff and a bass clef staff, both in 4/4 time. The first system contains four measures, with the first measure of each staff starting with a fermata. The second system also contains four measures, with the first measure of each staff starting with a fermata. The notation includes various rhythmic values such as quarter notes, eighth notes, and sixteenth notes, along with rests and fermatas. The exercise is numbered 4 in the top right corner of the first system and 5 in the top left corner of the second system.

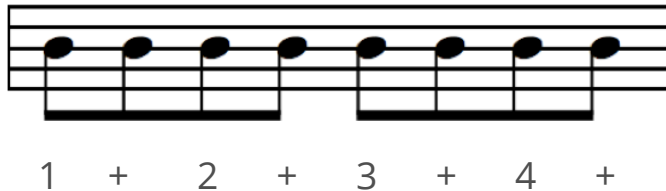
## In Rhythmic Reading Level Four we will cover:

- Quarter Notes followed by Eighth Notes

**Here's the important part to know:** A dot adds half of the value of a note back to the note.

Let's look at the math for the rhythm. One quarter note equals two eighth notes. So since a quarter note is worth one beat, the dot adds half of a beat - or one eighth note.

Let's line up a few dotted quarter notes against some eighth notes to see.



The first dotted quarter gets all of beat one, and the first half of beat 2.

1 + 2

The first eighth note gets the second half of beat 2.

+

Beats 3 and 4 work the same as 1 and 2.

## Example 1

Musical score for Example 1, measures 1-8. The score is in 4/4 time and consists of two systems of two staves each (treble and bass clef). The first system contains measures 1-4, and the second system contains measures 5-8. Fingerings are indicated by numbers 1-4 above notes in the first system and 5-8 above notes in the second system. The piece concludes with a double bar line at the end of measure 8.

## Example 2

Musical score for Example 2, measures 1-8. The score is in 3/4 time and consists of two systems of two staves each (treble and bass clef). The first system contains measures 1-4, and the second system contains measures 5-8. Fingerings are indicated by numbers 1-4 above notes in the first system and 5-8 above notes in the second system. The piece concludes with a double bar line at the end of measure 8.

## Example 3

Musical score for Example 3, measures 1-8. The score is in 2/4 time and consists of two systems of two staves each (treble and bass clef). The first system contains measures 1-4, and the second system contains measures 5-8. Fingerings are indicated by numbers 2, 3, 4, 5, 6, 7, and 8 above the notes.

Measure 1: Treble clef has quarter notes G4, A4, B4; Bass clef has quarter notes G3, A3, B3. Fingering: 2, 3, 4.

Measure 2: Treble clef has dotted quarter note B4, eighth rest; Bass clef has dotted quarter note B3, eighth rest. Fingering: 2.

Measure 3: Treble clef has quarter notes C5, B4; Bass clef has quarter notes C4, B3. Fingering: 3.

Measure 4: Treble clef has half note B4; Bass clef has half note B3. Fingering: 4.

Measure 5: Treble clef has quarter note C5, quarter rest; Bass clef has quarter note C4, quarter rest. Fingering: 5.

Measure 6: Treble clef has quarter note B4, quarter rest; Bass clef has quarter note B3, quarter rest. Fingering: 6.

Measure 7: Treble clef has dotted quarter note A4, eighth rest; Bass clef has dotted quarter note A3, eighth rest. Fingering: 7.

Measure 8: Treble clef has half note G4; Bass clef has half note G3. Fingering: 8.

## Example 4

Musical score for Example 4, measures 1-8. The score is in 4/4 time and consists of two systems of two staves each (treble and bass clef). The first system contains measures 1-4, and the second system contains measures 5-8. Fingerings are indicated by numbers 2, 3, 4, 5, 6, 7, and 8 above the notes.

Measure 1: Treble clef has dotted quarter note G4, eighth rest, quarter note A4, quarter note B4; Bass clef has quarter notes G3, A3, B3. Fingering: 2.

Measure 2: Treble clef has quarter notes C5, B4, A4, G4; Bass clef has quarter notes C4, B3, A3, G3. Fingering: 3.

Measure 3: Treble clef has quarter rest, quarter note G4, quarter note A4, quarter note B4; Bass clef has quarter rest, quarter note G3, quarter note A3, quarter note B3. Fingering: 4.

Measure 4: Treble clef has half note B4; Bass clef has half note B3. Fingering: 4.

Measure 5: Treble clef has quarter note C5, quarter rest, quarter rest, quarter rest; Bass clef has quarter note C4, quarter rest, quarter rest, quarter rest. Fingering: 5.

Measure 6: Treble clef has quarter note B4, quarter rest, quarter rest, quarter rest; Bass clef has quarter note B3, quarter rest, quarter rest, quarter rest. Fingering: 6.

Measure 7: Treble clef has dotted quarter note A4, eighth rest, quarter note G4, quarter note A4, quarter note B4; Bass clef has dotted quarter note A3, eighth rest, quarter note G3, quarter note A3, quarter note B3. Fingering: 7.

Measure 8: Treble clef has dotted quarter note G4, eighth rest, quarter note F4, quarter note G4; Bass clef has dotted quarter note G3, eighth rest, quarter note F3, quarter note G3. Fingering: 8.

## Example 5

Musical score for Example 5, measures 1-8. The score is in 3/4 time and consists of two systems of two staves each (treble and bass clef). The first system contains measures 1-4, and the second system contains measures 5-8. Fingerings are indicated by numbers 2, 3, 4, 5, 6, 7, and 8 above or below notes.

Measure 1: Treble clef has quarter notes G4, A4, B4, quarter note G4. Bass clef has quarter notes G3, A3, B3, quarter note G3. Fingering: 2, 3, 4 above notes; 2, 3, 4 below notes.

Measure 2: Treble clef has quarter note B4, quarter note A4, quarter note G4, quarter note F4. Bass clef has quarter note A3, quarter note G3, quarter note F3, quarter note E3. Fingering: 2, 3, 4 above notes; 2, 3, 4 below notes.

Measure 3: Treble clef has quarter note F4, quarter note E4, quarter note D4, quarter note C4. Bass clef has quarter note D3, quarter note C3, quarter note B2, quarter note A2. Fingering: 2, 3, 4 above notes; 2, 3, 4 below notes.

Measure 4: Treble clef has quarter note B3, quarter note A3, quarter note G3, quarter note F3. Bass clef has quarter note G2, quarter note F2, quarter note E2, quarter note D2. Fingering: 2, 3, 4 above notes; 2, 3, 4 below notes.

Measure 5: Treble clef has quarter note E4, quarter rest, quarter note D4, quarter note C4. Bass clef has quarter note C3, quarter rest, quarter note B2, quarter note A2. Fingering: 5 above notes; 5 below notes.

Measure 6: Treble clef has quarter rest, quarter note B3, quarter note A3, quarter note G3. Bass clef has quarter rest, quarter note G2, quarter note F2, quarter note E2. Fingering: 6 above notes; 6 below notes.

Measure 7: Treble clef has quarter note F3, quarter note E3, quarter note D3, quarter note C3. Bass clef has quarter note D2, quarter note C2, quarter note B1, quarter note A1. Fingering: 7 above notes; 7 below notes.

Measure 8: Treble clef has quarter note B2, quarter note A2, quarter note G2, quarter note F2. Bass clef has quarter note G1, quarter note F1, quarter note E1, quarter note D1. Fingering: 8 above notes; 8 below notes.

## Example 6

Musical score for Example 6, measures 1-8. The score is in 4/4 time and consists of two systems of two staves each (treble and bass clef). The first system contains measures 1-4, and the second system contains measures 5-8. Fingerings are indicated by numbers 2, 3, 4, 5, 6, 7, and 8 above or below notes.

Measure 1: Treble clef has quarter notes G4, A4, B4, quarter note G4. Bass clef has quarter notes G3, A3, B3, quarter note G3. Fingering: 2, 3, 4 above notes; 2, 3, 4 below notes.

Measure 2: Treble clef has quarter note B4, quarter note A4, quarter note G4, quarter note F4. Bass clef has quarter note A3, quarter note G3, quarter note F3, quarter note E3. Fingering: 2, 3, 4 above notes; 2, 3, 4 below notes.

Measure 3: Treble clef has quarter note F4, quarter note E4, quarter note D4, quarter note C4. Bass clef has quarter note D3, quarter note C3, quarter note B2, quarter note A2. Fingering: 2, 3, 4 above notes; 2, 3, 4 below notes.

Measure 4: Treble clef has quarter note B3, quarter note A3, quarter note G3, quarter note F3. Bass clef has quarter note G2, quarter note F2, quarter note E2, quarter note D2. Fingering: 2, 3, 4 above notes; 2, 3, 4 below notes.

Measure 5: Treble clef has quarter note E4, quarter note D4, quarter note C4, quarter rest. Bass clef has quarter note C3, quarter note B2, quarter note A2, quarter rest. Fingering: 5 above notes; 5 below notes.

Measure 6: Treble clef has quarter rest, quarter note B3, quarter note A3, quarter note G3. Bass clef has quarter rest, quarter note G2, quarter note F2, quarter note E2. Fingering: 6 above notes; 6 below notes.

Measure 7: Treble clef has quarter note F3, quarter note E3, quarter note D3, quarter note C3. Bass clef has quarter note D2, quarter note C2, quarter note B1, quarter note A1. Fingering: 7 above notes; 7 below notes.

Measure 8: Treble clef has quarter note B2, quarter note A2, quarter note G2, quarter note F2. Bass clef has quarter note G1, quarter note F1, quarter note E1, quarter note D1. Fingering: 8 above notes; 8 below notes.

## Example 7

Musical score for Example 7, measures 1-8. The score is in 3/4 time and consists of two systems of two staves each (treble and bass clef). The notes are as follows:

Measure	Treble Clef	Bass Clef
1	Rest	Rest
2	B $\dot{2}$	B $\dot{2}$
3	B $\dot{2}$ G $\dot{1}$ F $\dot{1}$	B $\dot{2}$ G $\dot{1}$ F $\dot{1}$
4	B $\dot{2}$ G $\dot{1}$ F $\dot{1}$	B $\dot{2}$ G $\dot{1}$ F $\dot{1}$
5	B $\dot{2}$ G $\dot{1}$ F $\dot{1}$ E $\dot{1}$	B $\dot{2}$ G $\dot{1}$ F $\dot{1}$ E $\dot{1}$
6	B $\dot{2}$ G $\dot{1}$ F $\dot{1}$	B $\dot{2}$ G $\dot{1}$ F $\dot{1}$
7	B $\dot{2}$ G $\dot{1}$ F $\dot{1}$	B $\dot{2}$ G $\dot{1}$ F $\dot{1}$
8	B $\dot{2}$ G $\dot{1}$ F $\dot{1}$	B $\dot{2}$ G $\dot{1}$ F $\dot{1}$

## Example 8

Musical score for Example 8, measures 1-8. The score is in 2/4 time and consists of two systems of two staves each (treble and bass clef). The notes are as follows:

Measure	Treble Clef	Bass Clef
1	B $\dot{2}$ G $\dot{1}$	B $\dot{2}$ G $\dot{1}$
2	B $\dot{2}$ G $\dot{1}$ F $\dot{1}$ E $\dot{1}$	B $\dot{2}$ G $\dot{1}$ F $\dot{1}$ E $\dot{1}$
3	Rest	Rest
4	B $\dot{2}$ G $\dot{1}$	B $\dot{2}$ G $\dot{1}$
5	B $\dot{2}$ G $\dot{1}$ F $\dot{1}$ E $\dot{1}$	B $\dot{2}$ G $\dot{1}$ F $\dot{1}$ E $\dot{1}$
6	B $\dot{2}$ G $\dot{1}$ F $\dot{1}$	B $\dot{2}$ G $\dot{1}$ F $\dot{1}$
7	B $\dot{2}$ G $\dot{1}$ F $\dot{1}$	B $\dot{2}$ G $\dot{1}$ F $\dot{1}$
8	B $\dot{2}$ G $\dot{1}$ F $\dot{1}$	B $\dot{2}$ G $\dot{1}$ F $\dot{1}$

## Example 9

Musical score for Example 9, measures 1-8. The score is in 4/4 time and consists of two systems of two staves each (treble and bass clef). The first system contains measures 1-4, and the second system contains measures 5-8. Fingerings are indicated by numbers 1-5 above notes. Measure 1: Treble clef has a half note G4, a dotted quarter note A4, and an eighth note B4. Bass clef has a half note G3, a dotted quarter note A3, and an eighth note B3. Measure 2: Treble clef has a quarter note B4, a quarter note C5, a quarter note D5, and a quarter note E5. Bass clef has a quarter note G3, a quarter note A3, a quarter note B3, and a quarter note C4. Measure 3: Treble clef has a quarter rest, a quarter note D5, a quarter note E5, and a quarter note F5. Bass clef has a quarter note G3, a quarter note A3, a quarter note B3, and a quarter note C4. Measure 4: Treble clef has a whole rest. Bass clef has a whole note G3. Measure 5: Treble clef has a half note G4, a half note A4. Bass clef has a half note G3, a half note A3. Measure 6: Treble clef has a quarter note B4, a quarter note C5, a quarter note D5, and a quarter note E5. Bass clef has a quarter note G3, a quarter note A3, a quarter note B3, and a quarter note C4. Measure 7: Treble clef has a quarter note F5, a quarter note G5, a quarter note A5, and a quarter note B5. Bass clef has a quarter note G3, a quarter note A3, a quarter note B3, and a quarter note C4. Measure 8: Treble clef has a whole note G4. Bass clef has a whole note G3.

## Example 10

Musical score for Example 10, measures 1-8. The score is in 3/4 time and consists of two systems of two staves each (treble and bass clef). The first system contains measures 1-4, and the second system contains measures 5-8. Fingerings are indicated by numbers 1-5 above notes. Measure 1: Treble clef has a quarter note G4, a quarter note A4, and a quarter note B4. Bass clef has a quarter note G3, a quarter note A3, and a quarter note B3. Measure 2: Treble clef has a quarter note B4, a quarter note C5, and a quarter note D5. Bass clef has a quarter note G3, a quarter note A3, and a quarter note B3. Measure 3: Treble clef has a quarter note E5, a quarter rest, and a quarter note F5. Bass clef has a quarter note G3, a quarter note A3, and a quarter note B3. Measure 4: Treble clef has a whole rest. Bass clef has a whole note G3. Measure 5: Treble clef has a half note G4, a quarter note A4. Bass clef has a half note G3, a quarter note A3. Measure 6: Treble clef has a quarter note B4, a quarter note C5, a quarter note D5, and a quarter note E5. Bass clef has a quarter note G3, a quarter note A3, a quarter note B3, and a quarter note C4. Measure 7: Treble clef has a quarter note F5, a quarter note G5, a quarter note A5, and a quarter note B5. Bass clef has a quarter note G3, a quarter note A3, a quarter note B3, and a quarter note C4. Measure 8: Treble clef has a whole note G4. Bass clef has a whole note G3.

## Workbook Check Sheet

Name \_\_\_\_\_ Check # \_\_\_\_\_

Grade	Completion	Comprehension
A	All examples are complete.	Student shows clear understanding of all concepts.
B	Most examples are complete.	Student shows clear understanding of all concepts with occasional minor errors.
C	About half the examples are complete.	Student is struggling with some major concepts.
D	Less than half the examples are complete.	Student shows very little understanding of major concepts.
F	Almost no examples have been completed.	No comprehension is evident.

Grade \_\_\_\_\_

Comments:

## Example 11

Musical score for Example 11, measures 1-8. The score is in 3/4 time and consists of two systems of two staves each (treble and bass clef). The first system contains measures 1-4, and the second system contains measures 5-8. Fingerings are indicated by numbers 2, 3, and 4 above notes in the first system, and 5, 6, 7, and 8 above notes in the second system.

## Example 12

Musical score for Example 12, measures 1-8. The score is in 4/4 time and consists of two systems of two staves each (treble and bass clef). The first system contains measures 1-4, and the second system contains measures 5-8. Fingerings are indicated by numbers 2, 3, and 4 above notes in the first system, and 5, 6, 7, and 8 above notes in the second system.

## Example 13

Musical score for Example 13, 4/4 time signature. The score consists of two systems of two staves each (treble and bass clef). The first system contains measures 1-4, and the second system contains measures 5-8. Fingerings are indicated by numbers 2, 3, 4, 5, 6, 7, and 8 above the notes.

System 1 (Measures 1-4):  
Measure 1: Treble clef has a half note G4, a quarter note A4, and a quarter note B4. Bass clef has a half note G3, a quarter note A3, and a quarter note B3.  
Measure 2: Treble clef has a quarter note B4, a quarter note C5, a quarter note D5, and a quarter note E5. Bass clef has a quarter note C4, a quarter note D4, a quarter note E4, and a quarter note F4.  
Measure 3: Treble clef has a quarter note E5, a quarter note D5, a quarter note C5, and a quarter note B4. Bass clef has a quarter note G4, a quarter note F4, a quarter note E4, and a quarter note D4.  
Measure 4: Treble clef has a quarter rest, a quarter note B4, and a half rest. Bass clef has a quarter rest, a quarter note B3, and a half rest.

System 2 (Measures 5-8):  
Measure 5: Treble clef has a quarter note B4, a quarter note C5, a quarter note D5, and a quarter note E5. Bass clef has a quarter note G4, a quarter note A4, a quarter note B4, and a quarter note C5.  
Measure 6: Treble clef has a quarter note E5, a quarter note D5, a quarter note C5, and a quarter note B4. Bass clef has a quarter note D5, a quarter note C5, a quarter note B4, and a quarter note A4.  
Measure 7: Treble clef has a quarter note B4, a quarter note A4, a quarter note G4, and a quarter note F4. Bass clef has a quarter note G4, a quarter note F4, a quarter note E4, and a quarter note D4.  
Measure 8: Treble clef has a quarter note E5, a quarter note D5, and a half rest. Bass clef has a quarter note G4, a quarter note F4, and a half rest.

## Example 14

Musical score for Example 14, 3/4 time signature. The score consists of two systems of two staves each (treble and bass clef). The first system contains measures 1-4, and the second system contains measures 5-9. Fingerings are indicated by numbers 2, 3, 4, 5, 6, 7, 8, and 9 above the notes.

System 1 (Measures 1-4):  
Measure 1: Treble clef has a half note G4 and a quarter rest. Bass clef has a half note G3 and a quarter rest.  
Measure 2: Treble clef has a quarter rest, a quarter note A4, and a quarter note B4. Bass clef has a quarter rest, a quarter note A3, and a quarter note B3.  
Measure 3: Treble clef has a quarter note B4, a quarter note C5, and a quarter note D5. Bass clef has a quarter note C4, a quarter note D4, and a quarter note E4.  
Measure 4: Treble clef has a quarter note E5, a quarter note D5, and a quarter note C5. Bass clef has a quarter note G4, a quarter note F4, and a quarter note E4.

System 2 (Measures 5-9):  
Measure 5: Treble clef has a quarter note B4, a quarter note A4, and a quarter note G4. Bass clef has a quarter note G4, a quarter note F4, and a quarter note E4.  
Measure 6: Treble clef has a quarter note F4, a quarter rest, and a quarter rest. Bass clef has a quarter note D4, a quarter rest, and a quarter rest.  
Measure 7: Treble clef has a quarter note E5, a quarter note D5, and a quarter note C5. Bass clef has a quarter note C5, a quarter note B4, and a quarter note A4.  
Measure 8: Treble clef has a quarter note B4, a quarter note A4, and a quarter note G4. Bass clef has a quarter note G4, a quarter note F4, and a quarter note E4.  
Measure 9: Treble clef has a quarter note E5, a quarter note D5, and a half rest. Bass clef has a quarter note G4, a quarter note F4, and a half rest.

## Example 15

Musical score for Example 15, 4/4 time signature. The score consists of two systems of two staves each (treble and bass clef). The first system contains measures 1-4, and the second system contains measures 5-8. Fingerings are indicated by numbers 2, 3, 4, 5, 6, 7, and 8 above the notes.

Measure 1: Treble clef has a quarter note G4, quarter note A4, quarter note B4, quarter note C5. Bass clef has a quarter note G3, quarter note A3, quarter note B3, quarter note C4.

Measure 2: Treble clef has a quarter rest, quarter note B4, quarter note A4, quarter note G4. Bass clef has a quarter note G3, quarter note A3, quarter note B3, quarter note C4.

Measure 3: Treble clef has a quarter rest, quarter note B4, quarter note A4, quarter note G4. Bass clef has a quarter note G3, quarter note A3, quarter note B3, quarter note C4.

Measure 4: Treble clef has a quarter note B4, quarter note A4, quarter note G4, quarter note F4. Bass clef has a quarter note G3, quarter note A3, quarter note B3, quarter note C4.

Measure 5: Treble clef has a quarter note B4, quarter note A4, quarter note G4, quarter note F4. Bass clef has a quarter note G3, quarter note A3, quarter note B3, quarter note C4.

Measure 6: Treble clef has a quarter note B4, quarter note A4, quarter note G4, quarter note F4. Bass clef has a quarter note G3, quarter note A3, quarter note B3, quarter note C4.

Measure 7: Treble clef has a whole note B4. Bass clef has a whole note G3.

Measure 8: Treble clef has a quarter note B4, quarter note A4, quarter note G4. Bass clef has a quarter note G3, quarter note A3, quarter note B3, quarter note C4.

## Example 16

Musical score for Example 16, 3/4 time signature. The score consists of two systems of two staves each (treble and bass clef). The first system contains measures 1-4, and the second system contains measures 5-8. Fingerings are indicated by numbers 2, 3, 4, 5, 6, 7, and 8 above the notes.

Measure 1: Treble clef has a quarter note G4, quarter note A4, quarter note B4. Bass clef has a quarter note G3, quarter note A3, quarter note B3.

Measure 2: Treble clef has a quarter note B4, quarter note A4, quarter note G4. Bass clef has a quarter note G3, quarter note A3, quarter note B3.

Measure 3: Treble clef has a quarter rest, quarter note B4, quarter note A4. Bass clef has a quarter note G3, quarter note A3, quarter note B3.

Measure 4: Treble clef has a quarter note B4, quarter note A4, quarter note G4. Bass clef has a quarter note G3, quarter note A3, quarter note B3.

Measure 5: Treble clef has a quarter note B4, quarter note A4, quarter note G4. Bass clef has a quarter note G3, quarter note A3, quarter note B3.

Measure 6: Treble clef has a quarter note B4, quarter note A4, quarter note G4. Bass clef has a quarter note G3, quarter note A3, quarter note B3.

Measure 7: Treble clef has a quarter note B4, quarter note A4, quarter note G4. Bass clef has a quarter note G3, quarter note A3, quarter note B3.

Measure 8: Treble clef has a quarter note B4, quarter note A4, quarter note G4. Bass clef has a quarter note G3, quarter note A3, quarter note B3.

## Example 17

Musical score for Example 17, measures 1-8. The score is in 4/4 time and consists of two systems of two staves each (treble and bass clef). The first system contains measures 1-4, and the second system contains measures 5-8. Fingerings are indicated by numbers 2, 3, 4, 5, 6, 7, and 8 above the notes.

Measure 1: Treble clef has a half note G4, a half note A4. Bass clef has a half note G3, a half note A3.

Measure 2: Treble clef has a dotted quarter note B4, an eighth note A4, a dotted quarter note G4, an eighth note F4. Bass clef has a dotted quarter note G3, an eighth note F3, a dotted quarter note E3, an eighth note D3.

Measure 3: Treble clef has a half note G4, a half note A4. Bass clef has a half note G3, a half note A3.

Measure 4: Treble clef has a half note G4, a half note A4. Bass clef has a half note G3, a half note A3.

Measure 5: Treble clef has a quarter note G4, a quarter note A4, a quarter note B4, a quarter note A4. Bass clef has a quarter note G3, a quarter note A3, a quarter note B3, a quarter note A3.

Measure 6: Treble clef has a half note G4, a half note A4. Bass clef has a half note G3, a half note A3.

Measure 7: Treble clef has a dotted quarter note B4, an eighth note A4, a dotted quarter note G4, an eighth note F4. Bass clef has a dotted quarter note G3, an eighth note F3, a dotted quarter note E3, an eighth note D3.

Measure 8: Treble clef has a half note G4, a half note A4. Bass clef has a half note G3, a half note A3.

## Example 18

Musical score for Example 18, measures 1-8. The score is in 2/4 time and consists of two systems of two staves each (treble and bass clef). The first system contains measures 1-4, and the second system contains measures 5-8. Fingerings are indicated by numbers 2, 3, 4, 5, 6, 7, and 8 above the notes.

Measure 1: Treble clef has a quarter note G4, a quarter note A4. Bass clef has a quarter note G3, a quarter note A3.

Measure 2: Treble clef has a quarter note B4, a quarter note A4. Bass clef has a quarter note G3, a quarter note A3.

Measure 3: Treble clef has a quarter rest, a quarter rest. Bass clef has a quarter rest, a quarter rest.

Measure 4: Treble clef has a quarter note B4, a quarter note A4. Bass clef has a quarter note G3, a quarter note A3.

Measure 5: Treble clef has a quarter note G4, a quarter note A4. Bass clef has a quarter note G3, a quarter note A3.

Measure 6: Treble clef has a quarter note B4, a quarter note A4. Bass clef has a quarter note G3, a quarter note A3.

Measure 7: Treble clef has a dotted quarter note B4, an eighth note A4, a dotted quarter note G4, an eighth note F4. Bass clef has a dotted quarter note G3, an eighth note F3, a dotted quarter note E3, an eighth note D3.

Measure 8: Treble clef has a quarter note G4, a quarter note A4. Bass clef has a quarter note G3, a quarter note A3.

## Example 19

Musical score for Example 19, measures 1-8. The score is in 3/4 time and consists of two systems of two staves each (treble and bass clef). The first system contains measures 1-4, and the second system contains measures 5-8. Fingerings are indicated by numbers 2, 3, 4, 5, 6, 7, and 8 above the notes.

Measure 1: Treble clef has a half note G4 and a quarter rest. Bass clef has a half note G3 and a quarter rest.

Measure 2: Treble clef has quarter notes A4, B4, and C5. Bass clef has quarter notes G3, A3, and B3.

Measure 3: Treble clef has a dotted quarter note C5 and an eighth note B4. Bass clef has a dotted quarter note C4 and an eighth note B3.

Measure 4: Treble clef has a dotted half note C5. Bass clef has a dotted half note C4.

Measure 5: Treble clef has a quarter rest. Bass clef has a quarter rest.

Measure 6: Treble clef has a dotted quarter note D5 and an eighth note C5. Bass clef has a dotted quarter note D4 and an eighth note C4.

Measure 7: Treble clef has quarter notes E5, D5, and C5. Bass clef has quarter notes E4, D4, and C4.

Measure 8: Treble clef has quarter notes B4, A4, and G4. Bass clef has quarter notes B3, A3, and G3.

## Example 20

Musical score for Example 20, measures 1-8. The score is in 4/4 time and consists of two systems of two staves each (treble and bass clef). The first system contains measures 1-4, and the second system contains measures 5-8. Fingerings are indicated by numbers 2, 3, 4, 5, 6, 7, and 8 above the notes.

Measure 1: Treble clef has quarter notes G4, A4, and B4, followed by a quarter rest. Bass clef has quarter notes G3, A3, and B3, followed by a quarter rest.

Measure 2: Treble clef has a quarter rest, followed by a dotted half note G4. Bass clef has a quarter rest, followed by a dotted half note G3.

Measure 3: Treble clef has quarter notes A4, B4, and C5. Bass clef has quarter notes A3, B3, and C4.

Measure 4: Treble clef has a quarter rest, followed by a dotted half note C5. Bass clef has a quarter rest, followed by a dotted half note C4.

Measure 5: Treble clef has quarter notes D5, C5, B4, and A4. Bass clef has quarter notes D4, C4, B3, and A3.

Measure 6: Treble clef has a dotted quarter note G4 and an eighth note F4. Bass clef has a dotted quarter note G3 and an eighth note F3.

Measure 7: Treble clef has a quarter rest. Bass clef has a quarter rest.

Measure 8: Treble clef has a dotted quarter note G4 and an eighth note F4. Bass clef has a dotted quarter note G3 and an eighth note F3.

## Workbook Check Sheet

Name \_\_\_\_\_ Check # \_\_\_\_\_

Grade	Completion	Comprehension
A	All examples are complete.	Student shows clear understanding of all concepts.
B	Most examples are complete.	Student shows clear understanding of all concepts with occasional minor errors.
C	About half the examples are complete.	Student is struggling with some major concepts.
D	Less than half the examples are complete.	Student shows very little understanding of major concepts.
F	Almost no examples have been completed.	No comprehension is evident.

Grade \_\_\_\_\_

Comments:



## In Sight Singing Level Four we will continue to cover:

- Stepwise Motion Examples will start and end on Do.
- Quarter Notes, Half Notes, Dotted Half Notes, Whole Notes, Pairs of Eighth Notes, Dotted Quarter Notes followed by Eighth Notes
- 4/4, 3/4, and 2/4 time
- C Major, F Major, G Major, D Major, and Bb Major

## We will add:

- Leaps within the tonic triad. (Do-Mi-Sol-Mi-Do)
- Dynamics - Piano and Forte
- Simple Repeat Signs

## Leaps

Up until now, the only leap has been from Sol to Do. Now we'll add in leaps within the tonic chord.

The tonic chord consists of Do, Mi and Sol. So you may see leaps from:

Do > Mi

Mi > Sol

Sol > Mi

Mi > Do

Do > Sol

## Dynamics

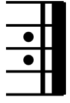
Dynamics refer to the loudness or softness of the music. The composer uses certain words to tell us how loud or soft we should sing.

**Piano** means sing softly. It is marked with a (*p*).

**Forte** means sing loudly. It is marked with an (*f*).

## Repeat Signs

A repeat sign is a double bar line with two dots in front of it.



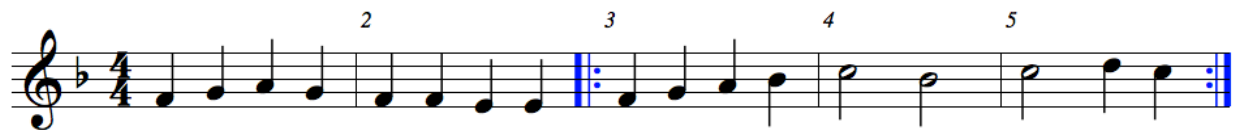
When you see this, you should go back to the beginning or until you find another double bar line with two dots that follow it.

In the example below the repeat sign appears at measure 4.



At that point, you look to see where to repeat back to. Since there are no other double dots, you repeat all the way to the beginning.

In the example below the repeat sign appears at measure 5. There are forward facing double dots at measure 3.



So that means you would sing the measures in this order:

1 2 3 4 5 3 4 5

## Example 1

Musical score for Example 1, measures 1-8. The score is in 4/4 time and marked *f* (forte). It consists of two systems of two staves each (treble and bass clef). The first system contains measures 1-4, and the second system contains measures 5-8. Fingerings are indicated by numbers 1-5 above the notes. Measure 1 starts with a treble clef, a 4/4 time signature, and a forte dynamic marking. The melody in the treble clef consists of quarter notes: C4, D4, E4, F4, G4, A4, B4, C5. The bass clef accompaniment consists of quarter notes: C3, D3, E3, F3, G3, A3, B3, C4. A repeat sign is present after measure 2. Measures 3 and 4 continue the melody and accompaniment. The second system (measures 5-8) continues the piece, with the treble clef melody and bass clef accompaniment following the same rhythmic and melodic patterns as the first system.

## Example 2

Musical score for Example 2, measures 1-8. The score is in 3/4 time and marked *f* (forte). It consists of two systems of two staves each (treble and bass clef). The first system contains measures 1-4, and the second system contains measures 5-8. Fingerings are indicated by numbers 1-5 above the notes. Measure 1 starts with a treble clef, a 3/4 time signature, and a forte dynamic marking. The melody in the treble clef consists of quarter notes: C3, D3, E3, F3, G3, A3, B3, C4. The bass clef accompaniment consists of quarter notes: C2, D2, E2, F2, G2, A2, B2, C3. A repeat sign is present after measure 2. Measures 3 and 4 continue the melody and accompaniment. The second system (measures 5-8) continues the piece, with the treble clef melody and bass clef accompaniment following the same rhythmic and melodic patterns as the first system.

## Example 3

Example 3 is a musical score in 2/4 time, key of D major. It consists of two systems of two staves each. The first system (measures 1-4) is marked *f* (forte). The second system (measures 5-8) is marked *p* (piano). Fingerings are indicated by numbers 1-4 above notes. Measure 6 contains a repeat sign. Measure 7 contains a whole rest in both staves.

## Example 4

Example 4 is a musical score in 4/4 time, key of B-flat major. It consists of two systems of two staves each. The first system (measures 1-4) is marked *p* (piano). The second system (measures 5-8) is also marked *p*. Fingerings are indicated by numbers 1-8 above notes. Measure 6 contains a repeat sign.

## Example 5

Example 5 is a musical score in 3/4 time, featuring two systems of treble and bass staves. The key signature is one sharp (F#). The first system begins with a forte (*f*) dynamic and a piano (*p*) dynamic. The second system continues the piece with a forte (*f*) dynamic. Fingerings are indicated by numbers 2, 3, 4, 5, 6, 7, and 8 above or below notes. The score includes repeat signs and a final double bar line.

## Example 6

Example 6 is a musical score in 3/4 time, featuring two systems of treble and bass staves. The key signature is one sharp (F#). The first system begins with a forte (*f*) dynamic. The second system continues the piece. Fingerings are indicated by numbers 2, 3, 4, 5, 6, 7, and 8 above or below notes. The score includes repeat signs and a final double bar line.

## Example 7

*p*

1 2 3 4

5 6 7 8

## Example 8

*f*

1 2 3 4

5 6 7 8

*p*

## Example 9

Example 9 consists of two systems of musical notation in 2/4 time, key of B-flat major. The first system is marked *f* (forte) and contains four measures. The second system is marked *p* (piano) and contains four measures. Fingerings are indicated by numbers 2, 3, 4, 5, 6, 7, and 8 above or below notes.

**System 1 (Forte):**

- Measure 1: Treble clef, B-flat (quarter), A-flat (quarter), G-flat (quarter), F (quarter). Bass clef, B-flat (quarter), A-flat (quarter), G-flat (quarter), F (quarter).
- Measure 2: Treble clef, G-flat (quarter), F (quarter), E-flat (quarter), D (quarter). Bass clef, E-flat (quarter), D (quarter), C (quarter), B-flat (quarter).
- Measure 3: Treble clef, D (quarter), C (quarter), B-flat (quarter), A-flat (quarter). Bass clef, A-flat (quarter), G-flat (quarter), F (quarter), E-flat (quarter).
- Measure 4: Treble clef, A-flat (quarter), G-flat (quarter), F (quarter), E-flat (quarter). Bass clef, F (quarter), E-flat (quarter), D (quarter), C (quarter).

**System 2 (Piano):**

- Measure 5: Treble clef, B-flat (quarter), A-flat (quarter), G-flat (quarter), F (quarter). Bass clef, B-flat (quarter), A-flat (quarter), G-flat (quarter), F (quarter).
- Measure 6: Treble clef, G-flat (quarter), F (quarter), E-flat (quarter), D (quarter). Bass clef, E-flat (quarter), D (quarter), C (quarter), B-flat (quarter).
- Measure 7: Treble clef, D (quarter), C (quarter), B-flat (quarter), A-flat (quarter). Bass clef, A-flat (quarter), G-flat (quarter), F (quarter), E-flat (quarter).
- Measure 8: Treble clef, A-flat (quarter), G-flat (quarter), F (quarter), E-flat (quarter). Bass clef, F (quarter), E-flat (quarter), D (quarter), C (quarter).

## Example 10

Example 10 consists of two systems of musical notation in 4/4 time, key of D major. The first system is marked *p* (piano) and contains four measures. The second system is marked *f* (forte) and contains four measures. Fingerings are indicated by numbers 2, 3, 4, 5, 6, 7, and 8 above or below notes.

**System 1 (Piano):**

- Measure 1: Treble clef, D (quarter), C (quarter), B (quarter), A (quarter). Bass clef, D (quarter), C (quarter), B (quarter), A (quarter).
- Measure 2: Treble clef, G (quarter), F (quarter), E (quarter), D (quarter). Bass clef, G (quarter), F (quarter), E (quarter), D (quarter).
- Measure 3: Treble clef, C (quarter), B (quarter), A (quarter), G (quarter). Bass clef, C (quarter), B (quarter), A (quarter), G (quarter).
- Measure 4: Treble clef, F (quarter), E (quarter), D (quarter), C (quarter). Bass clef, F (quarter), E (quarter), D (quarter), C (quarter).

**System 2 (Forte):**

- Measure 5: Treble clef, D (quarter), C (quarter), B (quarter), A (quarter). Bass clef, D (quarter), C (quarter), B (quarter), A (quarter).
- Measure 6: Treble clef, G (quarter), F (quarter), E (quarter), D (quarter). Bass clef, G (quarter), F (quarter), E (quarter), D (quarter).
- Measure 7: Treble clef, C (quarter), B (quarter), A (quarter), G (quarter). Bass clef, C (quarter), B (quarter), A (quarter), G (quarter).
- Measure 8: Treble clef, F (quarter), E (quarter), D (quarter), C (quarter). Bass clef, F (quarter), E (quarter), D (quarter), C (quarter).

## Workbook Check Sheet

Name \_\_\_\_\_ Check # \_\_\_\_\_

Grade	Completion	Comprehension
A	All examples are complete.	Student shows clear understanding of all concepts.
B	Most examples are complete.	Student shows clear understanding of all concepts with occasional minor errors.
C	About half the examples are complete.	Student is struggling with some major concepts.
D	Less than half the examples are complete.	Student shows very little understanding of major concepts.
F	Almost no examples have been completed.	No comprehension is evident.

Grade \_\_\_\_\_

Comments:

## Example 11

Example 11 is a musical score in 4/4 time, marked *p* (piano). It consists of two systems of two staves each (treble and bass clef). The first system contains measures 1 through 4, and the second system contains measures 5 through 8. Fingerings are indicated by numbers 2, 3, 4, 5, 6, 7, and 8 above the notes. The piece concludes with a double bar line and repeat dots.

## Example 12

Example 12 is a musical score in 4/4 time, marked *f* (forte). It consists of two systems of two staves each (treble and bass clef). The first system contains measures 1 through 4, and the second system contains measures 5 through 8. Fingerings are indicated by numbers 2, 3, 4, 5, 6, 7, and 8 above the notes. The piece concludes with a double bar line and repeat dots.

## Example 13

Example 13 is a musical score in 3/4 time, key of D major. It consists of two systems of two staves each (treble and bass clef). The first system contains measures 1-4. Measure 1 starts with a piano (*p*) dynamic. Measure 3 starts with a forte (*f*) dynamic. The second system contains measures 5-8. Fingerings are indicated by numbers 1-5 above or below notes. The piece concludes with a double bar line.

## Example 14

Example 14 is a musical score in 4/4 time, key of B-flat major. It consists of two systems of two staves each (treble and bass clef). The first system contains measures 1-4. Measure 1 starts with a forte (*f*) dynamic. The second system contains measures 5-8. Fingerings are indicated by numbers 1-5 above or below notes. The piece concludes with a double bar line.

## Example 15

Example 15 is a musical score in 2/4 time, marked *p* (piano). The key signature has two sharps (F# and C#). The score consists of two systems, each with a treble and bass staff. The first system contains measures 1-4, and the second system contains measures 5-8. Fingerings are indicated by numbers 2, 3, 4 in the first system and 5, 6, 7, 8 in the second system. The melody in the treble staff and the bass line in the bass staff are mirror images of each other. The piece concludes with a double bar line and repeat dots.

## Example 16

Example 16 is a musical score in 3/4 time, marked *f* (forte). The key signature has two sharps (F# and C#). The score consists of two systems, each with a treble and bass staff. The first system contains measures 1-4, and the second system contains measures 5-8. Fingerings are indicated by numbers 2, 3, 4 in the first system and 5, 6, 7, 8 in the second system. The melody in the treble staff and the bass line in the bass staff are mirror images of each other. The piece concludes with a double bar line and repeat dots.

## Example 17

Musical score for Example 17, featuring piano (*p*) dynamics. The score is written in 2/4 time and consists of two systems of two staves each (treble and bass clef). The first system contains measures 1 through 4, with fingerings 2, 3, and 4 indicated above the notes. The second system contains measures 5 through 8, with fingerings 5, 6, 7, and 8 indicated above the notes. The piece concludes with a double bar line.

## Example 18

Musical score for Example 18, featuring forte (*f*) dynamics. The score is written in 4/4 time and consists of two systems of two staves each (treble and bass clef). The first system contains measures 1 through 4, with fingerings 2, 3, and 4 indicated above the notes. The second system contains measures 5 through 8, with fingerings 5, 6, 7, and 8 indicated above the notes. The piece concludes with a double bar line.

## Example 19

Example 19 is a piano exercise in 2/4 time with a key signature of two flats (B-flat and E-flat). It consists of two systems of music, each with a treble and bass staff. The first system begins with a forte (*f*) dynamic. The first staff contains measures 1 through 4, with fingerings 2, 3, and 4 indicated above the notes. The second staff contains measures 1 through 4, with fingerings 2, 3, and 4 indicated above the notes. The second system begins with a piano (*p*) dynamic. The first staff contains measures 5 through 8, with fingerings 5, 6, 7, and 8 indicated above the notes. The second staff contains measures 5 through 8, with fingerings 5, 6, 7, and 8 indicated above the notes. The piece concludes with a double bar line at the end of measure 8.

## Example 20

Example 20 is a piano exercise in 4/4 time with a key signature of two sharps (F-sharp and C-sharp). It consists of two systems of music, each with a treble and bass staff. The first system begins with a piano (*p*) dynamic. The first staff contains measures 1 through 4, with fingerings 2, 3, and 4 indicated above the notes. The second staff contains measures 1 through 4, with fingerings 2, 3, and 4 indicated above the notes. The second system begins with a piano (*p*) dynamic. The first staff contains measures 5 through 8, with fingerings 5, 6, 7, and 8 indicated above the notes. The second staff contains measures 5 through 8, with fingerings 5, 6, 7, and 8 indicated above the notes. The piece concludes with a double bar line at the end of measure 8.

## Workbook Check Sheet

Name \_\_\_\_\_ Check # \_\_\_\_\_

Grade	Completion	Comprehension
A	All examples are complete.	Student shows clear understanding of all concepts.
B	Most examples are complete.	Student shows clear understanding of all concepts with occasional minor errors.
C	About half the examples are complete.	Student is struggling with some major concepts.
D	Less than half the examples are complete.	Student shows very little understanding of major concepts.
F	Almost no examples have been completed.	No comprehension is evident.

Grade \_\_\_\_\_

Comments:

# Two Part Reading Four

## 20 Exercises

Musical score for exercise 4, featuring two staves with treble and bass clefs, 4/4 time signature, and dynamics markings *f* and *p*. The score is divided into two systems, each with four measures. The first system is marked *f* and the second system is marked *p*. The notes are numbered 1 through 8.

System 1 (*f*):

- Measure 1: Treble clef, notes G4, A4, B4, C5. Bass clef, notes G3, A3, B3, C4.
- Measure 2: Treble clef, notes D5, E5, F5, G5. Bass clef, notes D4, E4, F4, G4.
- Measure 3: Treble clef, notes A5, B5, C6, D6. Bass clef, notes A3, B3, C4, D4.
- Measure 4: Treble clef, notes E6, F6, G6, A6. Bass clef, notes E4, F4, G4, A4.

System 2 (*p*):

- Measure 5: Treble clef, notes B5, C6, D6, E6. Bass clef, notes B3, C4, D4, E4.
- Measure 6: Treble clef, notes F6, G6, A6, B6. Bass clef, notes F4, G4, A4, B4.
- Measure 7: Treble clef, notes C7, D7, E7, F7. Bass clef, notes C5, D5, E5, F5.
- Measure 8: Treble clef, notes G7, A7, B7, C8. Bass clef, notes G5, A5, B5, C6.

In Two Part Reading Level 4 we will cover the same material as in Sight Singing Level Four.

We will add two part harmony.

## Example 1

Musical score for Example 1, featuring piano dynamics (*p*) and fingerings 2-4. The score is written in 4/4 time and consists of two systems of two staves each (treble and bass clef). The first system shows the beginning of the piece with a piano dynamic marking. The second system continues the piece, ending with a double bar line. Fingerings are indicated by numbers 2, 3, and 4 above the notes in the treble clef and below the notes in the bass clef.

## Example 2

Musical score for Example 2, featuring forte dynamics (*f*) and fingerings 2-4. The score is written in 3/4 time and consists of two systems of two staves each (treble and bass clef). The first system shows the beginning of the piece with a forte dynamic marking. The second system continues the piece, ending with a double bar line. Fingerings are indicated by numbers 2, 3, and 4 above the notes in the treble clef and below the notes in the bass clef.

## Example 3

Musical score for Example 3, measures 1-8. The score is in 4/4 time, key of D major (one sharp). It consists of two systems of two staves each (treble and bass clef). The first system contains measures 1-4. The second system contains measures 5-8. The first measure is marked *p* (piano) and the third measure is marked *f* (forte). Fingerings are indicated by numbers 1-5 above or below notes. Measure 3 includes a repeat sign. The piece concludes with a double bar line and repeat dots in measure 8.

## Example 4

Musical score for Example 4, measures 1-8. The score is in 2/4 time, key of B-flat major (two flats). It consists of two systems of two staves each (treble and bass clef). The first system contains measures 1-4. The second system contains measures 5-8. The first measure is marked *f* (forte). Fingerings are indicated by numbers 1-5 above or below notes. Measure 3 includes a repeat sign. The piece concludes with a double bar line and repeat dots in measure 8.

## Example 5

Example 5 is a musical score in 3/4 time, marked *p* (piano). It consists of two systems of staves. The first system has a treble and bass staff. The treble staff begins with a quarter note G4, followed by eighth notes A4 and B4, and a quarter note C5. The bass staff begins with a quarter note G3, followed by eighth notes F3 and E3, and a quarter note D3. The second system also has a treble and bass staff. The treble staff begins with eighth notes D5 and C5, followed by a quarter note B4, and eighth notes A4 and G4. The bass staff begins with a quarter note G3, followed by eighth notes F3 and E3, and a quarter note D3. Fingerings are indicated by numbers 2, 3, 4, 5, 6, 7, and 8 above the notes.

## Example 6

Example 6 is a musical score in 3/4 time, marked *p* (piano). It consists of two systems of staves. The first system has a treble and bass staff. The treble staff begins with eighth notes G4 and A4, followed by a quarter note B4, and eighth notes C5 and B4. The bass staff begins with a quarter note G3, followed by eighth notes F3 and E3, and a quarter note D3. The second system also has a treble and bass staff. The treble staff begins with eighth notes D5 and C5, followed by a quarter note B4, and eighth notes A4 and G4. The bass staff begins with eighth notes G3 and F3, followed by a quarter note E3, and eighth notes D3 and C3. Fingerings are indicated by numbers 2, 3, 4, 5, 6, 7, and 8 above the notes.

## Example 7

Example 7 is a musical score in 4/4 time, consisting of two systems of two staves each (treble and bass clef). The first system begins with a forte (*f*) dynamic. The treble staff contains a sequence of eighth notes: G4, A4, B4, C5, D5, E5, F5, G5. The bass staff contains a sequence of eighth notes: G3, F3, E3, D3, C3, B2, A2, G2. The second system begins with a piano (*p*) dynamic. The treble staff contains a sequence of eighth notes: G4, A4, B4, C5, D5, E5, F5, G5. The bass staff contains a sequence of eighth notes: G3, F3, E3, D3, C3, B2, A2, G2. Both systems conclude with a double bar line.

## Example 8

Example 8 is a musical score in 4/4 time, consisting of two systems of two staves each (treble and bass clef). The first system begins with a forte (*f*) dynamic. The treble staff contains a sequence of eighth notes: G4, A4, B4, C5, D5, E5, F5, G5. The bass staff contains a sequence of eighth notes: G3, F3, E3, D3, C3, B2, A2, G2. The second system begins with a piano (*p*) dynamic. The treble staff contains a sequence of eighth notes: G4, A4, B4, C5, D5, E5, F5, G5. The bass staff contains a sequence of eighth notes: G3, F3, E3, D3, C3, B2, A2, G2. Both systems conclude with a double bar line.

## Example 9

Example 9 is a musical score in 3/4 time, featuring a piano (*p*) dynamic. The key signature has two flats (B-flat and E-flat). The score consists of two systems of two staves each (treble and bass clef). The first system contains measures 1 through 4, and the second system contains measures 5 through 8. Fingerings are indicated by numbers 1-4 above notes in the first system and 5-8 above notes in the second system. The piece concludes with a double bar line and repeat dots.

## Example 10

Example 10 is a musical score in 2/4 time, featuring a piano (*p*) dynamic in the first system and a forte (*f*) dynamic in the second system. The key signature has two sharps (F-sharp and C-sharp). The score consists of two systems of two staves each (treble and bass clef). The first system contains measures 1 through 4, and the second system contains measures 5 through 8. Fingerings are indicated by numbers 1-4 above notes in the first system and 5-8 above notes in the second system. The piece concludes with a double bar line and repeat dots.

## Workbook Check Sheet

Name \_\_\_\_\_ Check # \_\_\_\_\_

Grade	Completion	Comprehension
A	All examples are complete.	Student shows clear understanding of all concepts.
B	Most examples are complete.	Student shows clear understanding of all concepts with occasional minor errors.
C	About half the examples are complete.	Student is struggling with some major concepts.
D	Less than half the examples are complete.	Student shows very little understanding of major concepts.
F	Almost no examples have been completed.	No comprehension is evident.

Grade \_\_\_\_\_

Comments:

## Example 11

Musical score for Example 11, featuring piano dynamics (*p*) and a 4/4 time signature. The score consists of two systems of two staves each (treble and bass clef). The first system contains measures 1 through 4, and the second system contains measures 5 through 8. The melody in the treble clef is marked with fingerings 1 through 4 in the first system and 5 through 8 in the second system. The bass clef accompaniment also includes fingerings 1 through 8. The piece concludes with a double bar line and repeat dots.

## Example 12

Musical score for Example 12, featuring forte dynamics (*f*) and a 2/4 time signature. The score consists of two systems of two staves each (treble and bass clef). The first system contains measures 1 through 4, and the second system contains measures 5 through 8. The melody in the treble clef is marked with fingerings 1 through 4 in the first system and 5 through 8 in the second system. The bass clef accompaniment also includes fingerings 1 through 8. The piece concludes with a double bar line and repeat dots.

## Example 13

Example 13 is a musical score in 3/4 time, key of D major. It consists of two systems of two staves each. The first system is marked *p* (piano) and contains measures 1 through 4. The second system is marked *f* (forte) and contains measures 5 through 8. Fingerings are indicated by numbers 1-4 in the first system and 5-8 in the second system. The score features a mix of quarter, eighth, and sixteenth notes, with some rests and repeat signs.

## Example 14

Example 14 is a musical score in 4/4 time, key of B-flat major. It consists of two systems of two staves each. The first system is marked *f* (forte) and contains measures 1 through 4. The second system contains measures 5 through 8. Fingerings are indicated by numbers 1-4 in the first system and 5-8 in the second system. The score features a mix of quarter, eighth, and sixteenth notes, with some rests and repeat signs.

## Example 15

Musical score for Example 15, measures 1-8. The score is in 4/4 time and D major. It consists of two systems of two staves each. The first system (measures 1-4) is marked *p* (piano). The second system (measures 5-8) is marked *5f* (five times forte). Fingerings are indicated by numbers 1-4 in the first system and 5-8 in the second system. The piece concludes with a double bar line.

## Example 16

Musical score for Example 16, measures 1-8. The score is in 3/4 time and D major. It consists of two systems of two staves each. The first system (measures 1-4) is marked *p* (piano). The second system (measures 5-8) is marked *5f* (five times forte). Fingerings are indicated by numbers 1-4 in the first system and 5-8 in the second system. The piece concludes with a double bar line.

## Example 17

Example 17 is a musical score in 3/4 time, featuring a treble and bass clef. The first system (measures 1-4) is marked *f* (forte). The second system (measures 5-8) is marked *5P* (piano). The score includes fingerings 2, 3, 4, 5, 6, 7, and 8. The melody in the treble clef consists of quarter and eighth notes, while the bass clef provides a steady accompaniment of quarter notes.

## Example 18

Example 18 is a musical score in 2/4 time, featuring a treble and bass clef. The score is marked *p* (piano). The melody in the treble clef consists of quarter and eighth notes, while the bass clef provides a steady accompaniment of quarter notes. The score includes fingerings 2, 3, 4, 5, 6, 7, and 8. The piece concludes with a double bar line and repeat dots.

## Example 19

Musical score for Example 19, marked *f* (forte). The piece is in 4/4 time and consists of two systems of two staves each (treble and bass clef). The first system contains measures 1 through 4, and the second system contains measures 5 through 8. Fingerings are indicated by numbers 1-4 and 5-8 above the notes. The key signature has two flats (B-flat and E-flat).

## Example 20

Musical score for Example 20, marked *p* (piano). The piece is in 3/4 time and consists of two systems of two staves each (treble and bass clef). The first system contains measures 1 through 4, and the second system contains measures 5 through 8. Fingerings are indicated by numbers 1-4 and 5-8 above the notes. The key signature has two sharps (F-sharp and C-sharp).

## Workbook Check Sheet

Name \_\_\_\_\_ Check # \_\_\_\_\_

Grade	Completion	Comprehension
A	All examples are complete.	Student shows clear understanding of all concepts.
B	Most examples are complete.	Student shows clear understanding of all concepts with occasional minor errors.
C	About half the examples are complete.	Student is struggling with some major concepts.
D	Less than half the examples are complete.	Student shows very little understanding of major concepts.
F	Almost no examples have been completed.	No comprehension is evident.

Grade \_\_\_\_\_

Comments:

# Level Four Glossary

**Bar Lines** vertical lines in the music which separate it into measures.



---

**Common Time** 4/4 meter



---

**Dynamics** relative loudness or softness

---

**Double Bar** indicates end of a piece of music

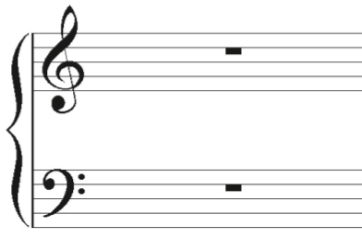


---

**Forte** loud

---

**Grand Staff** the treble and bass clef combined




---

**Key Signature** sharps or flats written at the beginning of a staff line to indicate which pitches are to be raised or lowered from their natural state.




---

**Measure** the space between two bar lines

---

**Piano** soft

---

**Repeat Sign** repeat; play again




---

**Staff** the 5 horizontal lines upon which music is written; usually including a clef, a time signature, and a key signature



**Time Signature** the numbers written on the staff indicating which type of note gets the beat and how many beats are in a measure



---

**Unison** everyone on the same pitch