

The Practice Room

Learn to Sight Sing.

Level 1

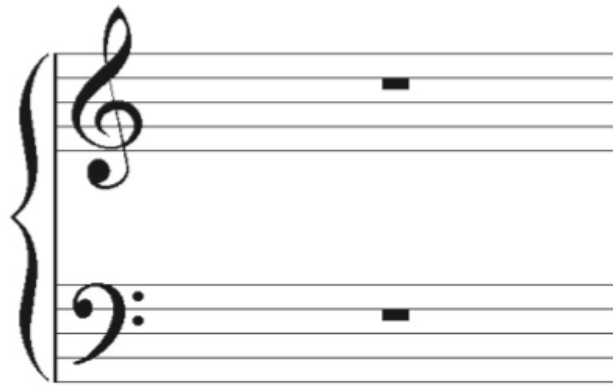
Rhythmic Reading
Sight Singing
Two Part Reading

60 Examples

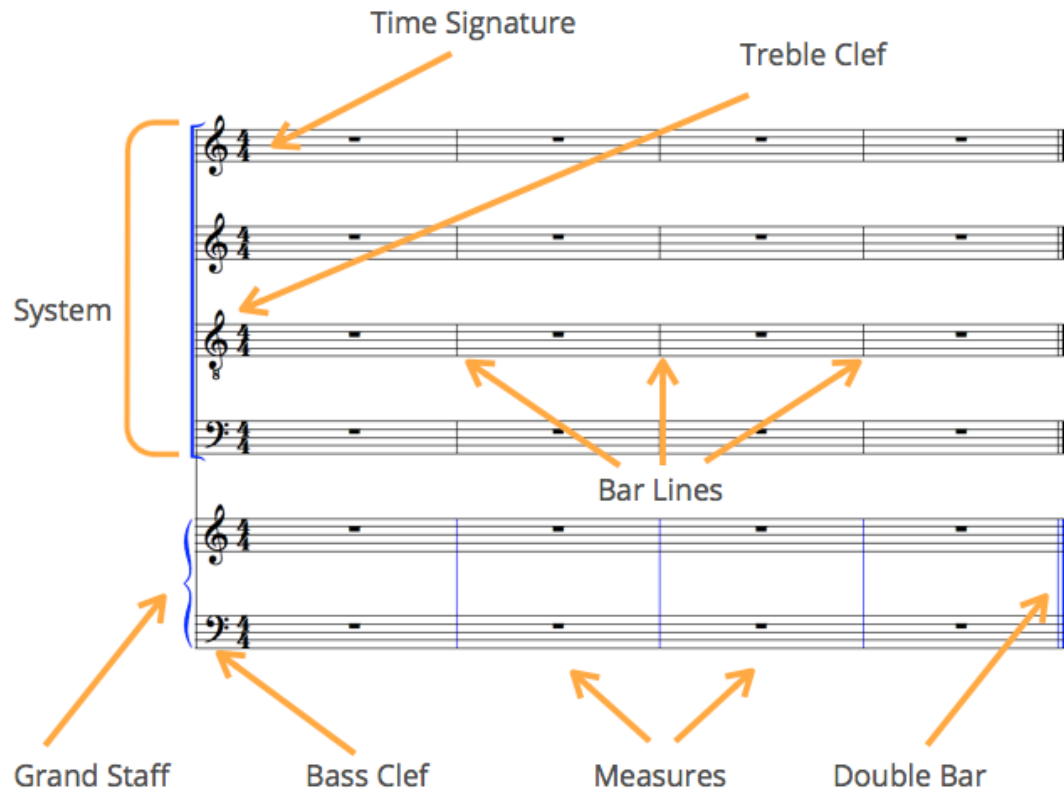


Stuff to know

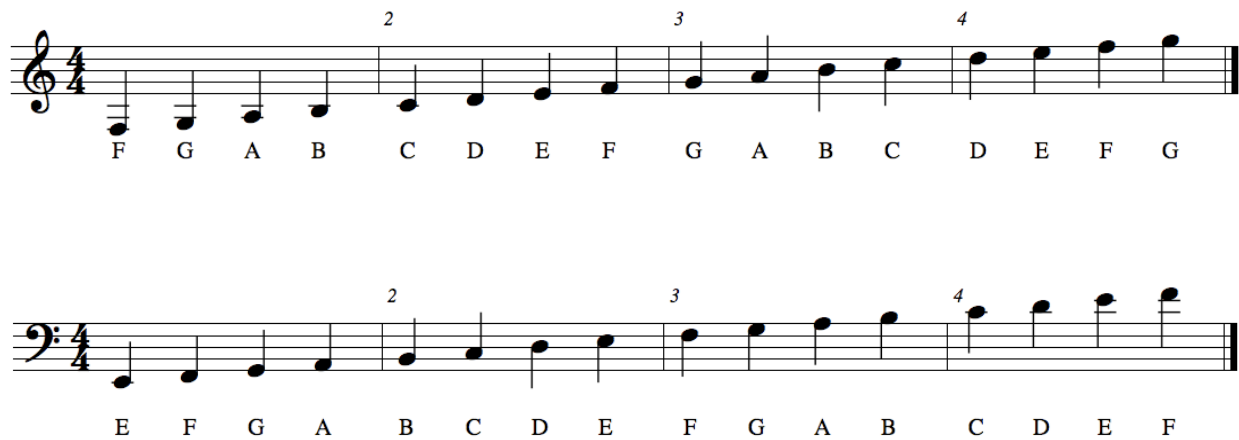
Music Basics



Quick Guide to Sheet Music



Note Names



Basic Count Singing

Count singing can help you understand where you are in time in a piece of music. Here are some basic guidelines.

First look at the time signature. In this book, we'll be focusing on 3 time signatures.



The bottom number means the quarter note gets the beat. The top number tells us how many beats are in a measure.

Count Singing just means we will sing the rhythm we see. If we see four quarter notes we sing:



A half note lasts for two beats, so if we had a measure with one half note and one quarter note, we'd sing:



Notice that I wrote a dash between beats one and two to indicate holding the note lasts for two beats. But we'd still just be singing 1 2 3 4.

Rhythmic Reading One

20 Exercises



In Rhythmic Reading Level One we will cover:

- Quarter Notes
- Half Notes
- Dotted Half Notes
- Whole Notes

The following time signatures will be used:



The four on the bottom represents a quarter. That's the note that "feels" the beat.

The number on the top represents how many beats are in a measure.

Quarter Note = 1 beat



Half Note = 2 beats



Dotted Half Note = 3 beats

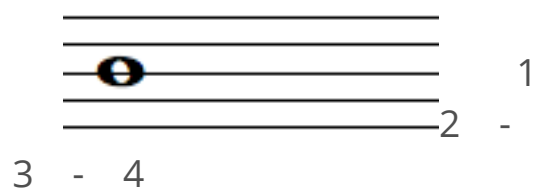
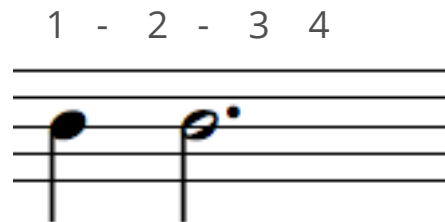
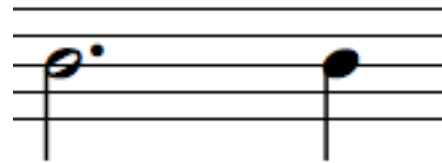


Whole Note = 4 beats



When writing out the counts, use a dash to count notes of longer duration.

Look at the top number to determine the number of beats. Any combination of notes can be used as long as it's not more than the beats indicated in the time signature. Here are some examples of 4/4 time.



1 - 2 - 3 - 4

Example 1

Example 1 shows the first four measures of a piece in 4/4 time. The melody in the treble clef consists of quarter notes: G4 (measure 1), A4 (measure 2), B4 (measure 3), and C5 (measure 4). The bass line in the bass clef consists of quarter notes: G3 (measure 1), A3 (measure 2), B3 (measure 3), and C4 (measure 4). Fingering numbers 2, 3, and 4 are written above the notes in measures 2, 3, and 4 respectively.

Example 2

Example 2 shows the next four measures of the piece. The melody in the treble clef continues with quarter notes: D5 (measure 5), E5 (measure 6), F5 (measure 7), and G5 (measure 8). The bass line continues with quarter notes: D3 (measure 5), E3 (measure 6), F3 (measure 7), and G3 (measure 8). Fingering numbers 5, 6, 7, and 8 are written above the notes in measures 5, 6, 7, and 8 respectively.

Example 3

Example 3 is a musical score in 4/4 time, consisting of two systems of two staves each. The first system contains measures 1 through 4, and the second system contains measures 5 through 8. The melody is written in the treble clef, and the bass line is in the bass clef. Fingerings are indicated by numbers 2 through 8 above the notes.

Measure 1: Treble clef has a half note G4; Bass clef has a half note F3. Fingering: 2 (treble), 2 (bass).

Measure 2: Treble clef has a half note A4; Bass clef has a half note G3. Fingering: 3 (treble), 3 (bass).

Measure 3: Treble clef has a half note B4; Bass clef has a half note A3. Fingering: 4 (treble), 4 (bass).

Measure 4: Treble clef has a half note C5; Bass clef has a half note B3. Fingering: 5 (treble), 5 (bass).

Measure 5: Treble clef has a half note D5; Bass clef has a half note C4. Fingering: 6 (treble), 6 (bass).

Measure 6: Treble clef has a half note E5; Bass clef has a half note D4. Fingering: 7 (treble), 7 (bass).

Measure 7: Treble clef has a half note F5; Bass clef has a half note E4. Fingering: 8 (treble), 8 (bass).

Measure 8: Treble clef has a half note G5; Bass clef has a half note F4. Fingering: 9 (treble), 9 (bass).

Example 4

Example 4 is a musical score in 4/4 time, consisting of two systems of two staves each. The first system contains measures 1 through 4, and the second system contains measures 5 through 8. The melody is written in the treble clef, and the bass line is in the bass clef. Fingerings are indicated by numbers 2 through 8 above the notes.

Measure 1: Treble clef has a half note G4; Bass clef has a half note F3. Fingering: 2 (treble), 2 (bass).

Measure 2: Treble clef has a half note A4; Bass clef has a half note G3. Fingering: 3 (treble), 3 (bass).

Measure 3: Treble clef has a half note B4; Bass clef has a half note A3. Fingering: 4 (treble), 4 (bass).

Measure 4: Treble clef has a half note C5; Bass clef has a half note B3. Fingering: 5 (treble), 5 (bass).

Measure 5: Treble clef has a half note D5; Bass clef has a half note C4. Fingering: 6 (treble), 6 (bass).

Measure 6: Treble clef has a half note E5; Bass clef has a half note D4. Fingering: 7 (treble), 7 (bass).

Measure 7: Treble clef has a half note F5; Bass clef has a half note E4. Fingering: 8 (treble), 8 (bass).

Measure 8: Treble clef has a half note G5; Bass clef has a half note F4. Fingering: 9 (treble), 9 (bass).

Example 5

Example 5 is a musical score in 3/4 time, consisting of two systems of two staves each. The first system contains measures 1 through 4, and the second system contains measures 5 through 8. The melody is written in the treble clef, and the bass line is in the bass clef. The key signature is one flat (B-flat). The melody consists of quarter notes in measures 1-3, followed by a dotted half note in measure 4. The bass line consists of quarter notes in measures 1-3, followed by a dotted half note in measure 4. Fingerings are indicated by numbers 2, 3, and 4 above the notes in measures 1-4, and 5, 6, 7, and 8 above the notes in measures 5-8.

Example 6

Example 6 is a musical score in 3/4 time, consisting of two systems of two staves each. The first system contains measures 1 through 4, and the second system contains measures 5 through 8. The melody is written in the treble clef, and the bass line is in the bass clef. The key signature is one flat (B-flat). The melody consists of quarter notes in measures 1-3, followed by a dotted half note in measure 4. The bass line consists of quarter notes in measures 1-3, followed by a dotted half note in measure 4. Fingerings are indicated by numbers 2, 3, and 4 above the notes in measures 1-4, and 5, 6, 7, and 8 above the notes in measures 5-8.

Example 7

Example 7 is an 8-measure exercise in 2/4 time. The melody in the treble clef consists of half notes: G4 (measure 1), A4 (measure 2), B4 (measure 3), and C5 (measure 4). The bass line in the bass clef consists of half notes: G3 (measure 1), A3 (measure 2), B3 (measure 3), and C4 (measure 4). Measures 5 through 8 are identical to measures 1 through 4, respectively, with the melody continuing to D5 in measure 5 and the bass line continuing to D3 in measure 5. The piece concludes with a double bar line at the end of measure 8.

Example 8

Example 8 is an 8-measure exercise in 2/4 time. The melody in the treble clef consists of half notes: G4 (measure 1), A4 (measure 2), B4 (measure 3), and C5 (measure 4). The bass line in the bass clef consists of half notes: G3 (measure 1), A3 (measure 2), B3 (measure 3), and C4 (measure 4). Measures 5 through 8 are identical to measures 1 through 4, respectively, with the melody continuing to D5 in measure 5 and the bass line continuing to D3 in measure 5. The piece concludes with a double bar line at the end of measure 8.

Example 9

Example 9 is an 8-measure exercise in 4/4 time, presented in two systems. The first system contains measures 1 through 4, and the second system contains measures 5 through 8. The music is written for a grand staff (treble and bass clefs). The melody in the treble clef consists of quarter notes, with fingerings 2, 3, and 4 indicated above measures 2, 3, and 4 respectively. The bass line in the bass clef consists of eighth notes, with fingerings 2, 3, and 4 indicated above measures 2, 3, and 4 respectively. The exercise concludes with a double bar line at the end of measure 8.

Example 10

Example 10 is an 8-measure exercise in 4/4 time, presented in two systems. The first system contains measures 1 through 4, and the second system contains measures 5 through 8. The music is written for a grand staff (treble and bass clefs). The melody in the treble clef begins with a whole rest in measure 1, followed by quarter notes in measures 2 through 4. The bass line in the bass clef begins with a whole rest in measure 1, followed by eighth notes in measures 2 through 4. Fingerings 2, 3, and 4 are indicated above measures 2, 3, and 4 in both staves. The exercise concludes with a double bar line at the end of measure 8.

Workbook Check Sheet

Name _____ Check # _____

Grade	Completion	Comprehension
A	All examples are complete.	Student shows clear understanding of all concepts.
B	Most examples are complete.	Student shows clear understanding of all concepts with occasional minor errors.
C	About half the examples are complete.	Student is struggling with some major concepts.
D	Less than half the examples are complete.	Student shows very little understanding of major concepts.
F	Almost no examples have been completed.	No comprehension is evident.

Grade _____

Comments:

Example 11

Example 11 shows a musical score in 4/4 time, measures 2 through 8. The score is written for two staves, Treble and Bass. The key signature is one flat (B-flat). The melody in the Treble staff begins with a whole rest in measure 2, followed by a half note B-flat in measure 3, and then a quarter note sequence: A-flat, G, F, E, D, C in measures 4 through 7, ending with a whole note C in measure 8. The bass line in the Bass staff begins with a whole rest in measure 2, followed by a half note B-flat in measure 3, and then a quarter note sequence: A-flat, G, F, E, D, C in measures 4 through 7, ending with a whole note C in measure 8. The measures are numbered 2 through 8 above the Treble staff and below the Bass staff.

Example 12

Example 12 shows a musical score in 4/4 time, measures 2 through 8. The score is written for two staves, Treble and Bass. The key signature is one flat (B-flat). The melody in the Treble staff begins with a quarter note sequence: B-flat, A-flat, G, F, E, D, C in measures 2 through 7, ending with a half note C in measure 8. The bass line in the Bass staff begins with a quarter note sequence: B-flat, A-flat, G, F, E, D, C in measures 2 through 7, ending with a half note C in measure 8. The measures are numbered 2 through 8 above the Treble staff and below the Bass staff.

Example 13

Example 13 is a musical score in 2/4 time, consisting of two systems of two staves each. The first system contains measures 1 through 4, and the second system contains measures 5 through 8. The melody is written in the treble clef, and the bass line is in the bass clef. Fingerings are indicated by numbers 2, 3, and 4 above the notes in the first system, and 5, 6, 7, and 8 above the notes in the second system. The piece concludes with a double bar line at the end of measure 8.

Example 14

Example 14 is a musical score in 3/4 time, consisting of two systems of two staves each. The first system contains measures 1 through 4, and the second system contains measures 5 through 8. The melody is written in the treble clef, and the bass line is in the bass clef. Fingerings are indicated by numbers 2, 3, and 4 above the notes in the first system, and 5, 6, 7, and 8 above the notes in the second system. The piece concludes with a double bar line at the end of measure 8.

Example 15

Example 15 is an 8-measure exercise in 4/4 time. The melody in the treble clef consists of quarter notes: C4 (measure 1), D4 (measure 2), E4 (measure 3), F4 (measure 4), G4 (measure 5), A4 (measure 6), B4 (measure 7), and C5 (measure 8). The bass line in the bass clef consists of quarter notes: C3 (measure 1), D3 (measure 2), E3 (measure 3), F3 (measure 4), G3 (measure 5), A3 (measure 6), B3 (measure 7), and C4 (measure 8). Fingerings are indicated by numbers 1-5 above the notes.

Example 16

Example 16 is an 8-measure exercise in 4/4 time. The melody in the treble clef consists of quarter notes: C4 (measure 1), D4 (measure 2), E4 (measure 3), F4 (measure 4), G4 (measure 5), A4 (measure 6), B4 (measure 7), and C5 (measure 8). The bass line in the bass clef consists of quarter notes: C3 (measure 1), D3 (measure 2), E3 (measure 3), F3 (measure 4), G3 (measure 5), A3 (measure 6), B3 (measure 7), and C4 (measure 8). Fingerings are indicated by numbers 1-5 above the notes.

Example 17

Example 17 shows the first four measures of a piece in 4/4 time. The melody in the treble clef consists of quarter notes: G4 (measure 1), A4 (measure 2), B4 (measure 3), and C5 (measure 4). The bass line in the bass clef consists of quarter notes: G3 (measure 1), A3 (measure 2), B3 (measure 3), and C4 (measure 4). Fingering numbers 2, 3, and 4 are written above the notes in measures 2, 3, and 4 respectively.

Example 18

Example 18 shows the next four measures of the piece. The melody in the treble clef consists of quarter notes: D4 (measure 5), E4 (measure 6), F4 (measure 7), and G4 (measure 8). The bass line in the bass clef consists of quarter notes: D3 (measure 5), E3 (measure 6), F3 (measure 7), and G3 (measure 8). Fingering numbers 5, 6, 7, and 8 are written above the notes in measures 5, 6, 7, and 8 respectively.

Example 19

Example 19 is a musical score in 2/4 time, consisting of two systems of two staves each. The first system contains measures 1 through 4, and the second system contains measures 5 through 8. The melody is written in the treble clef, and the bass line is in the bass clef. Fingerings are indicated by numbers 2, 3, 4, 5, 6, 7, and 8 above the notes.

Measure 1: Treble clef has a half note G4; Bass clef has a half note G3.

Measure 2: Treble clef has a half note A4; Bass clef has a half note A3.

Measure 3: Treble clef has a half note B4; Bass clef has a half note B3.

Measure 4: Treble clef has a half note C5; Bass clef has a half note C4.

Measure 5: Treble clef has a half note D5; Bass clef has a half note D4.

Measure 6: Treble clef has a half note E5; Bass clef has a half note E4.

Measure 7: Treble clef has a half note F5; Bass clef has a half note F4.

Measure 8: Treble clef has a half note G5; Bass clef has a half note G4.

Example 20

Example 20 is a musical score in 4/4 time, consisting of two systems of two staves each. The first system contains measures 1 through 4, and the second system contains measures 5 through 8. The melody is written in the treble clef, and the bass line is in the bass clef. Fingerings are indicated by numbers 2, 3, 4, 5, 6, 7, and 8 above the notes.

Measure 1: Treble clef has a half note G4; Bass clef has a half note G3.

Measure 2: Treble clef has a half note A4; Bass clef has a half note A3.

Measure 3: Treble clef has a half note B4; Bass clef has a half note B3.

Measure 4: Treble clef has a half note C5; Bass clef has a half note C4.

Measure 5: Treble clef has a half note D5; Bass clef has a half note D4.

Measure 6: Treble clef has a half note E5; Bass clef has a half note E4.

Measure 7: Treble clef has a half note F5; Bass clef has a half note F4.

Measure 8: Treble clef has a half note G5; Bass clef has a half note G4.

Workbook Check Sheet

Name _____ Check # _____

Grade	Completion	Comprehension
A	All examples are complete.	Student shows clear understanding of all concepts.
B	Most examples are complete.	Student shows clear understanding of all concepts with occasional minor errors.
C	About half the examples are complete.	Student is struggling with some major concepts.
D	Less than half the examples are complete.	Student shows very little understanding of major concepts.
F	Almost no examples have been completed.	No comprehension is evident.

Grade _____

Comments:

Sight Singing One

50 Exercises



In Sight Singing Level One we will continue to cover:

- Quarter Notes, Half Notes, Dotted Half Notes, Whole Notes
- 4/4, 3/4, and 2/4 time

We will add:

- Stepwise Motion - the only leap will be from Sol to Do
- C Major, F Major, and G Major
- Examples will start and end on Do.

C Major

Musical notation for the C Major scale in 4/4 time. The scale is written on two staves: Treble and Bass. The notes are: Do (C4), Re (D4), Mi (E4), Fa (F4), Sol (G4), La (A4), Ti (B4), and Do (C5). The notes are written as quarter notes. The Treble staff starts on a middle C (C4) and the Bass staff starts on a middle C (C4). The scale is written in 4/4 time.

F Major

Musical notation for the F Major scale in 4/4 time. The scale is written on two staves: Treble and Bass. The notes are: Do (C4), Re (D4), Mi (E4), Fa (F4), Sol (G4), La (A4), Ti (B4), and Do (C5). The notes are written as quarter notes. The Treble staff starts on a middle C (C4) and the Bass staff starts on a middle C (C4). The scale is written in 4/4 time.

G Major

Musical notation for the G Major scale in 4/4 time. The notation is presented in two staves: Treble Clef (top) and Bass Clef (bottom). The key signature is one sharp (F#). The scale is written as a sequence of eighth notes. Solfège labels (Do, Re, Mi, Fa, Sol, La, To, Do) are placed below the notes on both staves.

Staff	1	2	3	4	5	6	7	8
Treble	Do	Re	Mi	Fa	Sol	La	To	Do
Bass	Do	Re	Mi	Fa	Sol	La	To	Do

Example 1

Example 1 is an 8-measure exercise in 4/4 time, featuring a treble and bass staff. The melody in the treble staff consists of quarter notes: C4 (measure 1), D4 (measure 2), E4 (measure 3), F4 (measure 4), G4 (measure 5), A4 (measure 6), B4 (measure 7), and C5 (measure 8). The bass staff provides a harmonic accompaniment with half notes: C3 (measure 1), F2 (measure 2), B2 (measure 3), D3 (measure 4), F2 (measure 5), B2 (measure 6), D3 (measure 7), and C3 (measure 8). Fingering numbers 2, 3, and 4 are indicated above the notes in measures 2, 3, and 4 of both staves.

Example 2

Example 2 is an 8-measure exercise in 4/4 time, featuring a treble and bass staff. The melody in the treble staff consists of quarter notes: C4 (measure 1), D4 (measure 2), E4 (measure 3), F4 (measure 4), G4 (measure 5), A4 (measure 6), B4 (measure 7), and C5 (measure 8). The bass staff provides a harmonic accompaniment with half notes: C3 (measure 1), F2 (measure 2), B2 (measure 3), D3 (measure 4), F2 (measure 5), B2 (measure 6), D3 (measure 7), and C3 (measure 8). Fingering numbers 2, 3, and 4 are indicated above the notes in measures 2, 3, and 4 of both staves.

Example 3

Example 3 is a musical score in 4/4 time, key of D major (one sharp). It consists of two systems of two staves each. The first system contains measures 1 through 4, and the second system contains measures 5 through 8. Fingerings are indicated by numbers 2, 3, and 4 above the notes in measures 1-4, and 5, 6, 7, and 8 above the notes in measures 5-8. The melody in the treble clef starts on D4 and moves stepwise up to A4 in measure 4, then continues in measure 5. The bass line in the bass clef starts on D3 and moves stepwise up to A3 in measure 4, then continues in measure 5. The piece concludes with a double bar line at the end of measure 8.

Example 4

Example 4 is a musical score in 4/4 time, key of D major (one sharp). It consists of two systems of two staves each. The first system contains measures 1 through 4, and the second system contains measures 5 through 8. Fingerings are indicated by numbers 2, 3, and 4 above the notes in measures 1-4, and 5, 6, 7, and 8 above the notes in measures 5-8. The melody in the treble clef starts on D4 and moves stepwise up to A4 in measure 4, then continues in measure 5. The bass line in the bass clef starts on D3 and moves stepwise up to A3 in measure 4, then continues in measure 5. The piece concludes with a double bar line at the end of measure 8.

Example 5



Example 6



Example 7

Example 7 is an 8-measure exercise in 3/4 time. The melody is written in the treble clef, and the bass line is in the bass clef. The key signature is one flat (B-flat). The notes are as follows:

Measure	Melody (Treble)	Bass (Bass)
1	C4	C4
2	D4	D4
3	E4	E4
4	F4	F4
5	G4	G4
6	A4	A4
7	B4	B4
8	C5	C5

Example 8

Example 8 is an 8-measure exercise in 2/4 time. The melody is written in the treble clef, and the bass line is in the bass clef. The key signature is one flat (B-flat). The notes are as follows:

Measure	Melody (Treble)	Bass (Bass)
1	C4	C4
2	D4	D4
3	E4	E4
4	F4	F4
5	G4	G4
6	A4	A4
7	B4	B4
8	C5	C5

Example 9

Example 9 shows the first four measures of a musical exercise in 2/4 time, key of D major. The exercise is written for two staves, Treble and Bass. The notes and fingerings are as follows:

Measure	Treble Staff	Bass Staff
1	A4 (Finger 1)	A3 (Finger 1)
2	B4 (Finger 2)	B3 (Finger 2)
3	C5 (Finger 3)	C4 (Finger 3)
4	D5 (Finger 4)	D4 (Finger 4)

Example 10

Example 10 shows the first four measures of a musical exercise in 4/4 time, key of D major. The exercise is written for two staves, Treble and Bass. The notes and fingerings are as follows:

Measure	Treble Staff	Bass Staff
1	A4 (Finger 1)	A3 (Finger 1)
2	B4 (Finger 2)	B3 (Finger 2)
3	C5 (Finger 3)	C4 (Finger 3)
4	D5 (Finger 4)	D4 (Finger 4)

Workbook Check Sheet

Name _____ Check # _____

Grade	Completion	Comprehension
A	All examples are complete.	Student shows clear understanding of all concepts.
B	Most examples are complete.	Student shows clear understanding of all concepts with occasional minor errors.
C	About half the examples are complete.	Student is struggling with some major concepts.
D	Less than half the examples are complete.	Student shows very little understanding of major concepts.
F	Almost no examples have been completed.	No comprehension is evident.

Grade _____

Comments:

Example 11

Example 11 shows a musical score for measures 2 through 8. The score is written for two staves, Treble and Bass, in 2/4 time. The key signature is one flat (B-flat). The notes and fingerings are as follows:

Measure	Treble Staff	Bass Staff
2	C4 (Finger 2)	C3 (Finger 2)
3	D4 (Finger 3)	D3 (Finger 3)
4	E4 (Finger 4)	E3 (Finger 4)
5	F4 (Finger 5)	F3 (Finger 5)
6	G4 (Finger 6)	G3 (Finger 6)
7	A4 (Finger 7)	A3 (Finger 7)
8	B4 (Finger 8)	B3 (Finger 8)

Example 12

Example 12 shows a musical score for measures 2 through 8. The score is written for two staves, Treble and Bass, in 3/4 time. The key signature is one flat (B-flat). The notes and fingerings are as follows:

Measure	Treble Staff	Bass Staff
2	C4 (Finger 2)	C3 (Finger 2)
3	D4 (Finger 3)	D3 (Finger 3)
4	E4 (Finger 4)	E3 (Finger 4)
5	F4 (Finger 5)	F3 (Finger 5)
6	G4 (Finger 6)	G3 (Finger 6)
7	A4 (Finger 7)	A3 (Finger 7)
8	B4 (Finger 8)	B3 (Finger 8)

Example 13

Example 13 is a musical score in 4/4 time, featuring a treble and bass staff with a key signature of one sharp (F#). The score consists of eight measures, with fingerings indicated by numbers 2 through 8 above the notes.

Measures 1-4:

- Measure 1: Treble (G4, A4, B4, C5), Bass (G3, A3, B3, C4).
- Measure 2: Treble (D5, C5, B4, A4), Bass (D4, C4, B3, A3).
- Measure 3: Treble (G4, A4, B4, C5), Bass (G3, A3, B3, C4).
- Measure 4: Treble (D5, C5, B4, A4), Bass (D4, C4, B3, A3).

Measures 5-8:

- Measure 5: Treble (G4, A4, B4, C5), Bass (G3, A3, B3, C4).
- Measure 6: Treble (D5, C5, B4, A4), Bass (D4, C4, B3, A3).
- Measure 7: Treble (G4, A4, B4, C5), Bass (G3, A3, B3, C4).
- Measure 8: Treble (D5, C5, B4, A4), Bass (D4, C4, B3, A3).

Example 14

Example 14 is a musical score in 4/4 time, featuring a treble and bass staff with a key signature of one sharp (F#). The score consists of eight measures, with fingerings indicated by numbers 2 through 8 above the notes.

Measures 1-4:

- Measure 1: Treble (G4, A4, B4, C5), Bass (G3, A3, B3, C4).
- Measure 2: Treble (D5, C5, B4, A4), Bass (D4, C4, B3, A3).
- Measure 3: Treble (G4, A4, B4, C5), Bass (G3, A3, B3, C4).
- Measure 4: Treble (D5, C5, B4, A4), Bass (D4, C4, B3, A3).

Measures 5-8:

- Measure 5: Treble (G4, A4, B4, C5), Bass (G3, A3, B3, C4).
- Measure 6: Treble (D5, C5, B4, A4), Bass (D4, C4, B3, A3).
- Measure 7: Treble (G4, A4, B4, C5), Bass (G3, A3, B3, C4).
- Measure 8: Treble (D5, C5, B4, A4), Bass (D4, C4, B3, A3).

Example 15

Example 15 is a musical exercise in 4/4 time, featuring a key signature of one flat (B-flat). The exercise is presented in two systems, each with a treble and bass staff. The first system contains measures 1 through 4, and the second system contains measures 5 through 8. Fingerings are indicated by numbers 1 through 5 above the notes.

Measure 1: Treble staff has a half note B-flat (finger 1) and a half note C (finger 2). Bass staff has a half note B-flat (finger 1) and a half note C (finger 2).

Measure 2: Treble staff has a half note D (finger 2) and a half note E (finger 3). Bass staff has a half note D (finger 2) and a half note E (finger 3).

Measure 3: Treble staff has a half note F (finger 3) and a half note G (finger 4). Bass staff has a half note F (finger 3) and a half note G (finger 4).

Measure 4: Treble staff has a half note A (finger 4) and a half note B-flat (finger 1). Bass staff has a half note A (finger 4) and a half note B-flat (finger 1).

Measure 5: Treble staff has a half note C (finger 1) and a half note D (finger 2). Bass staff has a half note C (finger 1) and a half note D (finger 2).

Measure 6: Treble staff has a half note E (finger 2) and a half note F (finger 3). Bass staff has a half note E (finger 2) and a half note F (finger 3).

Measure 7: Treble staff has a half note G (finger 3) and a half note A (finger 4). Bass staff has a half note G (finger 3) and a half note A (finger 4).

Measure 8: Treble staff has a half note B-flat (finger 1) and a half note C (finger 2). Bass staff has a half note B-flat (finger 1) and a half note C (finger 2).

Example 16

Example 16 is a musical exercise in 2/4 time, featuring a key signature of one sharp (F-sharp). The exercise is presented in two systems, each with a treble and bass staff. The first system contains measures 1 through 4, and the second system contains measures 5 through 8. Fingerings are indicated by numbers 1 through 5 above the notes.

Measure 1: Treble staff has a half note F-sharp (finger 1) and a half note G (finger 2). Bass staff has a half note F-sharp (finger 1) and a half note G (finger 2).

Measure 2: Treble staff has a half note A (finger 2) and a half note B (finger 3). Bass staff has a half note A (finger 2) and a half note B (finger 3).

Measure 3: Treble staff has a half note C (finger 3) and a half note D (finger 4). Bass staff has a half note C (finger 3) and a half note D (finger 4).

Measure 4: Treble staff has a half note E (finger 4) and a half note F-sharp (finger 1). Bass staff has a half note E (finger 4) and a half note F-sharp (finger 1).

Measure 5: Treble staff has a half note G (finger 1) and a half note A (finger 2). Bass staff has a half note G (finger 1) and a half note A (finger 2).

Measure 6: Treble staff has a half note B (finger 2) and a half note C (finger 3). Bass staff has a half note B (finger 2) and a half note C (finger 3).

Measure 7: Treble staff has a half note D (finger 3) and a half note E (finger 4). Bass staff has a half note D (finger 3) and a half note E (finger 4).

Measure 8: Treble staff has a half note F-sharp (finger 1) and a half note G (finger 2). Bass staff has a half note F-sharp (finger 1) and a half note G (finger 2).

Example 17

Example 17 is a musical score in 3/4 time, spanning measures 2 through 8. The score is written for two staves, Treble and Bass. The key signature is one flat (B-flat). The melody in the Treble staff consists of eighth and quarter notes, with fingerings 2, 3, and 4 indicated above measures 2, 3, and 4 respectively. The bass line in the Bass staff consists of quarter notes, with fingerings 2, 3, and 4 indicated above measures 2, 3, and 4 respectively. The piece concludes at measure 8 with a double bar line.

Example 18

Example 18 is a musical score in 4/4 time, spanning measures 2 through 8. The score is written for two staves, Treble and Bass. The key signature is one flat (B-flat). The melody in the Treble staff consists of quarter and eighth notes, with fingerings 2, 3, and 4 indicated above measures 2, 3, and 4 respectively. The bass line in the Bass staff consists of quarter notes, with fingerings 2, 3, and 4 indicated above measures 2, 3, and 4 respectively. The piece concludes at measure 8 with a double bar line.

Example 19

Example 19 shows a musical score in 3/4 time, key of D major (one sharp). The score consists of two systems of two staves each. The first system contains measures 1 through 4, and the second system contains measures 5 through 8. Fingerings are indicated by numbers 2, 3, 4, 5, 6, 7, and 8 above the notes. The melody in the treble clef consists of eighth and quarter notes, while the bass line in the bass clef consists of quarter and half notes. The piece concludes with a double bar line at the end of measure 8.

Example 20

Example 20 shows a musical score in 4/4 time, key of D major (one sharp). The score consists of two systems of two staves each. The first system contains measures 1 through 4, and the second system contains measures 5 through 9. Fingerings are indicated by numbers 2, 3, 4, 5, 6, 7, 8, and 9 above the notes. The melody in the treble clef consists of quarter and eighth notes, while the bass line in the bass clef consists of quarter and half notes. The piece concludes with a double bar line at the end of measure 9.

Workbook Check Sheet

Name _____ Check # _____

Grade	Completion	Comprehension
A	All examples are complete.	Student shows clear understanding of all concepts.
B	Most examples are complete.	Student shows clear understanding of all concepts with occasional minor errors.
C	About half the examples are complete.	Student is struggling with some major concepts.
D	Less than half the examples are complete.	Student shows very little understanding of major concepts.
F	Almost no examples have been completed.	No comprehension is evident.

Grade _____

Comments:

Example 21



Example 22



Example 23



©

Example 24



©

Example 25



©

Example 26



Example 27

Example 27 is a musical score in 2/4 time, consisting of two systems of two staves each. The first system contains measures 1 through 4, and the second system contains measures 5 through 8. The melody is written in the treble clef, and the bass line is in the bass clef. The key signature is one flat (B-flat).

Measures 1-4: The melody starts on G4 (half note), moves to A4 (half note), then B4 (quarter note), A4 (quarter note), and G4 (half note). The bass line starts on G3 (half note), moves to F3 (half note), then G3 (quarter note), F3 (quarter note), and G3 (half note).

Measures 5-8: The melody continues with A4 (half note), B4 (half note), C5 (quarter note), B4 (quarter note), A4 (half note), and G4 (half note). The bass line continues with A3 (half note), B3 (half note), C4 (quarter note), B3 (quarter note), A3 (half note), and G3 (half note).

©

Example 28

Example 28 is a musical score in 2/4 time, consisting of two systems of two staves each. The first system contains measures 1 through 4, and the second system contains measures 5 through 8. The melody is written in the treble clef, and the bass line is in the bass clef. The key signature is one flat (B-flat).

Measures 1-4: The melody starts on G4 (half note), moves to A4 (half note), then B4 (quarter note), A4 (quarter note), and G4 (half note). The bass line starts on G3 (half note), moves to F3 (half note), then G3 (quarter note), F3 (quarter note), and G3 (half note).

Measures 5-8: The melody continues with A4 (half note), B4 (half note), C5 (quarter note), B4 (quarter note), A4 (half note), and G4 (half note). The bass line continues with A3 (half note), B3 (half note), C4 (quarter note), B3 (quarter note), A3 (half note), and G3 (half note).

©

Example 29



©

Example 30



©

Workbook Check Sheet

Name _____ Check # _____

Grade	Completion	Comprehension
A	All examples are complete.	Student shows clear understanding of all concepts.
B	Most examples are complete.	Student shows clear understanding of all concepts with occasional minor errors.
C	About half the examples are complete.	Student is struggling with some major concepts.
D	Less than half the examples are complete.	Student shows very little understanding of major concepts.
F	Almost no examples have been completed.	No comprehension is evident.

Grade _____

Comments:

Example 31



©

Example 32



©

Example 33

Example 33 is a musical score in 2/4 time, consisting of two systems of two staves each. The first system contains measures 1 through 4, and the second system contains measures 5 through 8. The melody is written in the treble clef, and the bass line is in the bass clef. The key signature has one flat (B-flat). The melody consists of quarter notes, with fingerings 2, 3, and 4 indicated above measures 2, 3, and 4 respectively. The bass line consists of half notes and quarter notes.

©

Example 34

Example 34 is a musical score in 3/4 time, consisting of two systems of two staves each. The first system contains measures 1 through 4, and the second system contains measures 5 through 8. The melody is written in the treble clef, and the bass line is in the bass clef. The key signature has one flat (B-flat). The melody consists of quarter notes, with fingerings 2, 3, and 4 indicated above measures 2, 3, and 4 respectively. The bass line consists of half notes and quarter notes.

©

Example 35

Example 35 is a musical score in 2/4 time, key of D major (one sharp). It consists of two systems of two staves each. The first system contains measures 1 through 4. The second system contains measures 5 through 8. The melody is written in the treble clef, and the bass line is in the bass clef. Measure numbers 2, 3, 4, 5, 6, 7, and 8 are indicated above the treble staff. The piece concludes with a double bar line at the end of measure 8.

©

Example 36

Example 36 is a musical score in 4/4 time, key of D major (one sharp). It consists of two systems of two staves each. The first system contains measures 1 through 4. The second system contains measures 5 through 8. The melody is written in the treble clef, and the bass line is in the bass clef. Measure numbers 2, 3, 4, 5, 6, 7, and 8 are indicated above the treble staff. The piece concludes with a double bar line at the end of measure 8.

©

Example 37

Example 37 is a musical score in 2/4 time, featuring a treble and bass staff. The key signature has one flat (B-flat). The melody in the treble staff consists of quarter notes, with fingerings 2, 3, and 4 indicated above measures 2, 3, and 4 respectively. The bass staff provides a simple accompaniment of quarter notes. The score concludes with a double bar line at measure 8.

©

Example 38

Example 38 is a musical score in 3/4 time, featuring a treble and bass staff. The key signature has one sharp (F-sharp). The melody in the treble staff consists of quarter notes, with fingerings 2, 3, and 4 indicated above measures 2, 3, and 4 respectively. The bass staff provides a simple accompaniment of quarter notes. The score concludes with a double bar line at measure 8.

©

Example 39



©

Example 40



©

Workbook Check Sheet

Name _____ Check # _____

Grade	Completion	Comprehension
A	All examples are complete.	Student shows clear understanding of all concepts.
B	Most examples are complete.	Student shows clear understanding of all concepts with occasional minor errors.
C	About half the examples are complete.	Student is struggling with some major concepts.
D	Less than half the examples are complete.	Student shows very little understanding of major concepts.
F	Almost no examples have been completed.	No comprehension is evident.

Grade _____

Comments:

Example 41



©

Example 42



©

Example 43



©

Example 44



Example 45



Example 46



Example 47

Example 47 is a musical score in 4/4 time, key of D major (one sharp). It consists of two systems of two staves each. The first system contains measures 1 through 4, and the second system contains measures 5 through 8. The melody is written in the treble clef, and the bass line is in the bass clef. Measure numbers 2, 3, 4, 5, 6, 7, and 8 are indicated above the treble staff. The piece concludes with a double bar line at the end of measure 8.

©

Example 48

Example 48 is a musical score in 3/4 time, key of D major (one sharp). It consists of two systems of two staves each. The first system contains measures 1 through 4, and the second system contains measures 5 through 8. The melody is written in the treble clef, and the bass line is in the bass clef. Measure numbers 2, 3, 4, 5, 6, 7, and 8 are indicated above the treble staff. The piece concludes with a double bar line at the end of measure 8.

©

Example 49



©

Example 50



©

Workbook Check Sheet

Name _____ Check # _____

Grade	Completion	Comprehension
A	All examples are complete.	Student shows clear understanding of all concepts.
B	Most examples are complete.	Student shows clear understanding of all concepts with occasional minor errors.
C	About half the examples are complete.	Student is struggling with some major concepts.
D	Less than half the examples are complete.	Student shows very little understanding of major concepts.
F	Almost no examples have been completed.	No comprehension is evident.

Grade _____

Comments:

Two Part Reading One

20 Exercises

Two Part Reading One, Exercises 2-8. The exercises are presented in two systems, each with a treble and bass staff. The key signature is one flat (B-flat) and the time signature is 3/4.

Exercise 2: Treble staff: C4 (quarter), D4 (quarter), E4 (half). Bass staff: C3 (quarter), D3 (quarter), E3 (half).

Exercise 3: Treble staff: F4 (quarter), G4 (quarter), A4 (half). Bass staff: F3 (quarter), G3 (quarter), A3 (half).

Exercise 4: Treble staff: B4 (quarter), C5 (quarter), D5 (half). Bass staff: B2 (quarter), C3 (quarter), D3 (half).

Exercise 5: Treble staff: E4 (quarter), F4 (quarter), G4 (half). Bass staff: E3 (quarter), F3 (quarter), G3 (half).

Exercise 6: Treble staff: A4 (quarter), B4 (quarter), C5 (half). Bass staff: A3 (quarter), B3 (quarter), C4 (half).

Exercise 7: Treble staff: D5 (quarter), E5 (quarter), F5 (half). Bass staff: D4 (quarter), E4 (quarter), F4 (half).

Exercise 8: Treble staff: G5 (quarter), A5 (quarter), B5 (half). Bass staff: G4 (quarter), A4 (quarter), B4 (half).

In Two Part Reading we will now sight sing in two part harmony.

Women's voices will be singing the treble clef:



Men's voices will be singing the bass clef:



Both voices will start on Do and both voices will have identical rhythms.

Tip:

Refer to page 3 for help with note names.

Example 1

Example 1 is an 8-measure exercise in 4/4 time, featuring a treble and bass staff. The melody in the treble staff consists of quarter notes: C4, D4, E4, F4, G4, A4, B4, and C5. The bass line in the bass staff consists of quarter notes: C3, D3, E3, F3, G3, A3, B3, and C4. Fingerings are indicated by numbers 1-4 for measures 1-4 and 5-8. The piece concludes with a double bar line at the end of measure 8.

Example 2

Example 2 is an 8-measure exercise in 4/4 time, featuring a treble and bass staff. The melody in the treble staff consists of quarter notes: C4, D4, E4, F4, G4, A4, B4, and C5. The bass line in the bass staff consists of quarter notes: C3, D3, E3, F3, G3, A3, B3, and C4. Fingerings are indicated by numbers 1-4 for measures 1-4 and 5-8. The piece concludes with a double bar line at the end of measure 8.

Example 3

Example 3 shows a musical score in 2/4 time, key of D major (one sharp). The score consists of two systems of two staves each. The first system contains measures 1 through 4, and the second system contains measures 5 through 8. Fingerings are indicated by numbers 2, 3, and 4 above the notes in measures 1-4, and 5, 6, 7, and 8 above the notes in measures 5-8. The melody in the treble clef consists of quarter notes, while the bass line in the bass clef consists of half notes.

Example 4

Example 4 shows a musical score in 3/4 time, key of D major (one sharp). The score consists of two systems of two staves each. The first system contains measures 1 through 4, and the second system contains measures 5 through 8. Fingerings are indicated by numbers 2, 3, and 4 above the notes in measures 1-4, and 5, 6, 7, and 8 above the notes in measures 5-8. The melody in the treble clef consists of quarter notes, while the bass line in the bass clef consists of quarter notes.

Example 5

Example 5 is a musical score in 3/4 time, featuring a treble and bass staff. The key signature has one flat (B-flat). The melody in the treble staff consists of eighth notes, with fingerings 2, 3, and 4 indicated above measures 2, 3, and 4 respectively. The bass staff provides a harmonic accompaniment with half notes, with fingerings 2, 3, and 4 indicated above measures 2, 3, and 4 respectively. The piece concludes with a double bar line at the end of measure 8.

Example 6

Example 6 is a musical score in 4/4 time, featuring a treble and bass staff. The key signature has one sharp (F-sharp). The melody in the treble staff consists of quarter notes, with fingerings 2, 3, and 4 indicated above measures 2, 3, and 4 respectively. The bass staff provides a harmonic accompaniment with half notes, with fingerings 2, 3, and 4 indicated above measures 2, 3, and 4 respectively. The piece concludes with a double bar line at the end of measure 8.

Example 7

Example 7 is a musical score in 2/4 time, spanning measures 2 through 8. The score is written for two staves, Treble and Bass, with a key signature of one flat (B-flat). The melody in the Treble staff consists of quarter notes: G4 (measure 2), A4 (measure 3), B4 (measure 4), and C5 (measure 5). The bass line in the Bass staff consists of quarter notes: G3 (measure 2), A3 (measure 3), B3 (measure 4), and C4 (measure 5). Measures 6 through 8 continue the same pattern, with the Treble staff playing D5, E5, and F5, and the Bass staff playing D4, E4, and F4. The score ends with a double bar line at the end of measure 8.

Example 8

Example 8 is a musical score in 4/4 time, spanning measures 2 through 8. The score is written for two staves, Treble and Bass, with a key signature of one flat (B-flat). The melody in the Treble staff consists of quarter notes: G4 (measure 2), A4 (measure 3), B4 (measure 4), and C5 (measure 5). The bass line in the Bass staff consists of quarter notes: G3 (measure 2), A3 (measure 3), B3 (measure 4), and C4 (measure 5). Measures 6 through 8 continue the same pattern, with the Treble staff playing D5, E5, and F5, and the Bass staff playing D4, E4, and F4. The score ends with a double bar line at the end of measure 8.

Example 9

Example 9 is a musical score in 3/4 time, key of D major (one sharp). It consists of two systems of two staves each. The first system contains measures 1 through 4, and the second system contains measures 5 through 8. The melody is written in the treble clef, and the bass line is in the bass clef. Fingerings are indicated by numbers 2, 3, and 4 above the notes in the first system, and 5, 6, 7, and 8 above the notes in the second system. The piece concludes with a double bar line at the end of measure 8.

Example 10

Example 10 is a musical score in 4/4 time, key of D major (one sharp). It consists of two systems of two staves each. The first system contains measures 1 through 4, and the second system contains measures 5 through 8. The melody is written in the treble clef, and the bass line is in the bass clef. Fingerings are indicated by numbers 2, 3, and 4 above the notes in the first system, and 5, 6, 7, and 8 above the notes in the second system. The piece concludes with a double bar line at the end of measure 8.

Workbook Check Sheet

Name _____ Check # _____

Grade	Completion	Comprehension
A	All examples are complete.	Student shows clear understanding of all concepts.
B	Most examples are complete.	Student shows clear understanding of all concepts with occasional minor errors.
C	About half the examples are complete.	Student is struggling with some major concepts.
D	Less than half the examples are complete.	Student shows very little understanding of major concepts.
F	Almost no examples have been completed.	No comprehension is evident.

Grade _____

Comments:

Example 11



Example 12



Example 13

Example 13 is a musical score in 3/4 time, featuring a treble and bass staff with a key signature of one sharp (F#). The melody in the treble staff consists of eighth notes, while the bass staff provides a steady accompaniment of quarter notes. The first system contains measures 1 through 4, and the second system contains measures 5 through 8. Measure numbers 2, 3, 4, 5, 6, 7, and 8 are indicated above the corresponding notes.

Example 14

Example 14 is a musical score in 4/4 time, featuring a treble and bass staff. The melody in the treble staff consists of quarter notes, while the bass staff provides a steady accompaniment of quarter notes. The first system contains measures 1 through 4, and the second system contains measures 5 through 8. Measure numbers 2, 3, 4, 5, 6, 7, and 8 are indicated above the corresponding notes.

Example 15

Example 15 is a musical score in 4/4 time, featuring a treble and bass staff. The key signature has one flat (B-flat). The score consists of eight measures, with fingerings indicated by numbers 2, 3, 4, 5, 6, 7, and 8. The melody in the treble staff begins with a half note G4, followed by quarter notes A4, B4, and C5. The bass staff provides a harmonic accompaniment with half notes and quarter notes. The piece concludes with a double bar line at the end of measure 8.

Example 16

Example 16 is a musical score in 4/4 time, featuring a treble and bass staff. The key signature has one sharp (F-sharp). The score consists of nine measures, with fingerings indicated by numbers 2, 3, 4, 5, 6, 7, 8, and 9. The melody in the treble staff begins with a half note F#4, followed by quarter notes G#4, A4, and B4. The bass staff provides a harmonic accompaniment with half notes and quarter notes. The piece concludes with a double bar line at the end of measure 9.

Example 17

Example 17 shows a musical score for measures 2 through 8. The score is written for two staves, Treble and Bass, in 3/4 time. The key signature is one flat (B-flat). The melody in the Treble staff consists of quarter notes in measures 2-4 and eighth notes in measures 5-8. The bass line in the Bass staff consists of quarter notes in measures 2-4 and eighth notes in measures 5-8. The measures are numbered 2 through 8 above the Treble staff and below the Bass staff.

Example 18

Example 18 shows a musical score for measures 2 through 8. The score is written for two staves, Treble and Bass, in 4/4 time. The key signature is one flat (B-flat). The melody in the Treble staff consists of quarter notes in measures 2-4 and eighth notes in measures 5-8. The bass line in the Bass staff consists of quarter notes in measures 2-4 and eighth notes in measures 5-8. The measures are numbered 2 through 8 above the Treble staff and below the Bass staff.

Example 19

Example 19 shows a musical score in 2/4 time, key of D major (one sharp). The score consists of two systems, each with a treble and bass staff. The first system contains measures 1 through 4, and the second system contains measures 5 through 8. Fingerings are indicated by numbers 2, 3, 4, 5, 6, 7, and 8 above the notes.

Measure 1: Treble staff has a half note D4; Bass staff has a half note D3.

Measure 2: Treble staff has a quarter note E4 (fingered 2); Bass staff has a quarter note E3 (fingered 2).

Measure 3: Treble staff has a quarter note F#4 (fingered 3); Bass staff has a quarter note F#3 (fingered 3).

Measure 4: Treble staff has a quarter note G4 (fingered 4); Bass staff has a quarter note G3 (fingered 4).

Measure 5: Treble staff has a half note A4 (fingered 5); Bass staff has a half note A3 (fingered 5).

Measure 6: Treble staff has a quarter note B4 (fingered 6); Bass staff has a quarter note B3 (fingered 6).

Measure 7: Treble staff has a quarter note C5 (fingered 7); Bass staff has a quarter note C4 (fingered 7).

Measure 8: Treble staff has a half note D5 (fingered 8); Bass staff has a half note D4 (fingered 8).

Example 20

Example 20 shows a musical score in 3/4 time, key of D major (one sharp). The score consists of two systems, each with a treble and bass staff. The first system contains measures 1 through 4, and the second system contains measures 5 through 8. Fingerings are indicated by numbers 2, 3, 4, 5, 6, 7, and 8 above the notes.

Measure 1: Treble staff has a half note D4 and a quarter rest; Bass staff has a half note D3 and a quarter rest.

Measure 2: Treble staff has a quarter note E4 (fingered 2); Bass staff has a quarter note E3 (fingered 2).

Measure 3: Treble staff has a quarter note F#4 (fingered 3); Bass staff has a quarter note F#3 (fingered 3).

Measure 4: Treble staff has a quarter note G4 (fingered 4); Bass staff has a quarter note G3 (fingered 4).

Measure 5: Treble staff has a half note A4 (fingered 5); Bass staff has a half note A3 (fingered 5).

Measure 6: Treble staff has a quarter note B4 (fingered 6); Bass staff has a quarter note B3 (fingered 6).

Measure 7: Treble staff has a quarter note C5 (fingered 7); Bass staff has a quarter note C4 (fingered 7).

Measure 8: Treble staff has a half note D5 (fingered 8); Bass staff has a half note D4 (fingered 8).

Workbook Check Sheet

Name _____ Check # _____

Grade	Completion	Comprehension
A	All examples are complete.	Student shows clear understanding of all concepts.
B	Most examples are complete.	Student shows clear understanding of all concepts with occasional minor errors.
C	About half the examples are complete.	Student is struggling with some major concepts.
D	Less than half the examples are complete.	Student shows very little understanding of major concepts.
F	Almost no examples have been completed.	No comprehension is evident.

Grade _____

Comments:

Level One Glossary

Bar Lines vertical lines in the music which separate it into measures.



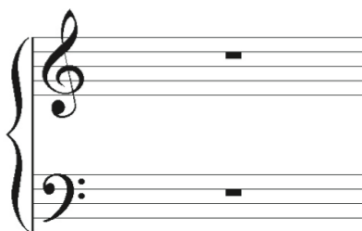
Common Time 4/4 meter



Double Bar indicates end of a piece of music



Grand Staff the treble and bass clef combined



Key Signature sharps or flats written at the beginning of a staff line to indicate which pitches are to be raised or lowered from their natural state.



Measure the space between two bar lines

Staff the 5 horizontal lines upon which music is written; usually including a clef, a time signature, and a key signature



Time Signature the numbers written on the staff indicating which type of note gets the beat and how many beats are in a measure



Unison everyone on the same pitch