

The Practice Room

Learn to Sight Sing.

Level 3

Rhythmic Reading
Sight Singing
Two Part Reading

60 Examples

The image displays two examples of two-part reading exercises in 4/4 time, using a key signature of one flat (Bb). Each example consists of a treble clef staff and a bass clef staff. The first example shows four measures with notes numbered 2, 3, and 4. The second example shows four measures with notes numbered 5, 6, 7, and 8. The exercises are designed to help students practice reading and singing two-part music.

In Rhythmic Reading Level Three we will cover:

- Pairs of eighth notes

It takes two eighth notes to equal to one quarter note.

Quarter Note = 1 beat = Two Eighth Notes = 2 beats

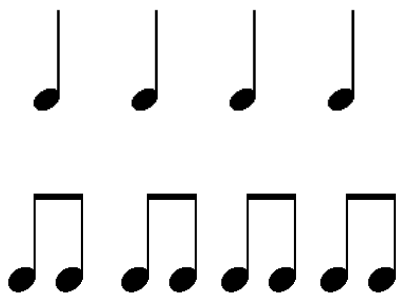


Each of the eighth notes lasts for half of the beat.

If you tap your hand on a table, you'll notice that there is a downbeat (the moment your hand hits the table) and an up beat (the moment your hand is furthest away from the table).

The first eighth note in the pair represents the moment your hand hits the table. The second eighth note represents the moment your hand is furthest from the table.

If we line up 8 eighth notes under 4 quarter notes it would look like this:



So how do we count that? Let's add the counts in:



1 2 3 4



You can see that the first eighth note lines up with the numbers if we were counting only quarter notes. But of course, we aren't. So we need a way to count the second eighth note. We'll use this symbol (+) and when counting aloud, we'll call that (and).



1 + 2 + 3 + 4 +



We would speak that as:

1 and 2 and 3 and 4 and.

Now it's just a question of mixing things up. Here's a few examples to guide you as you practice this section.



1 2 3 + 4 +



1 + 2 + 3 4



1 2 + 3 4 +



1 - 2 3 4 +

You will come across other combinations. Just think it through and work it out based on what you've learned in the other levels.

Example 1

Musical score for Example 1, measures 1-8. The score is in 4/4 time and consists of two systems of two staves each (treble and bass clef). The first system contains measures 1-4, and the second system contains measures 5-8. Fingerings are indicated by numbers 2, 3, 4, 5, 6, 7, and 8 above the notes.

Measure 1: Treble clef has quarter notes G4, A4, B4, C5. Bass clef has quarter notes G3, A3, B3, C4.

Measure 2: Treble clef has quarter notes D5, C5, B4, A4. Bass clef has quarter notes D4, C4, B3, A3.

Measure 3: Treble clef has quarter notes G4, quarter rest, B4, quarter rest. Bass clef has quarter notes G3, quarter rest, B3, quarter rest.

Measure 4: Treble clef has quarter notes A4, B4, C5, B4. Bass clef has quarter notes A3, B3, C4, B3.

Measure 5: Treble clef has quarter notes G4, A4, B4, C5. Bass clef has quarter notes G3, A3, B3, C4.

Measure 6: Treble clef has quarter notes D5, quarter rest, B4, quarter rest. Bass clef has quarter notes D4, quarter rest, B3, quarter rest.

Measure 7: Treble clef has quarter notes A4, B4, C5, B4. Bass clef has quarter notes A3, B3, C4, B3.

Measure 8: Treble clef has quarter notes G4, A4, B4, C5. Bass clef has quarter notes G3, A3, B3, C4.

Example 2

Musical score for Example 2, measures 1-8. The score is in 4/4 time and consists of two systems of two staves each (treble and bass clef). The first system contains measures 1-4, and the second system contains measures 5-8. Fingerings are indicated by numbers 2, 3, 4, 5, 6, 7, and 8 above the notes.

Measure 1: Treble clef has quarter notes G4, A4, B4, C5. Bass clef has quarter notes G3, A3, B3, C4.

Measure 2: Treble clef has quarter notes D5, C5, B4, quarter rest. Bass clef has quarter notes D4, C4, B3, quarter rest.

Measure 3: Treble clef has quarter notes G4, quarter rest, B4, quarter rest. Bass clef has quarter notes G3, quarter rest, B3, quarter rest.

Measure 4: Treble clef has quarter notes A4, B4, C5, B4. Bass clef has quarter notes A3, B3, C4, B3.

Measure 5: Treble clef has quarter notes G4, A4, B4, C5. Bass clef has quarter notes G3, A3, B3, C4.

Measure 6: Treble clef has quarter notes D5, quarter rest, B4, quarter rest. Bass clef has quarter notes D4, quarter rest, B3, quarter rest.

Measure 7: Treble clef has quarter notes A4, B4, C5, B4. Bass clef has quarter notes A3, B3, C4, B3.

Measure 8: Treble clef has quarter notes G4, A4, B4, C5. Bass clef has quarter notes G3, A3, B3, C4.

Example 3

Musical score for Example 3, measures 1-8. The score is in 3/4 time and consists of two systems of two staves each (treble and bass clef). The first system contains measures 1-4, and the second system contains measures 5-8. Fingerings are indicated by numbers 2, 3, 4, 5, 6, 7, and 8 above the notes.

Example 4

Musical score for Example 4, measures 1-8. The score is in 3/4 time and consists of two systems of two staves each (treble and bass clef). The first system contains measures 1-4, and the second system contains measures 5-8. Fingerings are indicated by numbers 2, 3, 4, 5, 6, 7, and 8 above the notes.

Example 5

Musical score for Example 5, measures 2 through 8. The score is in 2/4 time and consists of two systems of two staves each (treble and bass clef). The first system contains measures 2, 3, and 4. The second system contains measures 5, 6, 7, and 8. Fingerings are indicated by numbers 2, 3, 4, 5, 6, 7, and 8 above the notes. Measure 7 in both staves contains a whole rest.

Example 6

Musical score for Example 6, measures 2 through 8. The score is in 4/4 time and consists of two systems of two staves each (treble and bass clef). The first system contains measures 2, 3, and 4. The second system contains measures 5, 6, 7, and 8. Fingerings are indicated by numbers 2, 3, 4, 5, 6, 7, and 8 above the notes. Measure 3 in both staves contains a whole rest.

Example 7

Musical score for Example 7, measures 1-8. The score is in 4/4 time and consists of two systems of two staves each (treble and bass clef). The first system contains measures 1-4, and the second system contains measures 5-8. Fingerings are indicated by numbers 2, 3, 4, 5, 6, 7, and 8 above the notes.

Example 8

Musical score for Example 8, measures 1-8. The score is in 3/4 time and consists of two systems of two staves each (treble and bass clef). The first system contains measures 1-4, and the second system contains measures 5-8. Fingerings are indicated by numbers 2, 3, 4, 5, 6, 7, and 8 above the notes.

Example 9

Musical score for Example 9, measures 1-8. The score is in 2/4 time and consists of two systems of two staves each (treble and bass clef).
 System 1 (Measures 1-4):
 - Measure 1: Treble clef has a quarter note G4, quarter rest; Bass clef has a quarter note G3, quarter rest.
 - Measure 2: Treble clef has a whole rest; Bass clef has a whole rest.
 - Measure 3: Treble clef has a quarter rest, quarter note G4; Bass clef has a quarter rest, quarter note G3.
 - Measure 4: Treble clef has a quarter note G4, quarter rest; Bass clef has a quarter note G3, quarter rest.
 System 2 (Measures 5-8):
 - Measure 5: Treble clef has a quarter rest, quarter note G4; Bass clef has a quarter note G3, quarter rest.
 - Measure 6: Treble clef has a quarter note G4, quarter note A4; Bass clef has a quarter note G3, quarter note A3.
 - Measure 7: Treble clef has a quarter rest, quarter note G4; Bass clef has a quarter rest, quarter note G3.
 - Measure 8: Treble clef has a half note G4; Bass clef has a half note G3.

Example 10

Musical score for Example 10, measures 1-8. The score is in 4/4 time and consists of two systems of two staves each (treble and bass clef).
 System 1 (Measures 1-4):
 - Measure 1: Treble clef has a whole note G4; Bass clef has a whole note G3.
 - Measure 2: Treble clef has a dotted half note G4; Bass clef has a dotted half note G3.
 - Measure 3: Treble clef has a quarter note G4, quarter note A4, quarter note B4; Bass clef has a quarter note G3, quarter note A3, quarter note B3.
 - Measure 4: Treble clef has a whole rest, quarter note G4, quarter note A4; Bass clef has a whole rest, quarter note G3, quarter note A3.
 System 2 (Measures 5-8):
 - Measure 5: Treble clef has a quarter note G4, quarter note A4, quarter note B4; Bass clef has a quarter note G3, quarter note A3, quarter note B3.
 - Measure 6: Treble clef has a quarter note G4, quarter note A4, quarter note B4, quarter rest; Bass clef has a quarter note G3, quarter note A3, quarter note B3, quarter rest.
 - Measure 7: Treble clef has a quarter note G4, whole rest; Bass clef has a quarter note G3, whole rest.
 - Measure 8: Treble clef has a whole note G4; Bass clef has a whole note G3.

Workbook Check Sheet

Name _____ Check # _____

Grade	Completion	Comprehension
A	All examples are complete.	Student shows clear understanding of all concepts.
B	Most examples are complete.	Student shows clear understanding of all concepts with occasional minor errors.
C	About half the examples are complete.	Student is struggling with some major concepts.
D	Less than half the examples are complete.	Student shows very little understanding of major concepts.
F	Almost no examples have been completed.	No comprehension is evident.

Grade _____

Comments:

Example 11

Musical score for Example 11, measures 1-8. The score is in 4/4 time and consists of two systems of two staves each (treble and bass clef). The first system contains measures 1-4, and the second system contains measures 5-8. Fingerings are indicated by numbers 2, 3, and 4 above notes in the first system, and 5, 6, 7, and 8 above notes in the second system.

Example 12

Musical score for Example 12, measures 1-8. The score is in 2/4 time and consists of two systems of two staves each (treble and bass clef). The first system contains measures 1-4, and the second system contains measures 5-8. Fingerings are indicated by numbers 2, 3, and 4 above notes in the first system, and 5, 6, 7, and 8 above notes in the second system.

Example 13

Musical score for Example 13, measures 1-9. The score is in 3/4 time and consists of two systems of two staves each (treble and bass clef). The first system contains measures 1-4, and the second system contains measures 5-9. Fingerings are indicated by numbers 2, 3, 4, 5, 6, 7, 8, and 9 above the notes.

Example 14

Musical score for Example 14, measures 1-8. The score is in 4/4 time and consists of two systems of two staves each (treble and bass clef). The first system contains measures 1-4, and the second system contains measures 5-8. Fingerings are indicated by numbers 2, 3, 4, 5, 6, 7, and 8 above the notes.

Example 15

Musical score for Example 15, measures 1-9. The score is in 4/4 time and consists of two systems of two staves each (treble and bass clef). The first system contains measures 1-4, and the second system contains measures 5-9. Fingerings are indicated by numbers 2, 3, 4, 5, 6, 7, 8, and 9 above or below notes.

Example 16

Musical score for Example 16, measures 1-8. The score is in 3/4 time and consists of two systems of two staves each (treble and bass clef). The first system contains measures 1-4, and the second system contains measures 5-8. Fingerings are indicated by numbers 2, 3, 4, 5, 6, 7, and 8 above or below notes.

Example 17

Musical notation for Example 17, a 2/4 piece. The first system consists of two staves. The treble staff has notes with fingerings 2, 3, and 4. The bass staff has notes with fingerings 2, 3, and 4. The second system also consists of two staves. The treble staff has notes with fingerings 5, 6, 7, and 8. The bass staff has notes with fingerings 5, 6, 7, and 8.

Example 18

Musical notation for Example 18, a 4/4 piece. The first system consists of two staves. The treble staff has notes with fingerings 2, 3, and 4. The bass staff has notes with fingerings 2, 3, and 4. The second system also consists of two staves. The treble staff has notes with fingerings 5, 6, 7, and 8. The bass staff has notes with fingerings 5, 6, 7, and 8.

Example 19

Musical notation for Example 19, measures 2 through 8. The piece is in 4/4 time. The first system contains measures 2, 3, and 4. The second system contains measures 5, 6, 7, and 8. The notation is written for a grand staff (treble and bass clefs). Fingerings are indicated by numbers 2, 3, 4, 5, 6, 7, and 8 above or below the notes.

Example 20

Musical notation for Example 20, measures 1 through 8. The piece is in 3/4 time. The first system contains measures 1, 2, 3, and 4. The second system contains measures 5, 6, 7, and 8. The notation is written for a grand staff (treble and bass clefs). Fingerings are indicated by numbers 2, 3, 4, 5, 6, 7, and 8 above or below the notes.

Workbook Check Sheet

Name _____ Check # _____

Grade	Completion	Comprehension
A	All examples are complete.	Student shows clear understanding of all concepts.
B	Most examples are complete.	Student shows clear understanding of all concepts with occasional minor errors.
C	About half the examples are complete.	Student is struggling with some major concepts.
D	Less than half the examples are complete.	Student shows very little understanding of major concepts.
F	Almost no examples have been completed.	No comprehension is evident.

Grade _____

Comments:

Sight Singing Three

20 Exercises

The image shows two systems of musical notation for exercise 20. Each system consists of a treble clef staff and a bass clef staff, both in 2/4 time. The first system contains four measures of music. The first measure has a treble staff with notes C4, D4, E4, F4 and a bass staff with notes G3, F3, E3, D3. The second measure has a treble staff with notes E4, F4, G4, A4 and a bass staff with notes C4, B3, A3, G3. The third measure has a treble staff with notes G4, A4, B4, C5 and a bass staff with notes F3, E3, D3, C3. The fourth measure has a treble staff with notes A4, G4, F4, E4 and a bass staff with notes B3, A3, G3, F3. The second system also contains four measures. The first measure has a treble staff with notes C4, D4, E4, F4 and a bass staff with notes G3, F3, E3, D3. The second measure has a treble staff with a whole note G4 and a bass staff with a whole note C4. The third measure has a treble staff with a whole note A4 and a bass staff with a whole note D4. The fourth measure has a treble staff with notes G4, F4, E4, D4 and a bass staff with notes C4, B3, A3, G3. The exercise ends with a double bar line.

In Sight Singing Level Three we will continue to cover:

- Eighth Notes (now with pitches)

We will work with all of the things we have learned so far.

- Quarter Notes, Half Notes, Dotted Half Notes, Whole Notes
- Quarter Rests, Half Rests, Whole Rests
- 4/4, 3/4, and 2/4 time
- Stepwise motion - the only leap is from Sol to Do
- C Major, F Major, G Major, Bb Major and D Major
- Examples will start and end on Do.

Example 1

Musical score for Example 1, measures 1-8. The score is in 4/4 time and consists of two systems of two staves each (treble and bass clef). The first system contains measures 1-4, and the second system contains measures 5-8. Fingerings are indicated by numbers 2, 3, and 4 above the notes in the first system, and 5, 6, 7, and 8 above the notes in the second system.

Example 2

Musical score for Example 2, measures 1-8. The score is in 4/4 time and consists of two systems of two staves each (treble and bass clef). The first system contains measures 1-4, and the second system contains measures 5-8. Fingerings are indicated by numbers 2, 3, and 4 above the notes in the first system, and 5, 6, 7, and 8 above the notes in the second system.

Example 3

Musical score for Example 3, measures 1-8. The score is in 3/4 time, key of D major (one sharp), and consists of two systems of two staves each (treble and bass clef). The notes are as follows:

Measure	Treble Clef	Bass Clef
1	G4, A4, B4	G2, A2, B2
2	B4, C5, D5	B2, C3, D3
3	E5, F5, G5	E3, F3, G3
4	A5, B5, C6	A3, B3, C4
5	D6, E6, F6	D4, E4, F4
6	G6, A6, B6	G4, A4, B4
7	C7, D7, E7	C5, D5, E5
8	F7, G7, A7	F5, G5, A5

Example 4

Musical score for Example 4, measures 1-8. The score is in 3/4 time, key of B-flat major (two flats), and consists of two systems of two staves each (treble and bass clef). The notes are as follows:

Measure	Treble Clef	Bass Clef
1	Bb4, C5, D5	Bb2, C3, D3
2	E5, F5, G5	E3, F3, G3
3	A5, Bb6, C6	A3, Bb3, C4
4	D6, Eb6, F6	D4, Eb4, F4
5	G6, Ab6, Bb6	G4, Ab4, Bb4
6	C7, D7, E7	C5, D5, E5
7	F7, G7, A7	F5, G5, A5
8	Bb7, C8, D8	Bb5, C6, D6

Example 5

Musical score for Example 5, measures 1-8. The score is in 4/4 time and D major. It consists of two systems of two staves each (treble and bass clef). The first system contains measures 1-4, and the second system contains measures 5-8. Fingerings are indicated by numbers 1-4 above the notes in measures 1-4, and 5-8 above the notes in measures 5-8. The melody in the treble clef starts on G4 and moves through A4, B4, C5, D5, E5, F#5, G5, A5, B5, C6, D6, E6, F#6, G6, A6, B6, C7, D7, E7, F#7, G7, A7, B7, C8, D8, E8, F#8, G8, A8, B8, C9, D9, E9, F#9, G9, A9, B9, C10, D10, E10, F#10, G10, A10, B10, C11, D11, E11, F#11, G11, A11, B11, C12, D12, E12, F#12, G12, A12, B12, C13, D13, E13, F#13, G13, A13, B13, C14, D14, E14, F#14, G14, A14, B14, C15, D15, E15, F#15, G15, A15, B15, C16, D16, E16, F#16, G16, A16, B16, C17, D17, E17, F#17, G17, A17, B17, C18, D18, E18, F#18, G18, A18, B18, C19, D19, E19, F#19, G19, A19, B19, C20, D20, E20, F#20, G20, A20, B20, C21, D21, E21, F#21, G21, A21, B21, C22, D22, E22, F#22, G22, A22, B22, C23, D23, E23, F#23, G23, A23, B23, C24, D24, E24, F#24, G24, A24, B24, C25, D25, E25, F#25, G25, A25, B25, C26, D26, E26, F#26, G26, A26, B26, C27, D27, E27, F#27, G27, A27, B27, C28, D28, E28, F#28, G28, A28, B28, C29, D29, E29, F#29, G29, A29, B29, C30, D30, E30, F#30, G30, A30, B30, C31, D31, E31, F#31, G31, A31, B31, C32, D32, E32, F#32, G32, A32, B32, C33, D33, E33, F#33, G33, A33, B33, C34, D34, E34, F#34, G34, A34, B34, C35, D35, E35, F#35, G35, A35, B35, C36, D36, E36, F#36, G36, A36, B36, C37, D37, E37, F#37, G37, A37, B37, C38, D38, E38, F#38, G38, A38, B38, C39, D39, E39, F#39, G39, A39, B39, C40, D40, E40, F#40, G40, A40, B40, C41, D41, E41, F#41, G41, A41, B41, C42, D42, E42, F#42, G42, A42, B42, C43, D43, E43, F#43, G43, A43, B43, C44, D44, E44, F#44, G44, A44, B44, C45, D45, E45, F#45, G45, A45, B45, C46, D46, E46, F#46, G46, A46, B46, C47, D47, E47, F#47, G47, A47, B47, C48, D48, E48, F#48, G48, A48, B48, C49, D49, E49, F#49, G49, A49, B49, C50, D50, E50, F#50, G50, A50, B50, C51, D51, E51, F#51, G51, A51, B51, C52, D52, E52, F#52, G52, A52, B52, C53, D53, E53, F#53, G53, A53, B53, C54, D54, E54, F#54, G54, A54, B54, C55, D55, E55, F#55, G55, A55, B55, C56, D56, E56, F#56, G56, A56, B56, C57, D57, E57, F#57, G57, A57, B57, C58, D58, E58, F#58, G58, A58, B58, C59, D59, E59, F#59, G59, A59, B59, C60, D60, E60, F#60, G60, A60, B60, C61, D61, E61, F#61, G61, A61, B61, C62, D62, E62, F#62, G62, A62, B62, C63, D63, E63, F#63, G63, A63, B63, C64, D64, E64, F#64, G64, A64, B64, C65, D65, E65, F#65, G65, A65, B65, C66, D66, E66, F#66, G66, A66, B66, C67, D67, E67, F#67, G67, A67, B67, C68, D68, E68, F#68, G68, A68, B68, C69, D69, E69, F#69, G69, A69, B69, C70, D70, E70, F#70, G70, A70, B70, C71, D71, E71, F#71, G71, A71, B71, C72, D72, E72, F#72, G72, A72, B72, C73, D73, E73, F#73, G73, A73, B73, C74, D74, E74, F#74, G74, A74, B74, C75, D75, E75, F#75, G75, A75, B75, C76, D76, E76, F#76, G76, A76, B76, C77, D77, E77, F#77, G77, A77, B77, C78, D78, E78, F#78, G78, A78, B78, C79, D79, E79, F#79, G79, A79, B79, C80, D80, E80, F#80, G80, A80, B80, C81, D81, E81, F#81, G81, A81, B81, C82, D82, E82, F#82, G82, A82, B82, C83, D83, E83, F#83, G83, A83, B83, C84, D84, E84, F#84, G84, A84, B84, C85, D85, E85, F#85, G85, A85, B85, C86, D86, E86, F#86, G86, A86, B86, C87, D87, E87, F#87, G87, A87, B87, C88, D88, E88, F#88, G88, A88, B88, C89, D89, E89, F#89, G89, A89, B89, C90, D90, E90, F#90, G90, A90, B90, C91, D91, E91, F#91, G91, A91, B91, C92, D92, E92, F#92, G92, A92, B92, C93, D93, E93, F#93, G93, A93, B93, C94, D94, E94, F#94, G94, A94, B94, C95, D95, E95, F#95, G95, A95, B95, C96, D96, E96, F#96, G96, A96, B96, C97, D97, E97, F#97, G97, A97, B97, C98, D98, E98, F#98, G98, A98, B98, C99, D99, E99, F#99, G99, A99, B99, C100, D100, E100, F#100, G100, A100, B100, C101, D101, E101, F#101, G101, A101, B101, C102, D102, E102, F#102, G102, A102, B102, C103, D103, E103, F#103, G103, A103, B103, C104, D104, E104, F#104, G104, A104, B104, C105, D105, E105, F#105, G105, A105, B105, C106, D106, E106, F#106, G106, A106, B106, C107, D107, E107, F#107, G107, A107, B107, C108, D108, E108, F#108, G108, A108, B108, C109, D109, E109, F#109, G109, A109, B109, C110, D110, E110, F#110, G110, A110, B110, C111, D111, E111, F#111, G111, A111, B111, C112, D112, E112, F#112, G112, A112, B112, C113, D113, E113, F#113, G113, A113, B113, C114, D114, E114, F#114, G114, A114, B114, C115, D115, E115, F#115, G115, A115, B115, C116, D116, E116, F#116, G116, A116, B116, C117, D117, E117, F#117, G117, A117, B117, C118, D118, E118, F#118, G118, A118, B118, C119, D119, E119, F#119, G119, A119, B119, C120, D120, E120, F#120, G120, A120, B120, C121, D121, E121, F#121, G121, A121, B121, C122, D122, E122, F#122, G122, A122, B122, C123, D123, E123, F#123, G123, A123, B123, C124, D124, E124, F#124, G124, A124, B124, C125, D125, E125, F#125, G125, A125, B125, C126, D126, E126, F#126, G126, A126, B126, C127, D127, E127, F#127, G127, A127, B127, C128, D128, E128, F#128, G128, A128, B128, C129, D129, E129, F#129, G129, A129, B129, C130, D130, E130, F#130, G130, A130, B130, C131, D131, E131, F#131, G131, A131, B131, C132, D132, E132, F#132, G132, A132, B132, C133, D133, E133, F#133, G133, A133, B133, C134, D134, E134, F#134, G134, A134, B134, C135, D135, E135, F#135, G135, A135, B135, C136, D136, E136, F#136, G136, A136, B136, C137, D137, E137, F#137, G137, A137, B137, C138, D138, E138, F#138, G138, A138, B138, C139, D139, E139, F#139, G139, A139, B139, C140, D140, E140, F#140, G140, A140, B140, C141, D141, E141, F#141, G141, A141, B141, C142, D142, E142, F#142, G142, A142, B142, C143, D143, E143, F#143, G143, A143, B143, C144, D144, E144, F#144, G144, A144, B144, C145, D145, E145, F#145, G145, A145, B145, C146, D146, E146, F#146, G146, A146, B146, C147, D147, E147, F#147, G147, A147, B147, C148, D148, E148, F#148, G148, A148, B148, C149, D149, E149, F#149, G149, A149, B149, C150, D150, E150, F#150, G150, A150, B150, C151, D151, E151, F#151, G151, A151, B151, C152, D152, E152, F#152, G152, A152, B152, C153, D153, E153, F#153, G153, A153, B153, C154, D154, E154, F#154, G154, A154, B154, C155, D155, E155, F#155, G155, A155, B155, C156, D156, E156, F#156, G156, A156, B156, C157, D157, E157, F#157, G157, A157, B157, C158, D158, E158, F#158, G158, A158, B158, C159, D159, E159, F#159, G159, A159, B159, C160, D160, E160, F#160, G160, A160, B160, C161, D161, E161, F#161, G161, A161, B161, C162, D162, E162, F#162, G162, A162, B162, C163, D163, E163, F#163, G163, A163, B163, C164, D164, E164, F#164, G164, A164, B164, C165, D165, E165, F#165, G165, A165, B165, C166, D166, E166, F#166, G166, A166, B166, C167, D167, E167, F#167, G167, A167, B167, C168, D168, E168, F#168, G168, A168, B168, C169, D169, E169, F#169, G169, A169, B169, C170, D170, E170, F#170, G170, A170, B170, C171, D171, E171, F#171, G171, A171, B171, C172, D172, E172, F#172, G172, A172, B172, C173, D173, E173, F#173, G173, A173, B173, C174, D174, E174, F#174, G174, A174, B174, C175, D175, E175, F#175, G175, A175, B175, C176, D176, E176, F#176, G176, A176, B176, C177, D177, E177, F#177, G177, A177, B177, C178, D178, E178, F#178, G178, A178, B178, C179, D179, E179, F#179, G179, A179, B179, C180, D180, E180, F#180, G180, A180, B180, C181, D181, E181, F#181, G181, A181, B181, C182, D182, E182, F#182, G182, A182, B182, C183, D183, E183, F#183, G183, A183, B183, C184, D184, E184, F#184, G184, A184, B184, C185, D185, E185, F#185, G185, A185, B185, C186, D186, E186, F#186, G186, A186, B186, C187, D187, E187, F#187, G187, A187, B187, C188, D188, E188, F#188, G188, A188, B188, C189, D189, E189, F#189, G189, A189, B189, C190, D190, E190, F#190, G190, A190, B190, C191, D191, E191, F#191, G191, A191, B191, C192, D192, E192, F#192, G192, A192, B192, C193, D193, E193, F#193, G193, A193, B193, C194, D194, E194, F#194, G194, A194, B194, C195, D195, E195, F#195, G195, A195, B195, C196, D196, E196, F#196, G196, A196, B196, C197, D197, E197, F#197, G197, A197, B197, C198, D198, E198, F#198, G198, A198, B198, C199, D199, E199, F#199, G199, A199, B199, C200, D200, E200, F#200, G200, A200, B200, C201, D201, E201, F#201, G201, A201, B201, C202, D202, E202, F#202, G202, A202, B202, C203, D203, E203, F#203, G203, A203, B203, C204, D204, E204, F#204, G204, A204, B204, C205, D205, E205, F#205, G205, A205, B205, C206, D206, E206, F#206, G206, A206, B206, C207, D207, E207, F#207, G207, A207, B207, C208, D208, E208, F#208, G208, A208, B208, C209, D209, E209, F#209, G209, A209, B209, C210, D210, E210, F#210, G210, A210, B210, C211, D211, E211, F#211, G211, A211, B211, C212, D212, E212, F#212, G212, A212, B212, C213, D213, E213, F#213, G213, A213, B213, C214, D214, E214, F#214, G214, A214, B214, C215, D215, E215, F#215, G215, A215, B215, C216, D216, E216, F#216, G216, A216, B216, C217, D217, E217, F#217, G217, A217, B217, C218, D218, E218, F#218, G218, A218, B218, C219, D219, E219, F#219, G219, A219, B219, C220, D220, E220, F#220, G220, A220, B220, C221, D221, E221, F#221, G221, A221, B221, C222, D222, E222, F#222, G222, A222, B222, C223, D223, E223, F#223, G223, A223, B223, C224, D224, E224, F#224, G224, A224, B224, C225, D225, E225, F#225, G225, A225, B225, C226, D226, E226, F#226, G226, A226, B226, C227, D227, E227, F#227, G227, A227, B227, C228, D228, E228, F#228, G228, A228, B228, C229, D229, E229, F#229, G229, A229, B229, C230, D230, E230, F#230, G230, A230, B230, C231, D231, E231, F#231, G231, A231, B231, C232, D232, E232, F#232, G232, A232, B232, C233, D233, E233, F#233, G233, A233, B233, C234, D234, E234, F#234, G234, A234, B234, C235, D235, E235, F#235, G235, A235, B235, C236, D236, E236, F#236, G236, A236, B236, C237, D237, E237, F#237, G237, A237, B237, C238, D238, E238, F#238, G238, A238, B238, C239, D239, E239, F#239, G239, A239, B239, C240, D240, E240, F#240, G240, A240, B240, C241, D241, E241, F#241, G241, A241, B241, C242, D242, E242, F#242, G242, A242, B242, C243, D243, E243, F#243, G243, A243, B243, C244, D244, E244, F#244, G244, A244, B244, C245, D245, E245, F#245, G245, A245, B245, C246, D246, E246, F#246, G246, A246, B246, C247, D247, E247, F#247, G247, A247, B247, C248, D248, E248, F#248, G248, A248, B248, C249, D249, E249, F#249, G249, A249, B249, C250, D250, E250, F#250, G250, A250, B250, C251, D251, E251, F#251, G251, A251, B251, C252, D252, E252, F#252, G252, A252, B252, C253, D253, E253, F#253, G253, A253, B253, C254, D254, E254, F#254, G254, A254, B254, C255, D255, E255, F#255, G255, A255, B255, C256, D256, E256, F#256, G256, A256, B256, C257, D257, E257, F#257, G257, A257, B257, C258, D258, E258, F#258, G258, A258, B258, C259, D259, E259, F#259, G259, A259, B259, C260, D260, E260, F#260, G260, A260, B260, C261, D261, E261, F#261, G261, A261, B261, C262, D262, E262, F#262, G262, A262, B262, C263, D263, E263, F#263, G263, A263, B263, C264, D264, E264, F#264, G264, A264, B264, C265, D265, E265, F#265, G265, A265, B265, C266, D266, E266, F#266, G266, A266, B266, C267, D267, E267, F#267, G267, A267, B267, C268, D268, E268, F#268, G268, A268, B268, C269, D269, E269, F#269, G269, A269, B269, C270, D270, E270, F#270, G270, A270, B270, C271, D271, E271, F#271, G271, A271, B271, C272, D272, E272, F#272, G272, A272, B272, C273, D273, E273, F#273, G273, A273, B273, C274, D274, E274, F#274, G274, A274, B274, C275, D275, E275, F#275, G275, A275, B275, C276, D276, E276, F#276, G276, A276, B276, C277, D277, E277, F#277, G277, A277, B277, C278, D278, E278, F#278, G278, A278, B278, C279, D279, E279, F#279, G279, A279, B279, C280, D280, E280, F#280, G280, A280, B280, C281, D281, E281, F#281, G281, A281, B281, C282, D282, E282, F#282, G282, A282, B282, C283, D283, E283, F#283, G283, A283, B283, C284, D284, E284, F#284, G284, A284, B284, C285, D285, E285, F#285, G285, A285, B285, C286, D286, E286, F#286, G286, A286, B286, C287, D287, E287, F#287, G287, A287, B287, C288, D288, E288, F#288, G288, A288, B288, C289, D289, E289, F#289, G289, A289, B289, C290, D290, E290, F#290, G290, A290, B290, C291, D291, E291, F#291, G291, A291, B291, C292, D292, E292, F#292, G292, A292, B292, C293, D293, E293, F#293, G293, A293, B293, C294, D294, E294, F#294, G294, A294, B294, C295, D295, E295, F#295, G295, A295, B295, C296, D296, E296, F#296, G296, A296, B296, C297, D297, E297, F#297, G297, A297, B297, C298, D298, E298, F#298, G298, A298, B298, C299, D299, E299, F#299, G299, A299, B299, C300, D300, E300, F#300, G300, A300, B300, C301, D301, E301, F#301, G301, A301, B301, C302, D302, E302, F#302, G302, A302, B302, C303, D303, E303, F#303, G303, A303, B303, C304, D304, E304, F#304, G304, A304, B304, C305, D305, E305, F#305, G305, A305, B305, C306, D306, E306, F#306, G306, A306, B306, C307, D307, E307, F#307, G307, A307, B307, C308, D308, E308, F#308, G308, A308, B308, C309, D309, E309, F#309, G309, A309, B309, C310, D310, E310, F#310, G310, A310, B310, C311, D311, E311, F#311, G311, A311, B311, C312, D312, E312, F#312, G312, A312, B312, C313, D313, E313, F#313, G313, A313, B313, C314, D314, E314, F#314, G314, A314, B314, C315, D315, E315, F#315, G315, A315, B315, C316, D316, E316, F#316, G316, A316, B316, C317, D317, E317, F#317, G317, A317, B317, C318, D318, E318, F#318, G318, A318, B318, C319, D319, E319, F#319, G319, A319, B319, C320, D320, E320, F#320, G320, A320, B320, C321, D321, E321, F#321, G321, A321, B321, C322, D322, E322, F#322, G322, A322, B322, C323, D323, E323, F#323, G323, A323, B323, C324, D324, E324, F#324, G324, A324, B324, C325, D325, E325, F#325, G325, A325, B325, C326, D326, E326, F#326, G326, A326, B326, C327, D327, E327, F#327, G327, A327, B327, C328, D328, E328, F#328, G328, A328, B328, C329, D329, E329, F#329, G329, A329, B329, C330, D330, E330, F#330, G330, A330, B330, C331, D331, E331, F#331, G331, A331, B331, C332, D332, E332, F#332, G332, A332, B332, C333, D333, E333, F#333, G333, A333, B333, C334, D334, E334, F#334, G334, A334, B334, C335, D335, E335, F#335, G335, A335, B335, C336, D336, E336, F#336, G336, A336, B336, C337, D337, E337, F#337, G337, A337, B337, C338, D338, E338, F#338, G338, A338, B338, C339, D339, E339, F#339, G339, A339, B339, C340, D340, E340, F#340, G340, A340, B340, C341, D341, E341, F#341, G341, A341, B341, C342, D342, E342, F#342, G342, A342, B342, C343, D343, E343, F#343, G343, A343, B343, C344, D344, E344, F#344, G344, A344, B344, C345, D345, E345, F#345, G345, A345, B345, C346, D346, E346, F#346, G346, A346, B346, C347, D347, E347, F#347, G347, A347, B347, C348, D348, E348, F#348, G348, A348, B348, C349, D349, E349, F#349, G349, A349, B349, C350, D350, E350, F#350, G350, A350, B350, C351, D351, E351, F#351, G351, A351, B351, C352, D352, E352, F#352, G352, A352, B352, C353, D353, E353, F#353, G353, A353, B353, C354, D354, E354, F#354, G354, A354, B354, C355, D355, E355, F#355, G355, A355, B355, C356, D356, E356, F#356, G356, A356, B356, C357, D357, E357, F#357, G357, A357, B357, C358, D358, E358, F#358, G358, A358, B358, C359, D359, E359, F#359, G359, A359, B359, C360, D360, E360, F#360, G360, A360, B360, C361, D361, E361, F#361, G361, A361

Example 7

Musical score for Example 7, measures 1-8. The score is in 3/4 time and B-flat major. The first system contains measures 1-4, and the second system contains measures 5-8. Fingerings are indicated by numbers 2, 3, 4, 5, 6, 7, and 8 above the notes.

Measure 1: Treble clef has a half note B-flat. Bass clef has a half note B-flat.

Measure 2: Treble clef has quarter notes C and D. Bass clef has quarter notes C and D.

Measure 3: Treble clef has quarter notes E and F. Bass clef has quarter notes E and F.

Measure 4: Treble clef has a half note G. Bass clef has a half note G.

Measure 5: Treble clef has quarter notes A and B-flat. Bass clef has quarter notes A and B-flat.

Measure 6: Treble clef has quarter notes C and D. Bass clef has quarter notes C and D.

Measure 7: Treble clef has quarter notes E and F. Bass clef has quarter notes E and F.

Measure 8: Treble clef has a half note G. Bass clef has a half note G.

Example 8

Musical score for Example 8, measures 1-8. The score is in 4/4 time and D major. The first system contains measures 1-4, and the second system contains measures 5-8. Fingerings are indicated by numbers 2, 3, 4, 5, 6, 7, and 8 above the notes.

Measure 1: Treble clef has a half note D. Bass clef has a half note D.

Measure 2: Treble clef has quarter notes E and F. Bass clef has quarter notes E and F.

Measure 3: Treble clef has quarter notes G and A. Bass clef has quarter notes G and A.

Measure 4: Treble clef has quarter notes B and C. Bass clef has quarter notes B and C.

Measure 5: Treble clef has a half note D. Bass clef has a half note D.

Measure 6: Treble clef has quarter notes E and F. Bass clef has quarter notes E and F.

Measure 7: Treble clef has quarter notes G and A. Bass clef has quarter notes G and A.

Measure 8: Treble clef has a half note B. Bass clef has a half note B.

Example 9

Musical score for Example 9, measures 1-8. The score is in 4/4 time and B-flat major. It consists of two systems of two staves each (treble and bass clef). The first system contains measures 1-4, and the second system contains measures 5-8. Fingerings are indicated by numbers 2, 3, 4, and 5 above the notes.

Measure 1: Treble clef has a half note B-flat; Bass clef has a half note B-flat.

Measure 2: Treble clef has quarter notes C, D, E, F; Bass clef has quarter notes G, A, B, C.

Measure 3: Treble clef has quarter notes G, A, B, C; Bass clef has quarter notes D, E, F, G.

Measure 4: Treble clef has a half note D, F; Bass clef has a half note D, F.

Measure 5: Treble clef has a half note B-flat; Bass clef has a half note B-flat.

Measure 6: Treble clef has quarter notes C, D, E, F; Bass clef has quarter notes G, A, B, C.

Measure 7: Treble clef has quarter notes G, A, B, C; Bass clef has quarter notes D, E, F, G.

Measure 8: Treble clef has a half note D, F; Bass clef has a half note D, F.

Example 10

Musical score for Example 10, measures 1-8. The score is in 2/4 time and D major. It consists of two systems of two staves each (treble and bass clef). The first system contains measures 1-4, and the second system contains measures 5-8. Fingerings are indicated by numbers 2, 3, 4, and 5 above the notes.

Measure 1: Treble clef has a half note D; Bass clef has a half note D.

Measure 2: Treble clef has quarter notes E, F, G, A; Bass clef has quarter notes B, C, D, E.

Measure 3: Treble clef has quarter notes F, G, A, B; Bass clef has quarter notes C, D, E, F.

Measure 4: Treble clef has quarter notes G, A, B, C; Bass clef has quarter notes D, E, F, G.

Measure 5: Treble clef has a half note D, F; Bass clef has a half note D, F.

Measure 6: Treble clef has a half note D; Bass clef has a half note D.

Measure 7: Treble clef has quarter notes E, F, G, A; Bass clef has quarter notes B, C, D, E.

Measure 8: Treble clef has quarter notes G, A, B, C; Bass clef has quarter notes D, E, F, G.

Workbook Check Sheet

Name _____ Check # _____

Grade	Completion	Comprehension
A	All examples are complete.	Student shows clear understanding of all concepts.
B	Most examples are complete.	Student shows clear understanding of all concepts with occasional minor errors.
C	About half the examples are complete.	Student is struggling with some major concepts.
D	Less than half the examples are complete.	Student shows very little understanding of major concepts.
F	Almost no examples have been completed.	No comprehension is evident.

Grade _____

Comments:

Example 11

Musical score for Example 11, measures 1-8. The score is in 3/4 time and consists of two systems of two staves each (treble and bass clef). The first system contains measures 1-4, and the second system contains measures 5-8. Fingerings are indicated by numbers 2, 3, 4, 5, 6, 7, and 8 above the notes. Measure 6 features a whole rest in both staves.

Example 12

Musical score for Example 12, measures 1-8. The score is in 2/4 time and consists of two systems of two staves each (treble and bass clef). The first system contains measures 1-4, and the second system contains measures 5-8. Fingerings are indicated by numbers 2, 3, 4, 5, 6, 7, and 8 above the notes. Measure 8 features a whole rest in both staves.

Example 13

Musical score for Example 13, measures 1-8. The score is in 4/4 time, key of D major (one sharp). The first system contains measures 1-4, and the second system contains measures 5-8. Fingerings are indicated by numbers 1-4 above notes in the first system and 5-8 above notes in the second system.

Measure 1: Treble clef: quarter note D4, quarter note E4, quarter rest. Bass clef: quarter note D3, quarter note E3, quarter rest.

Measure 2: Treble clef: quarter note F#4, quarter note G4, quarter note A4, quarter note B4. Bass clef: quarter note F#3, quarter note G3, quarter note A3, quarter note B3.

Measure 3: Treble clef: quarter note C5, quarter note B4, quarter note A4, quarter note G4. Bass clef: quarter note C4, quarter note B3, quarter note A3, quarter note G3.

Measure 4: Treble clef: quarter note F#4, quarter note G4, quarter note A4, quarter note B4. Bass clef: quarter note F#3, quarter note G3, quarter note A3, quarter note B3.

Measure 5: Treble clef: quarter rest, quarter note D4, quarter note E4, quarter note F#4. Bass clef: quarter rest, quarter note D3, quarter note E3, quarter note F#3.

Measure 6: Treble clef: quarter note G4, quarter note A4, quarter note B4, quarter note C5. Bass clef: quarter note G3, quarter note A3, quarter note B3, quarter note C4.

Measure 7: Treble clef: quarter note B4, quarter note A4, quarter note G4, quarter note F#4. Bass clef: quarter note B3, quarter note A3, quarter note G3, quarter note F#3.

Measure 8: Treble clef: quarter note E4, quarter note D4, quarter note C4, quarter note B3. Bass clef: quarter note E3, quarter note D3, quarter note C3, quarter note B2.

Example 14

Musical score for Example 14, measures 1-8. The score is in 4/4 time, key of B minor (two flats). The first system contains measures 1-4, and the second system contains measures 5-8. Fingerings are indicated by numbers 1-4 above notes in the first system and 5-8 above notes in the second system.

Measure 1: Treble clef: quarter note B3, quarter note C4, quarter note D4, quarter note E4. Bass clef: quarter note B2, quarter note C3, quarter note D3, quarter note E3.

Measure 2: Treble clef: quarter note F4, quarter note G4, quarter note A4, quarter note B4. Bass clef: quarter note F3, quarter note G3, quarter note A3, quarter note B3.

Measure 3: Treble clef: quarter note C5, quarter note B4, quarter note A4, quarter note G4. Bass clef: quarter note C4, quarter note B3, quarter note A3, quarter note G3.

Measure 4: Treble clef: quarter note F4, quarter note G4, quarter note A4, quarter note B4. Bass clef: quarter note F3, quarter note G3, quarter note A3, quarter note B3.

Measure 5: Treble clef: quarter note B4, quarter note A4, quarter note G4, quarter note F4. Bass clef: quarter note B3, quarter note A3, quarter note G3, quarter note F3.

Measure 6: Treble clef: quarter note E4, quarter note D4, quarter note C4, quarter note B3. Bass clef: quarter note E3, quarter note D3, quarter note C3, quarter note B2.

Measure 7: Treble clef: quarter note A4, quarter note G4, quarter note F4, quarter note E4. Bass clef: quarter note A3, quarter note G3, quarter note F3, quarter note E3.

Measure 8: Treble clef: quarter note D4, quarter note C4, quarter note B3, quarter note A3. Bass clef: quarter note D3, quarter note C3, quarter note B2, quarter note A2.

Example 15

Musical score for Example 15, measures 1-8. The score is in 3/4 time, key of D major (two sharps), and consists of two systems. Each system has a treble and bass staff. Fingerings are indicated by numbers 1-5 above notes.

System 1 (Measures 1-4):
Measure 1: Treble (D4 quarter, E4 quarter, F#4 quarter), Bass (D3 quarter, E3 quarter, F#3 quarter).
Measure 2: Treble (G4 quarter, F#4 quarter, E4 quarter), Bass (G3 quarter, F#3 quarter, E3 quarter).
Measure 3: Treble (D4 quarter, E4 quarter, F#4 quarter), Bass (D3 quarter, E3 quarter, F#3 quarter).
Measure 4: Treble (G4 quarter, F#4 quarter, E4 quarter), Bass (G3 quarter, F#3 quarter, E3 quarter).

System 2 (Measures 5-8):
Measure 5: Treble (D4 quarter, E4 quarter, F#4 quarter), Bass (D3 quarter, E3 quarter, F#3 quarter).
Measure 6: Treble (G4 quarter, F#4 quarter, E4 quarter), Bass (G3 quarter, F#3 quarter, E3 quarter).
Measure 7: Treble (D4 quarter, E4 quarter, F#4 quarter), Bass (D3 quarter, E3 quarter, F#3 quarter).
Measure 8: Treble (G4 quarter, F#4 quarter, E4 quarter), Bass (G3 quarter, F#3 quarter, E3 quarter).

Example 16

Musical score for Example 16, measures 1-8. The score is in 4/4 time, key of D major (two sharps), and consists of two systems. Each system has a treble and bass staff. Fingerings are indicated by numbers 1-5 above notes.

System 1 (Measures 1-4):
Measure 1: Treble (D4 quarter, E4 quarter, F#4 quarter, G4 quarter), Bass (D3 quarter, E3 quarter, F#3 quarter, G3 quarter).
Measure 2: Treble (A4 quarter, G4 quarter, F#4 quarter, E4 quarter), Bass (A3 quarter, G3 quarter, F#3 quarter, E3 quarter).
Measure 3: Treble (D4 quarter, E4 quarter, F#4 quarter, G4 quarter), Bass (D3 quarter, E3 quarter, F#3 quarter, G3 quarter).
Measure 4: Treble (A4 quarter, G4 quarter, F#4 quarter, E4 quarter), Bass (A3 quarter, G3 quarter, F#3 quarter, E3 quarter).

System 2 (Measures 5-8):
Measure 5: Treble (D4 quarter, E4 quarter, F#4 quarter, G4 quarter), Bass (D3 quarter, E3 quarter, F#3 quarter, G3 quarter).
Measure 6: Treble (A4 quarter, G4 quarter, F#4 quarter, E4 quarter), Bass (A3 quarter, G3 quarter, F#3 quarter, E3 quarter).
Measure 7: Treble (D4 quarter, E4 quarter, F#4 quarter, G4 quarter), Bass (D3 quarter, E3 quarter, F#3 quarter, G3 quarter).
Measure 8: Treble (A4 quarter, G4 quarter, F#4 quarter, E4 quarter), Bass (A3 quarter, G3 quarter, F#3 quarter, E3 quarter).

Example 17

Example 17 is a musical score in 3/4 time, featuring two systems of treble and bass staves. The key signature has one flat (B-flat). The first system consists of two measures. The first measure contains a half note G4 in the treble and a half note G3 in the bass. The second measure contains a quarter rest in the treble and a quarter rest in the bass. The second system consists of four measures. The first measure contains a quarter note G4 in the treble and a quarter note G3 in the bass. The second measure contains a quarter note A4 in the treble and a quarter note A3 in the bass. The third measure contains a quarter note B4 in the treble and a quarter note B3 in the bass. The fourth measure contains a quarter note C5 in the treble and a quarter note C4 in the bass. Fingering numbers 2, 3, and 4 are indicated above the notes in the first system, and 5, 6, 7, and 8 are indicated above the notes in the second system.

Example 18

Example 18 is a musical score in 2/4 time, featuring two systems of treble and bass staves. The key signature has one sharp (F-sharp). The first system consists of two measures. The first measure contains a half note F#4 in the treble and a half note F#3 in the bass. The second measure contains a quarter rest in the treble and a quarter rest in the bass. The second system consists of four measures. The first measure contains a quarter note F#4 in the treble and a quarter note F#3 in the bass. The second measure contains a quarter note G#4 in the treble and a quarter note G#3 in the bass. The third measure contains a quarter note A#4 in the treble and a quarter note A#3 in the bass. The fourth measure contains a quarter note B4 in the treble and a quarter note B3 in the bass. Fingering numbers 2, 3, and 4 are indicated above the notes in the first system, and 5, 6, 7, and 8 are indicated above the notes in the second system.

Example 19

Musical score for Example 19, measures 1-8. The score is in 3/4 time, key of B-flat major (two flats). The melody is written in the treble clef, and the bass line is in the bass clef. The melody consists of quarter notes and eighth notes, with fingerings 2, 3, and 4 indicated above the notes. The bass line consists of quarter notes and eighth notes, with fingerings 2, 3, and 4 indicated above the notes. The piece concludes with a double bar line at the end of measure 8.

Example 20

Musical score for Example 20, measures 1-8. The score is in 4/4 time, key of D major (two sharps). The melody is written in the treble clef, and the bass line is in the bass clef. The melody consists of quarter notes and eighth notes, with fingerings 2, 3, and 4 indicated above the notes. The bass line consists of quarter notes and eighth notes, with fingerings 2, 3, and 4 indicated above the notes. The piece concludes with a double bar line at the end of measure 8.

Workbook Check Sheet

Name _____ Check # _____

Grade	Completion	Comprehension
A	All examples are complete.	Student shows clear understanding of all concepts.
B	Most examples are complete.	Student shows clear understanding of all concepts with occasional minor errors.
C	About half the examples are complete.	Student is struggling with some major concepts.
D	Less than half the examples are complete.	Student shows very little understanding of major concepts.
F	Almost no examples have been completed.	No comprehension is evident.

Grade _____

Comments:

Two Part Reading Three

20 Exercises

Musical notation for exercise 3, consisting of two staves in 4/4 time, key of B-flat major. The notation includes fingerings 1-4 and 5-8.

The first staff (treble clef) contains measures 1-4. Measure 1: C4, D4, E4, F4. Measure 2: G4, A4, B4, C5. Measure 3: B4, A4, G4, F4. Measure 4: E4, D4, C4.

The second staff (bass clef) contains measures 1-4. Measure 1: C3, B2, A2, G2. Measure 2: F2, E2, D2, C2. Measure 3: B1, A1, G1, F1. Measure 4: E1, D1, C1.

The third staff (treble clef) contains measures 5-8. Measure 5: G4, A4, B4, C5. Measure 6: B4, A4, G4, F4. Measure 7: E4, D4, C4. Measure 8: B3, A3, G3, F3.

The fourth staff (bass clef) contains measures 5-8. Measure 5: G2, F2, E2, D2. Measure 6: C2, B1, A1, G1. Measure 7: F1, E1, D1, C1. Measure 8: B0, A0, G0, F0.

In Two Part Reading Level Three we will demonstrate a mastery of all the skills we have learned so far:

- Stepwise Motion - the only leap will be from Sol to Do
- Quarter Notes, Half Notes, Dotted Half Notes, Whole Notes
- 4/4, 3/4, and 2/4 time
- Quarter Rests, Whole Rests and Half Rests
- C Major, F Major, G Major, Bb Major and D Major
- Voices will start on a pitch from the tonic chord.
- Voices may have different rhythms.
- Pairs of Eighth Notes

Example 1

Musical score for Example 1, measures 1-9. The score is written in 3/4 time and consists of two systems of two staves each (treble and bass clef). The key signature is one flat (B-flat). The notes are as follows:

Measure	Treble Clef	Bass Clef
1	C4	C3
2	D4	D3
3	E4	E3
4	F4	F3
5	G4	G3
6	A4	A3
7	B4	B3
8	C5	C4
9	B4	B3

Example 2

Musical score for Example 2, measures 1-8. The score is written in 4/4 time and consists of two systems of two staves each (treble and bass clef). The key signature is two flats (B-flat and E-flat). The notes are as follows:

Measure	Treble Clef	Bass Clef
1	F4	F3
2	G4	G3
3	A4	A3
4	B4	B3
5	C5	C4
6	B4	B3
7	A4	A3
8	G4	G3

Example 3

Example 3 is a musical score in 4/4 time, key of D major. It consists of two systems of two staves each (treble and bass clef). The first system contains measures 1 through 4, and the second system contains measures 5 through 8. Fingerings are indicated by numbers 2, 3, 4, 5, 6, 7, and 8 above or below notes.

Measure 1: Treble clef has a quarter note D4, a quarter note E4, and a half note F#4. Bass clef has a quarter note D3, a quarter note E3, and a half note F#3.

Measure 2: Treble clef has a quarter note G4, a quarter note A4, and a half note B4. Bass clef has a quarter note G3, a quarter note A3, and a half note B3.

Measure 3: Treble clef has a quarter note C5, a quarter note B4, and a half note A4. Bass clef has a quarter note C4, a quarter note B3, and a half note A3.

Measure 4: Treble clef has a quarter note G4, a quarter note F#4, and a half note E4. Bass clef has a quarter note G3, a quarter note F#3, and a half note E3.

Measure 5: Treble clef has a quarter note D4, a quarter note E4, and a half note F#4. Bass clef has a quarter note D3, a quarter note E3, and a half note F#3.

Measure 6: Treble clef has a quarter note G4, a quarter note A4, and a half note B4. Bass clef has a quarter note G3, a quarter note A3, and a half note B3.

Measure 7: Treble clef has a quarter note C5, a quarter note B4, and a half note A4. Bass clef has a quarter note C4, a quarter note B3, and a half note A3.

Measure 8: Treble clef has a quarter note G4, a quarter note F#4, and a half note E4. Bass clef has a quarter note G3, a quarter note F#3, and a half note E3.

Example 4

Example 4 is a musical score in 4/4 time, key of B-flat major. It consists of two systems of two staves each (treble and bass clef). The first system contains measures 1 through 4, and the second system contains measures 5 through 8. Fingerings are indicated by numbers 2, 3, 4, 5, 6, 7, and 8 above or below notes.

Measure 1: Treble clef has a quarter note Bb4, a quarter note C5, and a half note D5. Bass clef has a quarter note Bb3, a quarter note C4, and a half note D4.

Measure 2: Treble clef has a quarter note Eb5, a quarter note D5, and a half note C5. Bass clef has a quarter note Eb4, a quarter note D4, and a half note C4.

Measure 3: Treble clef has a quarter note Bb4, a quarter note A4, and a half note G4. Bass clef has a quarter note Bb3, a quarter note A3, and a half note G3.

Measure 4: Treble clef has a quarter note F#4, a quarter note G4, and a half note E4. Bass clef has a quarter note F#3, a quarter note G3, and a half note E3.

Measure 5: Treble clef has a quarter note Bb4, a quarter note C5, and a half note D5. Bass clef has a quarter note Bb3, a quarter note C4, and a half note D4.

Measure 6: Treble clef has a quarter note Eb5, a quarter note D5, and a half note C5. Bass clef has a quarter note Eb4, a quarter note D4, and a half note C4.

Measure 7: Treble clef has a quarter note Bb4, a quarter note A4, and a half note G4. Bass clef has a quarter note Bb3, a quarter note A3, and a half note G3.

Measure 8: Treble clef has a quarter note F#4, a quarter note G4, and a half note E4. Bass clef has a quarter note F#3, a quarter note G3, and a half note E3.

Example 5

Example 5 is a musical exercise in 2/4 time with a key signature of one sharp (F#). It consists of two systems of two staves each (treble and bass). The first system starts with a whole rest in the treble staff and a quarter rest in the bass staff. The second system begins with a quarter rest in the treble staff and a quarter rest in the bass staff. The piece concludes with a double bar line. Fingerings are indicated by numbers 2, 3, 4, 5, 6, 7, and 8 above the notes.

Example 6

Example 6 is a musical exercise in 4/4 time with a key signature of one sharp (F#). It consists of two systems of two staves each (treble and bass). The first system starts with a quarter rest in the treble staff and a quarter rest in the bass staff. The second system begins with a quarter rest in the treble staff and a quarter rest in the bass staff. The piece concludes with a double bar line. Fingerings are indicated by numbers 2, 3, 4, 5, 6, 7, and 8 above the notes.

Example 7

Musical score for Example 7, measures 1-8. The score is in 2/4 time and B-flat major. The first system contains measures 1-4, and the second system contains measures 5-8. Fingerings are indicated by numbers 2, 3, 4, 5, 6, 7, and 8 above or below notes.

Measure 1: Treble clef has a whole note B-flat; Bass clef has a whole note B-flat.

Measure 2: Treble clef has a quarter rest followed by a quarter note C; Bass clef has a quarter rest followed by a quarter note C.

Measure 3: Treble clef has a quarter rest followed by a quarter note D; Bass clef has a quarter rest followed by a quarter note D.

Measure 4: Treble clef has a quarter note E followed by a quarter note F; Bass clef has a quarter note E followed by a quarter note F.

Measure 5: Treble clef has a quarter note G followed by a quarter note A; Bass clef has a quarter note G followed by a quarter note A.

Measure 6: Treble clef has a quarter note B-flat followed by a quarter note C; Bass clef has a quarter note B-flat followed by a quarter note C.

Measure 7: Treble clef has a quarter note D followed by a quarter note E; Bass clef has a quarter note D followed by a quarter note E.

Measure 8: Treble clef has a quarter note F followed by a quarter note G; Bass clef has a quarter note F followed by a quarter note G.

Example 8

Musical score for Example 8, measures 1-8. The score is in 3/4 time and D major. The first system contains measures 1-4, and the second system contains measures 5-8. Fingerings are indicated by numbers 2, 3, 4, 5, 6, 7, and 8 above or below notes.

Measure 1: Treble clef has a whole note D; Bass clef has a whole note D.

Measure 2: Treble clef has a quarter note E followed by a quarter note F; Bass clef has a quarter note E followed by a quarter note F.

Measure 3: Treble clef has a quarter note G followed by a quarter note A; Bass clef has a quarter note G followed by a quarter note A.

Measure 4: Treble clef has a quarter note B followed by a quarter note C; Bass clef has a quarter note B followed by a quarter note C.

Measure 5: Treble clef has a quarter note D followed by a quarter note E; Bass clef has a quarter note D followed by a quarter note E.

Measure 6: Treble clef has a quarter note F followed by a quarter note G; Bass clef has a quarter note F followed by a quarter note G.

Measure 7: Treble clef has a quarter note A followed by a quarter note B; Bass clef has a quarter note A followed by a quarter note B.

Measure 8: Treble clef has a quarter note C followed by a quarter note D; Bass clef has a quarter note C followed by a quarter note D.

Example 9

Musical score for Example 9, measures 1-8. The score is in 4/4 time and B-flat major. The first system contains measures 1-4, and the second system contains measures 5-8. Fingerings are indicated by numbers 1-5 above notes.

Measure 1: Treble clef has a half note B-flat. Bass clef has a half note B-flat.

Measure 2: Treble clef has quarter notes C, D, E, F. Bass clef has quarter notes G, A, B-flat, C.

Measure 3: Treble clef has a quarter rest followed by quarter notes G, A. Bass clef has quarter notes B-flat, C, D, E.

Measure 4: Treble clef has a half note G. Bass clef has quarter notes F, G, A, B-flat.

Measure 5: Treble clef has quarter notes C, D, E, F. Bass clef has quarter notes G, A, B-flat, C.

Measure 6: Treble clef has quarter notes G, A, B-flat, C. Bass clef has quarter notes D, E, F, G.

Measure 7: Treble clef has quarter notes D, E, F, G. Bass clef has quarter notes A, B-flat, C, D.

Measure 8: Treble clef has a half note G. Bass clef has a half note B-flat.

Example 10

Musical score for Example 10, measures 1-8. The score is in 4/4 time and D major. The first system contains measures 1-4, and the second system contains measures 5-8. Fingerings are indicated by numbers 1-5 above notes.

Measure 1: Treble clef has a half note D. Bass clef has a half note D.

Measure 2: Treble clef has quarter notes E, F, G, A. Bass clef has quarter notes B, C, D, E.

Measure 3: Treble clef has quarter notes B, C, D, E. Bass clef has quarter notes F, G, A, B.

Measure 4: Treble clef has quarter notes F, G, A, B. Bass clef has quarter notes C, D, E, F.

Measure 5: Treble clef has a quarter note D, a quarter rest, a quarter note F, and a quarter rest. Bass clef has a half note D.

Measure 6: Treble clef has a half note G. Bass clef has quarter notes E, F, G, A.

Measure 7: Treble clef has a half note A. Bass clef has quarter notes B, C, D, E.

Measure 8: Treble clef has a half note B. Bass clef has a half note D.

Workbook Check Sheet

Name _____ Check # _____

Grade	Completion	Comprehension
A	All examples are complete.	Student shows clear understanding of all concepts.
B	Most examples are complete.	Student shows clear understanding of all concepts with occasional minor errors.
C	About half the examples are complete.	Student is struggling with some major concepts.
D	Less than half the examples are complete.	Student shows very little understanding of major concepts.
F	Almost no examples have been completed.	No comprehension is evident.

Grade _____

Comments:

Example 11

Example 11 is a musical exercise in 4/4 time, consisting of two systems of four staves each. The first system includes a treble staff and a bass staff. The second system also includes a treble staff and a bass staff. The music is written in a key with one flat (B-flat). The first system shows a sequence of notes with fingerings 2, 3, and 4. The second system shows a sequence of notes with fingerings 5, 6, 7, and 8. The piece concludes with a double bar line.

Example 12

Example 12 is a musical exercise in 2/4 time, consisting of two systems of four staves each. The first system includes a treble staff and a bass staff. The second system also includes a treble staff and a bass staff. The music is written in a key with one flat (B-flat). The first system shows a sequence of notes with fingerings 2, 3, and 4. The second system shows a sequence of notes with fingerings 5, 6, 7, and 8. The piece concludes with a double bar line.

Example 13

Musical score for Example 13, measures 1-8. The score is in 3/4 time, key of D major (one sharp), and consists of two systems of two staves each (treble and bass clef). The first system contains measures 1-4, and the second system contains measures 5-8. Fingerings are indicated by numbers 1-4 above notes in the first system and 5-8 above notes in the second system.

Measure 1: Treble clef has a quarter note D4, quarter note E4, and a half note F#4. Bass clef has a dotted half note D3.

Measure 2: Treble clef has quarter notes G4, A4, B4, and C5. Bass clef has quarter notes D4, E4, and F#4.

Measure 3: Treble clef has quarter notes D5, C5, B4, and A4. Bass clef has quarter notes G4, F#4, E4, and D4.

Measure 4: Treble clef has a quarter rest, quarter note D4, and a half note E4. Bass clef has a dotted half note D3.

Measure 5: Treble clef has quarter notes D4, E4, and a half note F#4. Bass clef has a dotted half note D3.

Measure 6: Treble clef has quarter notes G4, A4, and a half note B4. Bass clef has quarter notes D4, E4, and F#4.

Measure 7: Treble clef has a quarter note C5, quarter note B4, and a half note A4. Bass clef has quarter notes G4, F#4, E4, and D4.

Measure 8: Treble clef has a quarter note G4, quarter note F#4, and a half note E4. Bass clef has a dotted half note D3.

Example 14

Musical score for Example 14, measures 1-8. The score is in 4/4 time, key of B-flat major (two flats), and consists of two systems of two staves each (treble and bass clef). The first system contains measures 1-4, and the second system contains measures 5-8. Fingerings are indicated by numbers 1-4 above notes in the first system and 5-8 above notes in the second system.

Measure 1: Treble clef has a quarter note Bb4, quarter note C5, quarter note D5, and a half note C5. Bass clef has a dotted half note Bb3.

Measure 2: Treble clef has quarter notes D5, E5, F#5, G5, and A5. Bass clef has quarter notes Bb3, C4, D4, and E4.

Measure 3: Treble clef has quarter notes Bb5, A5, G5, and F#5. Bass clef has quarter notes F#4, E4, D4, and C4.

Measure 4: Treble clef has a quarter note G5, quarter note F#5, and a half note E5. Bass clef has a dotted half note Bb3.

Measure 5: Treble clef has quarter notes D5, E5, and a half note F#5. Bass clef has a dotted half note Bb3.

Measure 6: Treble clef has quarter notes G5, A5, and a half note Bb5. Bass clef has quarter notes D4, E4, and F#4.

Measure 7: Treble clef has a quarter note C6, quarter note B5, and a half note A5. Bass clef has quarter notes G4, F#4, E4, and D4.

Measure 8: Treble clef has a quarter note G5, quarter note F#5, and a half note E5. Bass clef has a dotted half note Bb3.

Example 15

Musical score for Example 15, measures 1-8. The score is in 4/4 time and D major. It consists of two systems of two staves each (treble and bass clef). The first system contains measures 1-4, and the second system contains measures 5-8. Fingerings are indicated by numbers 1-5 above or below notes.

Measure 1: Treble clef has a quarter note D4, an eighth note E4, an eighth note F4, and a quarter note G4. Bass clef has a quarter note G2, an eighth note F2, an eighth note E2, and a quarter note D2.

Measure 2: Treble clef has a quarter note A4, a quarter note B4, and a quarter note C5. Bass clef has a quarter note C3, an eighth note B2, an eighth note A2, and a quarter note G2.

Measure 3: Treble clef has a quarter note D5, a quarter note C5, and a quarter note B4. Bass clef has a quarter note F2, an eighth note E2, an eighth note D2, and a quarter note C2.

Measure 4: Treble clef has a quarter note A4, a quarter note G4, and a quarter note F4. Bass clef has a quarter note B2, an eighth note A2, an eighth note G2, and a quarter note F2.

Measure 5: Treble clef has a quarter note E4, a quarter note D4, and a quarter note C4. Bass clef has a quarter note E2, an eighth note D2, an eighth note C2, and a quarter note B1.

Measure 6: Treble clef has a quarter note B3, a quarter note A3, and a quarter note G3. Bass clef has a quarter note A1, an eighth note G1, an eighth note F1, and a quarter note E1.

Measure 7: Treble clef has a quarter note F4, a quarter note E4, and a quarter note D4. Bass clef has a quarter note D2, an eighth note C2, an eighth note B1, and a quarter note A1.

Measure 8: Treble clef has a quarter note C5, a quarter note B4, and a quarter note A4. Bass clef has a quarter note G1, an eighth note F1, an eighth note E1, and a quarter note D1.

Example 16

Musical score for Example 16, measures 1-8. The score is in 2/4 time and D major. It consists of two systems of two staves each (treble and bass clef). The first system contains measures 1-4, and the second system contains measures 5-8. Fingerings are indicated by numbers 1-5 above or below notes.

Measure 1: Treble clef has a quarter note D4, an eighth note E4, and an eighth note F4. Bass clef has a quarter note G2, an eighth note F2, and an eighth note E2.

Measure 2: Treble clef has a quarter note A4, a quarter note B4, and a quarter note C5. Bass clef has a quarter note C3, an eighth note B2, and an eighth note A2.

Measure 3: Treble clef has a quarter note D5, a quarter note C5, and a quarter note B4. Bass clef has a quarter note F2, an eighth note E2, and an eighth note D2.

Measure 4: Treble clef has a quarter note A4, a quarter note G4, and a quarter note F4. Bass clef has a quarter note B2, an eighth note A2, and an eighth note G2.

Measure 5: Treble clef has a quarter note E4, a quarter note D4, and a quarter note C4. Bass clef has a quarter note E2, an eighth note D2, and an eighth note C2.

Measure 6: Treble clef has a quarter note B3, a quarter note A3, and a quarter note G3. Bass clef has a quarter note A1, an eighth note G1, and an eighth note F1.

Measure 7: Treble clef has a quarter note F4, a quarter note E4, and a quarter note D4. Bass clef has a quarter note D2, an eighth note C2, and an eighth note B1.

Measure 8: Treble clef has a quarter note C5, a quarter note B4, and a quarter note A4. Bass clef has a quarter note G1, an eighth note F1, and an eighth note E1.

Example 17

Example 17 is a musical exercise in 4/4 time with a key signature of one flat (B-flat). It consists of two systems of two staves each (treble and bass). The first system contains measures 1 through 4. Measure 1 has a whole rest in both staves. Measure 2 features a quarter-note triplet in the bass staff (F4, G4, A4) and a quarter note in the treble staff (F4). Measure 3 features a quarter-note triplet in the treble staff (A4, B4, C5) and a quarter note in the bass staff (F4). Measure 4 features a quarter note in the treble staff (B4) and a quarter note in the bass staff (F4). The second system contains measures 5 through 8. Measure 5 features a quarter note in the treble staff (A4) and a quarter note in the bass staff (F4). Measure 6 features a quarter note in the treble staff (B4) and a quarter note in the bass staff (F4). Measure 7 features a quarter-note triplet in the treble staff (A4, B4, C5) and a quarter note in the bass staff (F4). Measure 8 features a quarter note in the treble staff (F4) and a quarter note in the bass staff (F4). The piece concludes with a double bar line.

Example 18

Example 18 is a musical exercise in 4/4 time with a key signature of one sharp (F#). It consists of two systems of two staves each (treble and bass). The first system contains measures 1 through 4. Measure 1 has a whole note in the treble staff (F#4) and a whole note in the bass staff (F#3). Measure 2 features a quarter note in the treble staff (F#4) and a quarter note in the bass staff (F#3). Measure 3 features a quarter-note triplet in the treble staff (F#4, G#4, A4) and a quarter note in the bass staff (F#3). Measure 4 features a quarter note in the treble staff (A4) and a quarter note in the bass staff (F#3). The second system contains measures 5 through 8. Measure 5 features a quarter note in the treble staff (A4) and a quarter note in the bass staff (F#3). Measure 6 features a quarter note in the treble staff (B4) and a quarter note in the bass staff (F#3). Measure 7 features a quarter note in the treble staff (C5) and a quarter note in the bass staff (F#3). Measure 8 features a quarter note in the treble staff (F#4) and a quarter note in the bass staff (F#3). The piece concludes with a double bar line.

Example 19

Musical score for Example 19, measures 1-8. The score is in 3/4 time, key of B-flat major (two flats). The first system contains measures 1-4, and the second system contains measures 5-8. The melody is in the treble clef, and the bass line is in the bass clef. Fingerings are indicated by numbers 1-5 above the notes.

Measures 1-4:
T1: C4, D4, E4, F4, G4, A4, Bb4, A4, G4, F4, E4, D4, C4
B1: G2, F2, E2, D2, C2, B1, A1, G1, F1, E1, D1, C1, B0

Measures 5-8:
T1: C4, D4, E4, F4, G4, A4, Bb4, A4, G4, F4, E4, D4, C4
B1: G2, F2, E2, D2, C2, B1, A1, G1, F1, E1, D1, C1, B0

Example 20

Musical score for Example 20, measures 1-8. The score is in 4/4 time, key of D major (two sharps). The first system contains measures 1-4, and the second system contains measures 5-8. The melody is in the treble clef, and the bass line is in the bass clef. Fingerings are indicated by numbers 1-5 above the notes.

Measures 1-4:
T1: D4, E4, F#4, G4, A4, B4, C5, B4, A4, G4, F#4, E4, D4
B1: D3, C3, B2, A2, G2, F#2, E2, D2, C2, B1, A1, G1, F#1, E1, D1

Measures 5-8:
T1: D4, E4, F#4, G4, A4, B4, C5, B4, A4, G4, F#4, E4, D4
B1: D3, C3, B2, A2, G2, F#2, E2, D2, C2, B1, A1, G1, F#1, E1, D1

Workbook Check Sheet

Name _____ Check # _____

Grade	Completion	Comprehension
A	All examples are complete.	Student shows clear understanding of all concepts.
B	Most examples are complete.	Student shows clear understanding of all concepts with occasional minor errors.
C	About half the examples are complete.	Student is struggling with some major concepts.
D	Less than half the examples are complete.	Student shows very little understanding of major concepts.
F	Almost no examples have been completed.	No comprehension is evident.

Grade _____

Comments:

Level Three Glossary

Alto the lowest female singing voice

Bar Lines vertical lines in the music which separate it into measures.

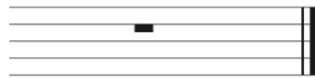


Bass lowest male singing voice

Common Time 4/4 meter



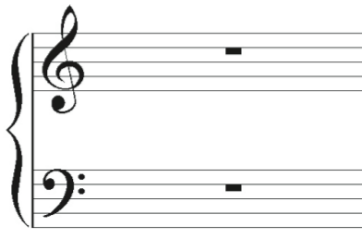
Double Bar indicates end of a piece of music



Flat lowers a note a half step

b

Grand Staff the treble and bass clef combined



Interval the distance between two pitches

Key Signature sharps or flats written at the beginning of a staff line to indicate which pitches are to be raised or lowered from their natural state.



Measure the space between two bar lines

Mixed Voices written for soprano, alto, tenor and bass

Octave An interval of 8 steps on a scale; , for example from C to C, or from D to D.



Soprano the highest female singing voice

Staff the 5 horizontal lines upon which music is written; usually including a clef, a time signature, and a key signature



Tempo the speed of the music

Tenor the highest male singing voice

Time Signature the numbers written on the staff indicating which type of note gets the beat and how many beats are in a measure



Tutti everyone play or sing

Unison everyone on the same pitch